

PINCH Antibody

Catalog No: #48476

Package Size: #48476-1 50ul #48476-2 100ul

Orders: order@signalwayantibody.comSupport: tech@signalwayantibody.com

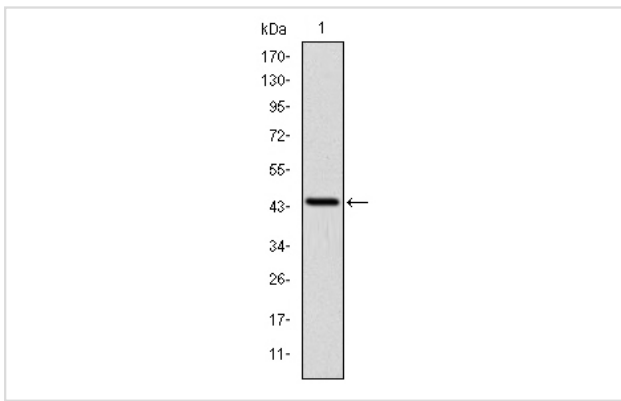
Description

Product Name	PINCH Antibody
Host Species	Mouse
Clonality	Monoclonal
Clone No.	B9-G7
Purification	ProA affinity purified
Applications	WB,ICC,FC
Species Reactivity	Hu
Immunogen Description	Recombinant protein
Other Names	2310016J22Rik antibody 4921524A02Rik antibody AI507642 antibody AU021743 antibody AW551584 antibody C430041B13Rik antibody LIM and senescent cell antigen like domains 1 antibody LIM and senescent cell antigen-like-containing domain protein 1 antibody LIM zinc finger domain containing 1 antibody LIM-type zinc finger domains 1 antibody Lims1 antibody LIMS1_HUMAN antibody Lims1 antibody Particularly interesting new Cys His protein 1 antibody Particularly interesting new Cys His protein antibody Particularly interesting new Cys-His protein 1 antibody PINCH 1 antibody PINCH antibody PINCH-1 antibody PINCH1 antibody Renal carcinoma antigen NY REN 48 antibody Renal carcinoma antigen NY-REN-48 antibody senescent cell antigen antibody wu:fc32c03 antibody zgc:112533 antibody
Accession No.	Swiss-Prot#:P48059
Uniprot	P48059
GeneID	3987;
Calculated MW	37 kDa
Formulation	1*TBS (pH7.4), 1%BSA, Preservative: 0.05% Sodium Azide.
Storage	Store at -20°C

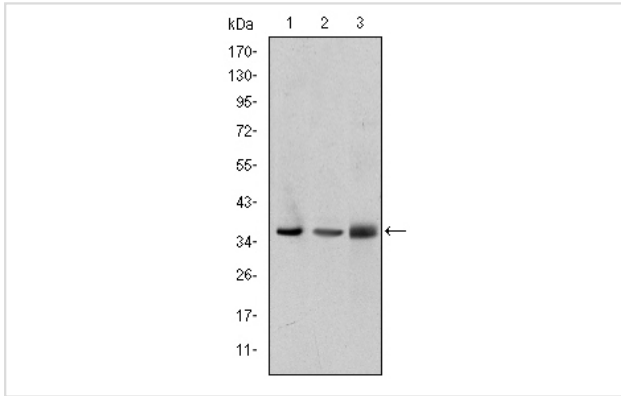
Application Details

WB: 1:500-1:1,000 ICC: 1:100-1:500 FC: 1:100-1:200

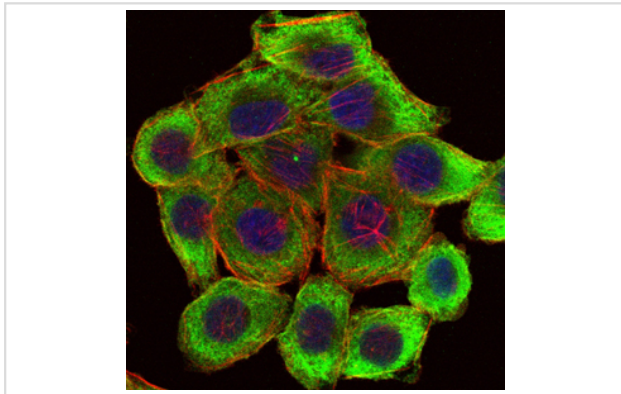
Images



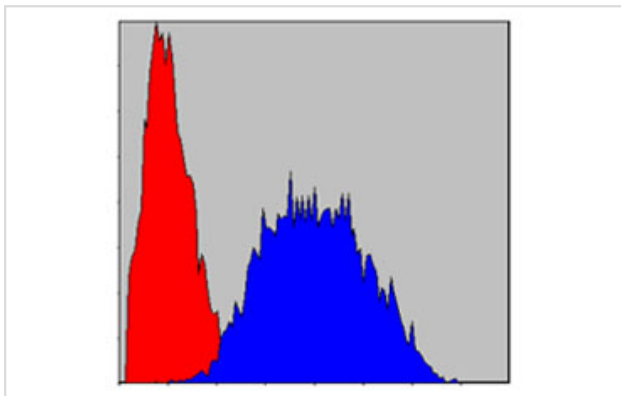
Western blot analysis of PINCH on human PINCH recombinant protein using anti-PINCH antibody at 1/1,000 dilution.



Western blot analysis of PINCH on different cell lysates using anti-PINCH antibody at 1/1,000 dilution. Positive control: Lane 1: A549 Lane 2: Jurkat Lane 3: Hela



ICC staining PINCH (green) and actin filaments (red) in HepG2 cells. The nuclear counter stain is DAPI (blue). Cells were fixed in paraformaldehyde, permeabilised with 0.25% Triton X100/PBS.



Flow cytometric analysis of HeLa cells with PINCH antibody at 1/100 dilution (blue) compared with an unlabelled control (cells without incubation with primary antibody; red).

Background

Pinch, also designated particularly interesting new Cys-His protein or NY-REN-48, is a focal adhesion protein that is a component of the ILK-PINCH complex. This complex is a major part of the growth factor and integrin signaling pathway. Pinch is involved in cell differentiation, proliferation and survival by acting as an effector of integrin and growth factor signaling. It is a cytoplasmic protein expressed in most tissues and consists of five LIM domains, a nuclear localization signal and a nuclear export signal. The PINCH-1/ILK complex is regulated by a PINCH-1 related protein PINCH-2, which also forms a complex with ILK.

References

Note: This product is for in vitro research use only