

GCNF Antibody

Catalog No: #48479

Package Size: #48479-1 50ul #48479-2 100ul

Orders: order@signalwayantibody.com

Support: tech@signalwayantibody.com

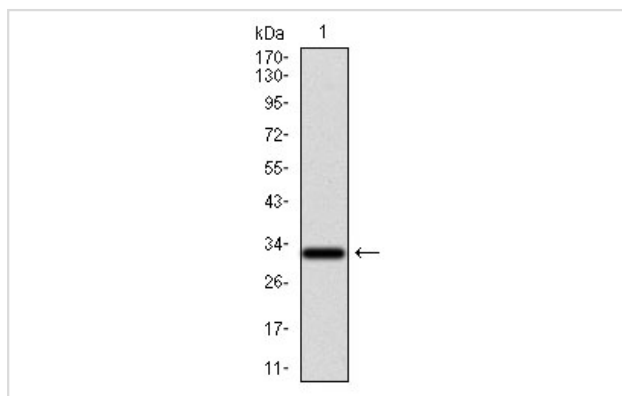
Description

Product Name	GCNF Antibody
Host Species	Mouse
Clonality	Monoclonal
Clone No.	A10-G8
Purification	ProA affinity purified
Applications	WB,ICC,IHC,FC
Species Reactivity	Hu
Immunogen Description	Recombinant protein
Other Names	GCNF 1 antibody GCNF antibody GCNF1 antibody Germ cell nuclear factor antibody hGCNF antibody hRTR antibody NR 61 antibody NR61 antibody nr6a1 antibody NR6A1_HUMAN antibody Nuclear receptor subfamily 6 group A member 1 antibody Orphan nuclear receptor NR6A1 antibody Retinoic acid receptor related testis associated receptor antibody Retinoid receptor related testis specific receptor antibody Retinoid receptor-related testis-specific receptor antibody RTR antibody
Accession No.	Swiss-Prot#:Q15406
Uniprot	Q15406
GeneID	2649;
Calculated MW	54 kDa
Formulation	1*TBS (pH7.4), 1%BSA, Preservative: 0.05% Sodium Azide.
Storage	Store at -20°C

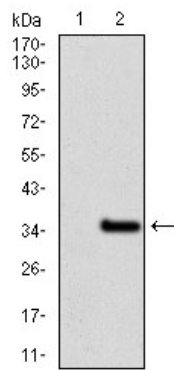
Application Details

WB: 1:500-1:1,000 IHC: 1:100-1:500 ICC: 1:50-1:200 FC: 1:100-1:200

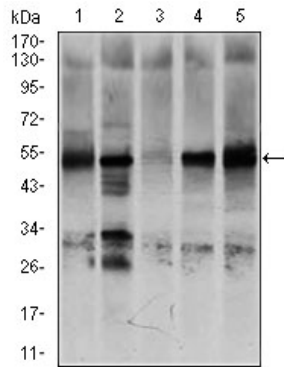
Images



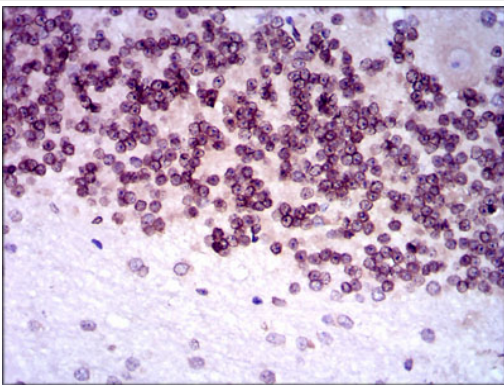
Western blot analysis of GCNF on human GCNF recombinant protein using anti- GCNF antibody at 1/1,000 dilution.



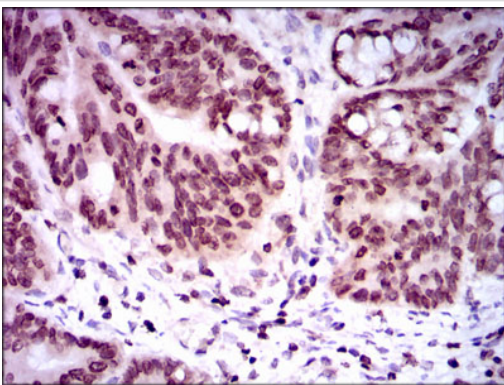
Western blot analysis of GCNF on HEK293 (1) and GCNF-hlgGFc transfected HEK293 (2) cell lysate using anti-GCNF antibody at 1/1,000 dilution.



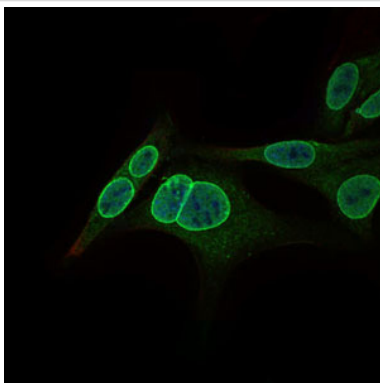
Western blot analysis of GCNF on different cell lysates using anti-GCNF antibody at 1/1,000 dilution. Positive control $\Omega\frac{1}{2}\Omega\frac{1}{2}$ Lane1: K562 Lane2: NTERA-2 Lane3: HEK293 Lane4: HUVE-12 Lane5: HeLa



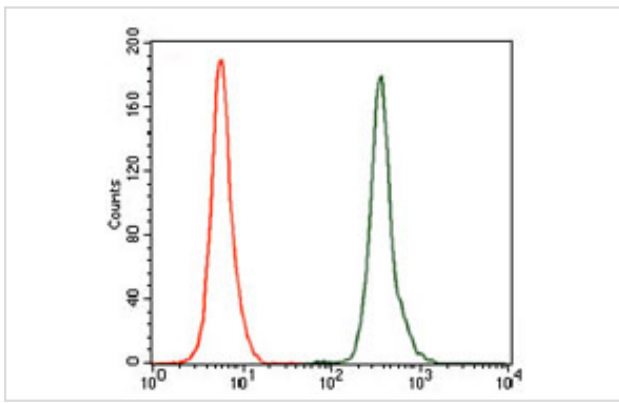
Immunohistochemical analysis of paraffin-embedded human cerebellum tissue using anti-GCNF antibody. Counter stained with hematoxylin.



Immunohistochemical analysis of paraffin-embedded human rectum cancer tissue using anti-GCNF antibody. Counter stained with hematoxylin.



ICC staining GCNF (green) in HepG2 cells. The nuclear counter stain is DAPI (blue). Cells were fixed in paraformaldehyde, permeabilised with 0.25% Triton X100/PBS.



Flow cytometric analysis of K562 cells with GKNF antibody at 1/100 dilution (green) compared with an unlabelled control (cells without incubation with primary antibody; red).

Background

Germ cell nuclear factor (GCNF) is an orphan member of the nuclear receptor gene superfamily that influences neurogenesis and germ cell development. GCNF can homodimerize and bind DNA. GCNF regulates paracrine interaction between the oocyte and somatic cells by regulating the expression of BMP-15 and GDF-9, to affect female fertility. GCNF is present in spermatocytes and round spermatids of adult male mouse testis; northern blot and ribonuclease protection assays have shown GCNF is predominant in the testis. The gene expresses three alternatively spliced transcript variants.

References

Note: This product is for in vitro research use only