

KLHL22 Antibody

Catalog No: #48480

Package Size: #48480-1 50ul #48480-2 100ul

Orders: order@signalwayantibody.com

Support: tech@signalwayantibody.com

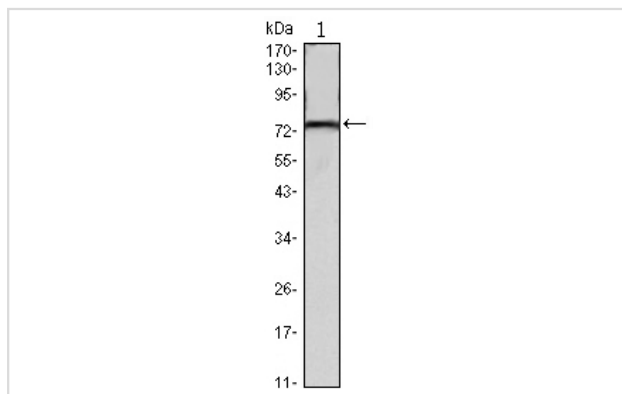
Description

Product Name	KLHL22 Antibody
Host Species	Mouse
Clonality	Monoclonal
Clone No.	A6-B10
Purification	ProA affinity purified
Applications	WB, ICC
Species Reactivity	Hu, Ms
Immunogen Description	Recombinant protein
Other Names	2610318I18Rik antibody kelch-like 22 antibody kelch-like family member 22 antibody Kelch-like protein 22 antibody KELCHL antibody KLH22_HUMAN antibody Khl22 antibody RGD1306288 antibody
Accession No.	Swiss-Prot#:Q53GT1
Uniprot	Q53GT1
GeneID	84861;
Calculated MW	72 kDa
Formulation	1*TBS (pH7.4), 1%BSA, Preservative: 0.05% Sodium Azide.
Storage	Store at -20°C

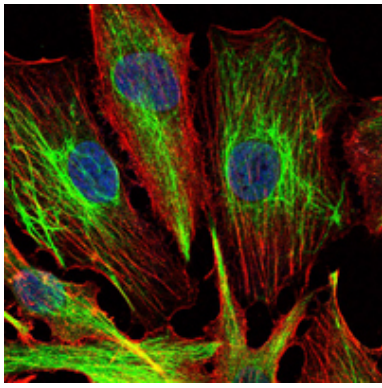
Application Details

WB: 1:500 ICC: 1:100-1:500

Images



Western blot analysis of KLHL22 on mouse brain tissue lysate using anti-KLHL22 antibody at 1/1,000 dilution.



ICC staining KLHL22 (green) and actin filaments (red) in U251 cells. The nuclear counter stain is DAPI (blue). Cells were fixed in paraformaldehyde, permeabilised with 0.25% Triton X100/PBS.

Background

Substrate-specific adapter of a BCR (BTB-CUL3-RBX1) E3 ubiquitin ligase complex required for chromosome alignment and localization of PLK1 at kinetochores. The BCR(KLHL22) ubiquitin ligase complex mediates monoubiquitination of PLK1, leading to PLK1 dissociation from phosphoreceptor proteins and subsequent removal from kinetochores, allowing silencing of the spindle assembly checkpoint (SAC) and chromosome segregation. Monoubiquitination of PLK1 does not lead to PLK1 degradation.

References

Note: This product is for in vitro research use only