

SR-1A Polyclonal Antibody

Catalog No: #41456

Package Size: #41456-1 50ul #41456-2 100ul

Orders: order@signalwayantibody.comSupport: tech@signalwayantibody.com

Description

Product Name	SR-1A Polyclonal Antibody
Host Species	Rabbit
Clonality	Polyclonal
Purification	The antibody was affinity-purified from rabbit antiserum by affinity-chromatography using epitope-specific immunogen.
Applications	WB IHC IF ELISA
Species Reactivity	Hu Ms Rt
Specificity	SR-1A Polyclonal Antibody detects endogenous levels of SR-1A protein.
Immunogen Type	peptide
Immunogen Description	Synthesized peptide derived from the C-terminal region of human SR-1A.
Target Name	SR-1A
Other Names	HTR1A; ADRB2RL1; ADRBRL1; 5-hydroxytryptamine receptor 1A; 5-HT-1A; 5-HT1A; G-21; Serotonin receptor 1A
Accession No.	Swiss-Prot: P08908NCBI Gene ID: 3350
Uniprot	P08908
GeneID	3350;
SDS-PAGE MW	46kd
Concentration	1mg/ml
Formulation	Liquid in PBS containing 50% glycerol, 0.5% BSA and 0.02% sodium azide.
Storage	Store at -20°C/1 year

Application Details

Western Blot: 1/500 - 1/2000.

Immunohistochemistry: 1/100 - 1/300.

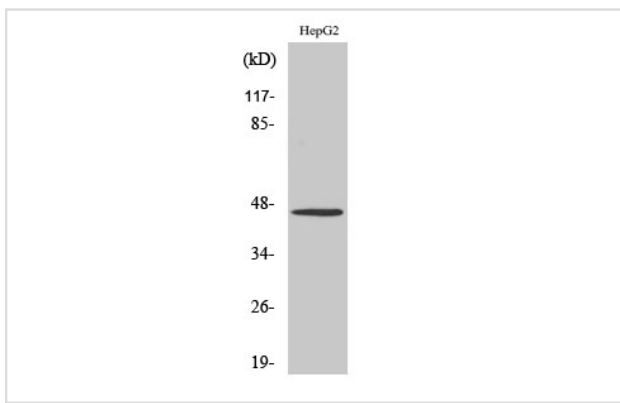
Immunofluorescence: 1/200 - 1/1000.

ELISA: 1/20000.

Not yet tested in other applications.

Images

Western Blot analysis of Jurkat cells using SR-1A Polyclonal Antibody



Note: This product is for in vitro research use only