

## Alpha smooth muscle Actin Antibody

Catalog No: #48499

Package Size: #48499-1 50ul #48499-2 100ul

Orders: order@signalwayantibody.com

Support: tech@signalwayantibody.com

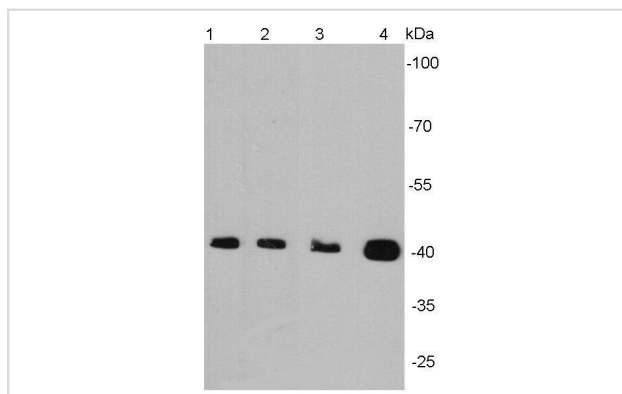
## Description

Product Name	Alpha smooth muscle Actin Antibody
Host Species	Rabbit
Clonality	Polyclonal
Purification	Peptide affinity purified
Applications	WB, ICC, IHC
Species Reactivity	Hu,Ms,Rt(Predicted to react with Xenopus laevis, Chicken, Cow, Horse, Monkey)
Immunogen Description	peptide
Other Names	a actin antibody AAT6 antibody ACTA_HUMAN antibody ACTA2 antibody Actin alpha 2 smooth muscle aorta antibody Actin aortic smooth muscle antibody Actin, aortic smooth muscle antibody ACTSA antibody ACTVS antibody Alpha 2 actin antibody Alpha actin 2 antibody Alpha cardiac actin antibody Alpha-actin-2 antibody Cell growth inhibiting gene 46 protein antibody Cell growth-inhibiting gene 46 protein antibody GIG46 antibody Growth inhibiting gene 46 antibody MYMY5 antibody
Accession No.	Swiss-Prot#:P62736
Uniprot	P62736
GeneID	59;
Calculated MW	42 kDa
Formulation	1*TBS (pH7.4), 1%BSA, 40%Glycerol. Preservative: 0.05% Sodium Azide.
Storage	Store at -20°C

## Application Details

WB: 1:2,000 IHC: 1:200 ICC: 1:200

## Images



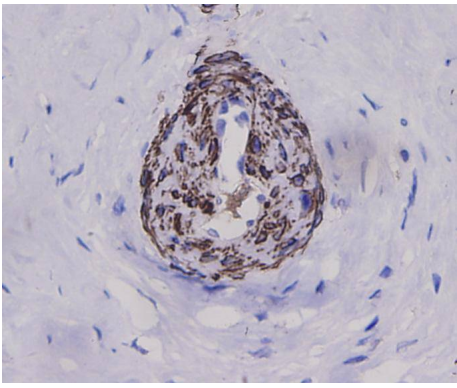
Western blot analysis of alpha smooth muscle actin on different cell lysates using anti-Alpha smooth muscle actin antibody at 1/2000 dilution. Positive control:

Lane 1: Jurkat

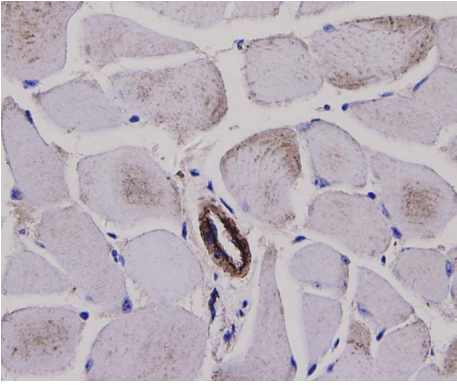
Lane2 : NIH/3T3

Lane3: Mouse embryonic stem cell

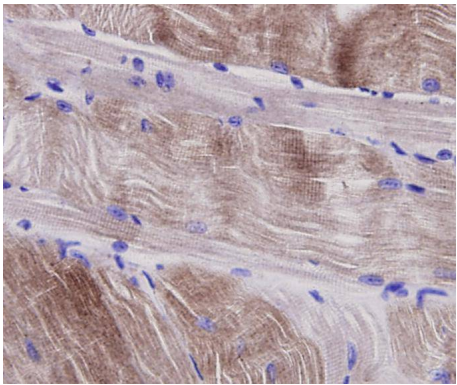
Lane 4: Mouse colon



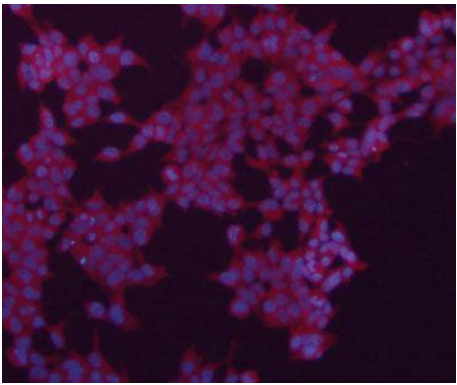
Immunohistochemical analysis of paraffin-embedded human cervical tissue using anti-Alpha smooth muscle actin antibody. Counter stained with hematoxylin.



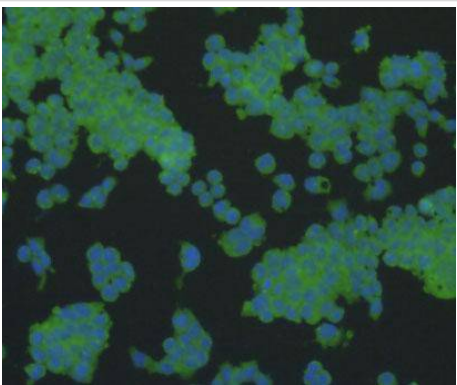
Immunohistochemical analysis of paraffin-embedded mouse skeletal muscle tissue using anti-Alpha smooth muscle actin antibody. Counter stained with hematoxylin.



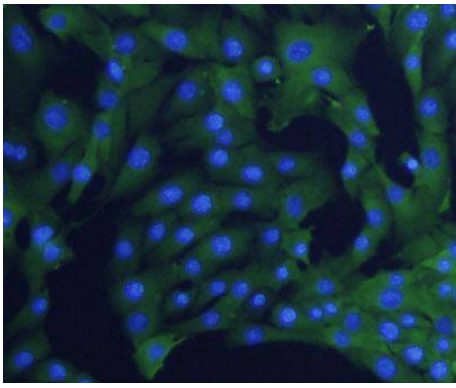
Immunohistochemical analysis of paraffin-embedded mouse smooth muscle tissue using anti-Alpha smooth muscle actin antibody. Counter stained with hematoxylin.



ICC staining of Alpha smooth muscle actin in 293 cells (red). The nuclear counter stain is DAPI (blue). Cells were fixed in paraformaldehyde, permeabilised with 0.25% Triton X100/PBS.



ICC staining of Alpha smooth muscle actin in F9 cells (green). The nuclear counter stain is DAPI (blue). Cells were fixed in paraformaldehyde, permeabilised with 0.25% Triton X100/PBS.



ICC staining Alpha smooth muscle actin in NIH/3T3 cells (green). The nuclear counter stain is DAPI (blue). Cells were fixed in paraformaldehyde, permeabilised with 0.25% Triton X100/PBS.

## Background

Actins are highly conserved proteins involved in cell motility, structure and integrity. Actin has been found to be expressed in at least six isomeric forms. It is expressed in heart and skeletal striated muscle tissue, and in certain smooth muscle tissues, regulating contractile potentials for these cells. It is also expressed in the cytoplasm of non-muscle cells, functioning to control cell structure and motility. Smooth muscle alpha actin is of further interest because it is one of a few genes whose expression is relatively restricted to vascular smooth muscle cells. Expression of smooth muscle alpha actin is regulated by hormones, cell proliferation, and altered by pathological conditions including oncogenic transformation and atherosclerosis.

## References

Note: This product is for in vitro research use only