

## GPR49/LGR5 alpha/beta Antibody

Catalog No: #48500

Package Size: #48500-1 50ul #48500-2 100ul

Orders: order@signalwayantibody.com

Support: tech@signalwayantibody.com

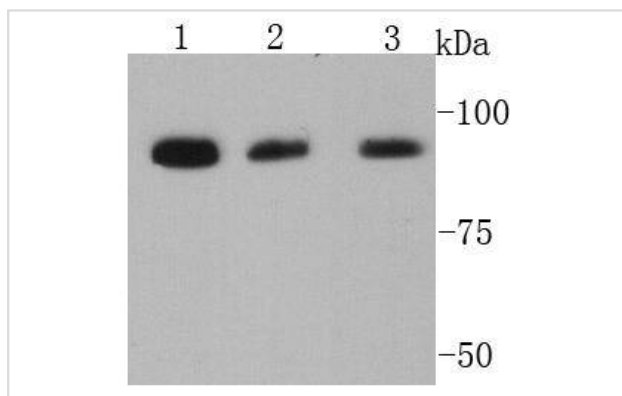
## Description

Product Name	GPR49/LGR5 alpha/beta Antibody
Host Species	Rabbit
Clonality	Polyclonal
Purification	Peptide affinity purified
Applications	WB, IHC
Species Reactivity	Hu, Ms
Immunogen Description	peptide
Other Names	FEX antibody G protein coupled receptor 49 antibody G protein coupled receptor 67 antibody g protein-coupled receptor fex antibody G-protein coupled receptor 49 antibody G-protein coupled receptor 67 antibody G-protein coupled receptor HG38 antibody GPR 49 antibody GPR 67 antibody GPR49 antibody GPR67 antibody GRP 49 antibody GRP49 antibody HG 38 antibody HG38 antibody Leucine rich repeat containing G protein coupled receptor 5 antibody Leucine-rich repeat-containing G-protein coupled receptor 5 antibody LGR 5 antibody LGR5 antibody LGR5_HUMAN antibody MGC117008 antibody Orphan G protein coupled receptor HG38 antibody
Accession No.	Swiss-Prot#:O75473
Uniprot	O75473
GeneID	8549;
Calculated MW	95 kDa
Formulation	1*TBS (pH7.4), 1%BSA, 40%Glycerol. Preservative: 0.05% Sodium Azide.
Storage	Store at -20°C

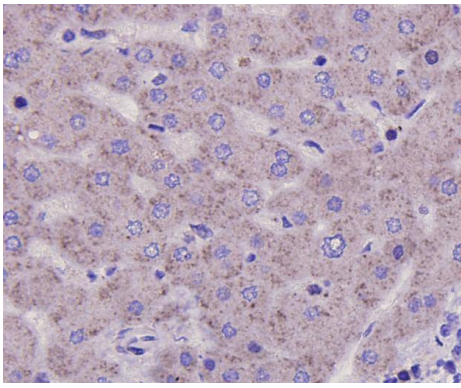
## Application Details

WB: 1:1,000 IHC: 1:200

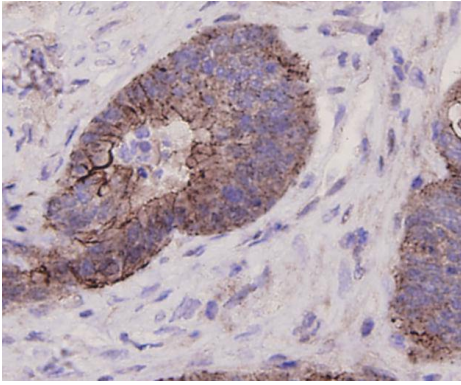
## Images



Western blot analysis of LGR5 on different cell lysates using anti-VCP antibody at 1/1000 dilution. Positive control:  
Lane 1: F9 Lane 2: Hela Lane 3: K562



Immunohistochemical analysis of paraffin-embedded human liver tissue using anti-LGR5 antibody. Counter stained with hematoxylin.



Immunohistochemical analysis of paraffin-embedded human colon cancer tissue using anti-LGR5 antibody. Counter stained with hematoxylin.

## Background

G-protein coupled receptor GPR49 (also known as Leucine-rich repeat-containing G-protein coupled receptor 5, Lgr5) is a stem cell marker of the intestinal epithelium and the hair follicle. It is expressed in the gonads, the adrenal gland, and in the brain, overexpressed in cancers of the ovary, colon and liver.

## References

Note: This product is for in vitro research use only