

## ERK1 Antibody

Catalog No: #48504

Package Size: #48504-1 50ul #48504-2 100ul

Orders: order@signalwayantibody.com

Support: tech@signalwayantibody.com

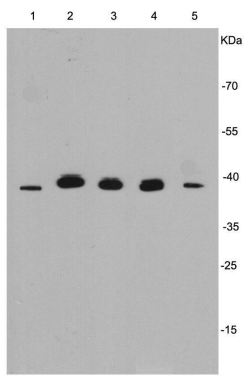
## Description

Product Name	ERK1 Antibody
Host Species	Rabbit
Clonality	Polyclonal
Purification	Peptide affinity purified
Applications	WB, ICC, IHC
Species Reactivity	Hu, Ms, Rt
Immunogen Description	peptide
Other Names	ERK 1 antibody ERK antibody ERK-1 antibody ERK1 antibody ERT 2 antibody ERT2 antibody Extracellular Signal Regulated Kinase 1 antibody Extracellular signal related kinase 1 antibody Extracellular signal-regulated kinase 1 antibody HGNC6877 antibody HS44KDAP antibody HUMKER1A antibody Insulin Stimulated MAP2 Kinase antibody Insulin-stimulated MAP2 kinase antibody MAP kinase 1 antibody MAP kinase 3 antibody MAP Kinase antibody MAP kinase isoform p44 antibody MAPK 1 antibody MAPK 3 antibody MAPK antibody MAPK1 antibody Mapk3 antibody MGC20180 antibody Microtubule Associated Protein 2 Kinase antibody Microtubule-associated protein 2 kinase antibody Mitogen Activated Protein Kinase 3 antibody Mitogen-activated protein kinase 1 antibody Mitogen-activated protein kinase 3 antibody MK03_HUMAN antibody OTTHUMP00000174538 antibody OTTHUMP00000174541 antibody p44 ERK1 antibody p44 MAPK antibody p44-ERK1 antibody p44-MAPK antibody P44ERK1 antibody P44MAPK antibody PRKM 3 antibody PRKM3 antibody Protein Kinase Mitogen Activated 3 antibody
Accession No.	Swiss-Prot#:P27361
Uniprot	P27361
GeneID	5595;
Calculated MW	44 kDa
Formulation	1*TBS (pH7.4), 1%BSA, 40%Glycerol. Preservative: 0.05% Sodium Azide.
Storage	Store at -20°C

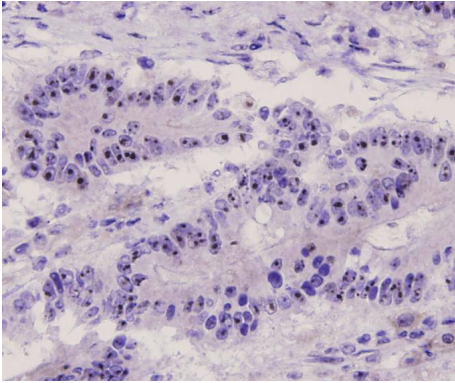
## Application Details

WB: 1:500-1:1,000 IHC: 1:200 ICC: 1:200

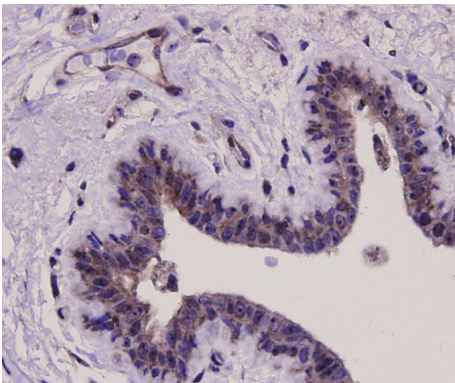
## Images



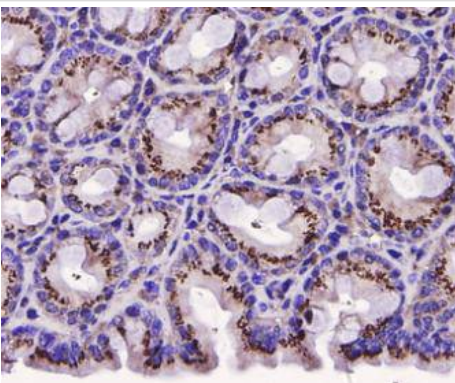
Western blot analysis of ERK1 on different cell lysates using anti- ERK1 antibody at 1/1000 dilution. Positive control:  
 Lane 1: Hela Lane2: SW480 Lane3: HCT116 Lane  
 4: HepG2 Lane5: PC12



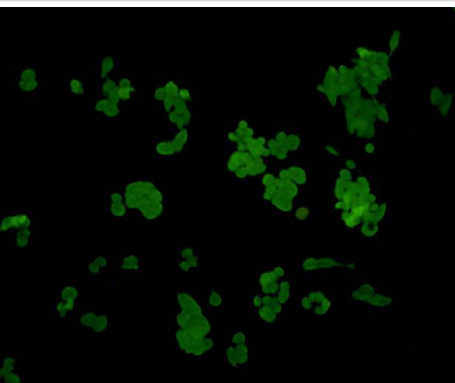
Immunohistochemical analysis of paraffin-embedded human colon carcinoma tissue using anti-ERK1 antibody. Counter stained with hematoxylin.



Immunohistochemical analysis of paraffin-embedded human breast carcinoma tissue using anti-ERK1 antibody. Counter stained with hematoxylin.



Immunohistochemical analysis of paraffin-embedded mouse large intestine tissue using anti-ERK1 antibody. Counter stained with hematoxylin.



ICC staining of ERK1 in LOVO cells (green). Cells were fixed in paraformaldehyde, permeabilised with 0.25% Triton X100/PBS.

## Background

---

Mitogen-activated protein kinases (MAPKs) are a widely conserved family of serine/threonine protein kinases involved in many cellular programs, such as cell proliferation, differentiation, motility, and death. The p44/42 MAPK (Erk1/2) signaling pathway can be activated in response to a diverse range of extracellular stimuli including mitogens, growth factors, and cytokines, and research investigators consider it an important target in the diagnosis and treatment of cancer. Upon stimulation, a sequential three-part protein kinase cascade is initiated, consisting of a MAP kinase kinase kinase (MAPKKK or MAP3K), a MAP kinase kinase (MAPKK or MAP2K), and a MAP kinase (MAPK). Multiple p44/42 MAP3Ks have been identified, including members of the Raf family, as well as Mos and Tpl2/COT. MEK1 and MEK2 are the primary MAPKKs in this pathway.

## References

---

---

Note: This product is for in vitro research use only