

ERK2 Antibody

Catalog No: #48506

Package Size: #48506-1 50ul #48506-2 100ul

Orders: order@signalwayantibody.com

Support: tech@signalwayantibody.com

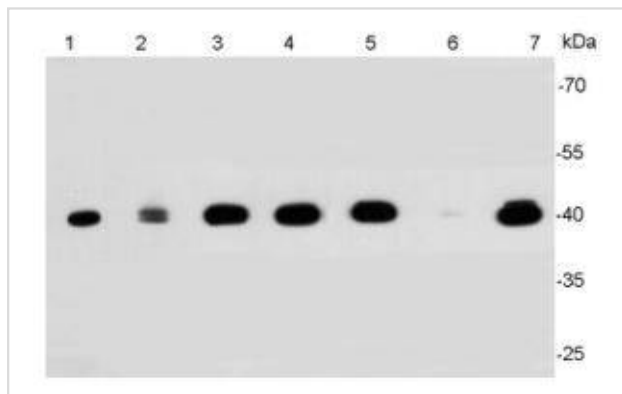
Description

Product Name	ERK2 Antibody
Host Species	Rabbit
Clonality	Polyclonal
Purification	Peptide affinity purified
Applications	WB, ICC, IHC, FC
Species Reactivity	Hu, Ms, Rt
Immunogen Description	peptide
Other Names	ERK 1 antibody ERK 2 antibody ERK-2 antibody ERK1 antibody erk1/2 antibody ERK2 antibody ERT1 antibody ERT2 antibody Extracellular signal regulated kinase 1 antibody Extracellular signal-regulated kinase 2 antibody MAP kinase 1 antibody MAP kinase 2 antibody MAP kinase isoform p42 antibody MAP kinase isoform p44 antibody MAPK 1 antibody MAPK 2 antibody MAPK 3 antibody Mapk1 antibody MAPK2 antibody MAPK3 antibody Mitogen-activated protein kinase 1 antibody Mitogen-activated protein kinase 2 antibody MK01_HUMAN antibody p38 antibody p40 antibody p41 antibody p42-MAPK antibody PRKM 2 antibody
Accession No.	Swiss-Prot#:P28482
Uniprot	P28482
GeneID	5594;
Calculated MW	42 kDa
Formulation	1*TBS (pH7.4), 1%BSA, 40%Glycerol. Preservative: 0.05% Sodium Azide.
Storage	Store at -20°C

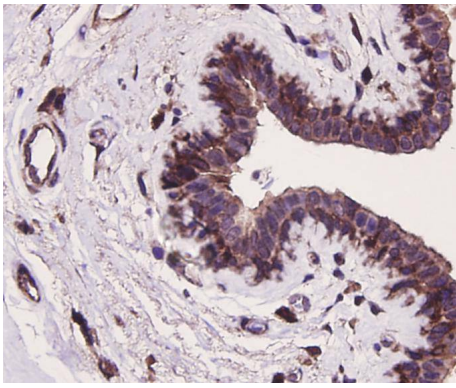
Application Details

WB: 1:1,000-1:2,000 IHC: 1:200 ICC: 1:200 FC: 1:100-1:200

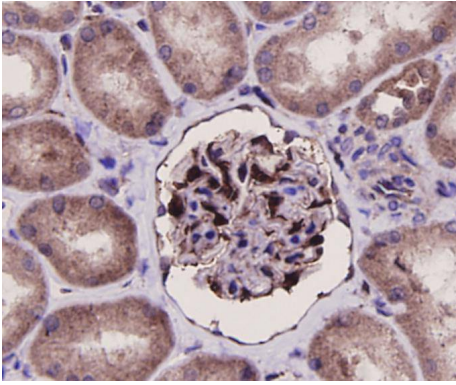
Images



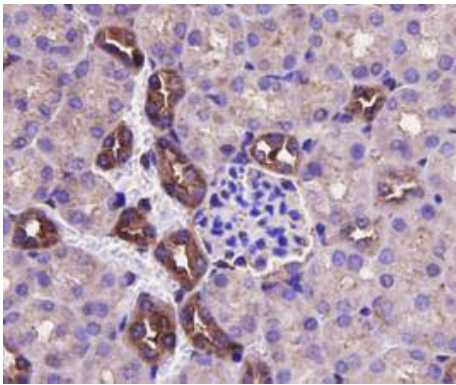
Western blot analysis of ERK2 on different cell lysates using anti-ERK2 antibody at 1/2000 dilution. Positive control:
 Lane 1: Jurkat Lane 2: A431 Lane 3: PC12 Lane 4: NIH/3T3
 Lane 5: Hela Lane 6: HT-29 Lane 7: MCF-7



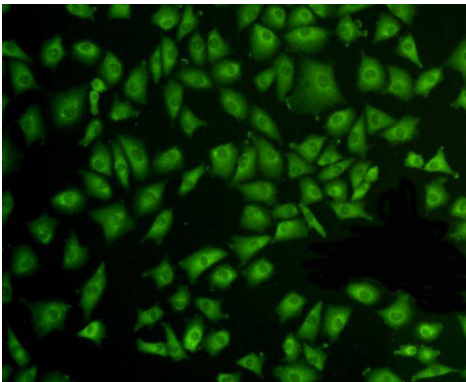
Immunohistochemical analysis of paraffin-embedded human breast carcinoma tissue using anti-ERK2 antibody. Counter stained with hematoxylin.



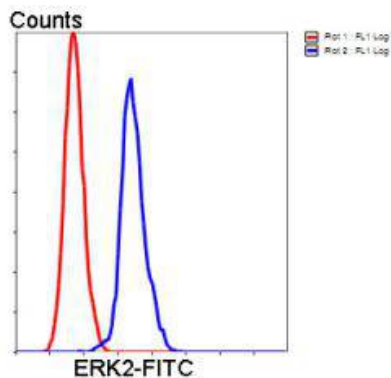
Immunohistochemical analysis of paraffin-embedded human kidney tissue using anti-ERK2 antibody. Counter stained with hematoxylin.



Immunohistochemical analysis of paraffin-embedded mouse kidney tissue using anti-ERK2 antibody. Counter stained with hematoxylin.



ICC staining of ERK2 in A549 cells (green). Cells were fixed in paraformaldehyde, permeabilised with 0.25% Triton X100/PBS.



Flow cytometric analysis of HeLa cells with SIRT1 antibody at 1/100 dilution (blue) compared with an unlabelled control (cells without incubation with primary antibody; red). Goat anti rabbit IgG (FITC) was used as the secondary antibody.

Background

Serine/threonine kinase which acts as an essential component of the MAP kinase signal transduction pathway. MAPK1/ERK2 and MAPK3/ERK1 are the 2 MAPKs which play an important role in the MAPK/ERK cascade. They participate also in a signaling cascade initiated by activated KIT and KITLG/SCF. Depending on the cellular context, the MAPK/ERK cascade mediates diverse biological functions such as cell growth, adhesion, survival and differentiation through the regulation of transcription, translation, cytoskeletal rearrangements. The MAPK/ERK cascade plays also a role in initiation and regulation of meiosis, mitosis, and postmitotic functions in differentiated cells by phosphorylating a number of transcription factors.

References

Note: This product is for in vitro research use only