

Cullin-3 Antibody

Catalog No: #48517

Package Size: #48517-1 50ul #48517-2 100ul

Orders: order@signalwayantibody.com

Support: tech@signalwayantibody.com

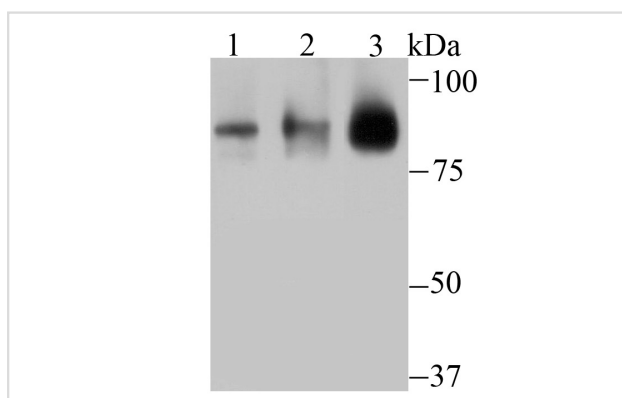
Description

Product Name	Cullin-3 Antibody
Host Species	Rabbit
Clonality	Polyclonal
Purification	Peptide affinity purified
Applications	WB,IHC,FC
Species Reactivity	Hu, Ms
Immunogen Description	Peptide.
Other Names	CUL 3 antibody Cul-3 antibody cul3 antibody CUL3_HUMAN antibody Cullin-3 antibody Cullin3 antibody KIAA0617 antibody PHA2E antibody
Accession No.	Swiss-Prot#:Q13618
Uniprot	Q13618
GeneID	8452;
Calculated MW	89 kDa
Formulation	1*TBS (pH7.4), 0.5%BSA, 50%Glycerol. Preservative: 0.05% Sodium Azide.
Storage	Store at -20°C

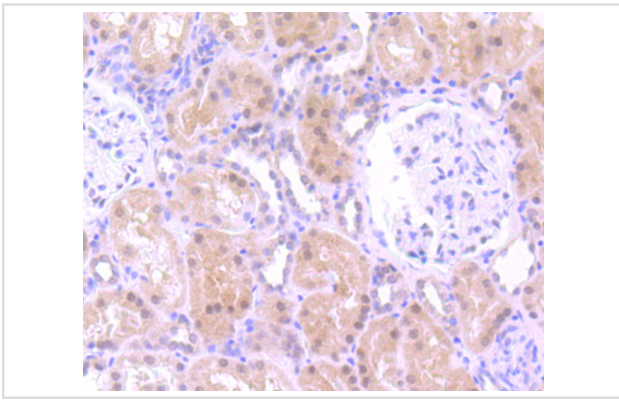
Application Details

WB: 1:500-1:1,000 IHC: 1:50-1:200FC: 1:50-1:100

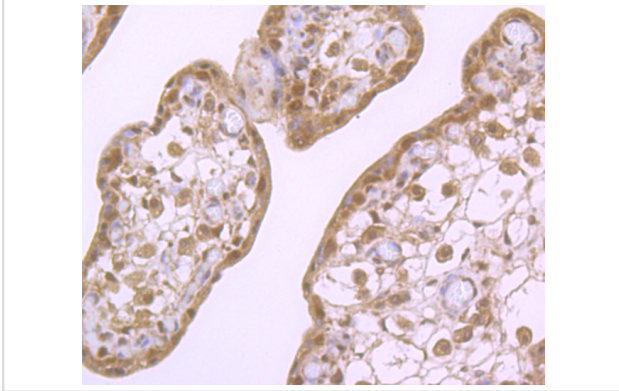
Images



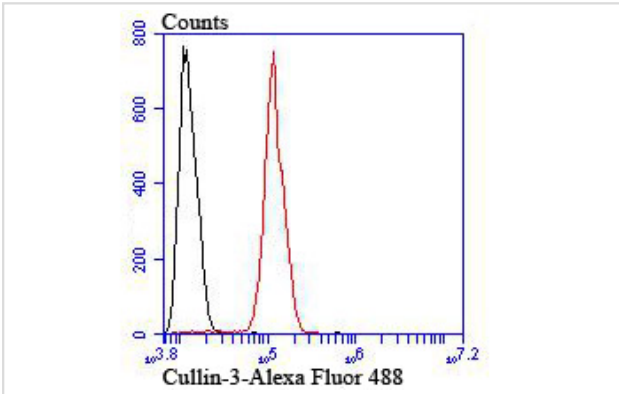
Western blot analysis of Cullin 3 on different lysates using anti-Cullin 3 antibody at 1/1,000 dilution. Positive control Ω $\frac{1}{2}$ Ω $\frac{1}{2}$ Lane1: SH-SY5Y Lane2: 293T Lane3: Mouse testis tissue



Immunohistochemical analysis of paraffin-embedded human kidney tissue using anti-Cullin-3 antibody. Counter stained with hematoxylin.



Immunohistochemical analysis of paraffin-embedded human placenta tissue using anti-Cullin-3 antibody. Counter stained with hematoxylin.



Flow cytometric analysis of SH-SY5Y cells with Cullin 3 antibody at 1/100 dilution (red) compared with an unlabelled control (cells without incubation with primary antibody; black). Alexa Fluor 488-conjugated goat anti-rabbit IgG was used as the secondary antibody.

Background

Cullin proteins comprise a distinct family of mediators that participate in the selective targeting of proteins for ubiquitin (Ub)-mediated proteolysis. CUL-1, which is the mammalian homolog of yeast Cdc53, is an integral component of the E3 ubiquitin ligase complex designated SCF. The SCF (Skp1/CUL-1/F-box protein complex) consists of Skp1 associating with both CUL-1 and an F-box protein, such as Skp2, which determines the substrate specificity of the complex. CUL-1-mediated ubiquitination results in the degradation of cell cycle proteins cyclin D, p21 and cyclin E. Another cullin, CUL-3, facilitates the degradation of cyclin E independent of SCF activity, while CUL-2 associates with the tumor suppressing protein VHL and elongin B to form VBC complexes, which structurally resemble the SCF ligase. Proteolysis also occurs by way of CUL-4 associating with Nedd-8, a ubiquitin-like protein, where it too functions as an active component of a multifunctional E3 complex. CUL-5, also designated vasopressin-activated, calcium-mobilizing protein (VACM-1), is also included in the cullin family as it shares substantial sequence homology with CUL-1.

References

Note: This product is for in vitro research use only