

SRp20 Polyclonal Antibody

Catalog No: #41460

Package Size: #41460-1 50ul #41460-2 100ul

Orders: order@signalwayantibody.comSupport: tech@signalwayantibody.com

Description

Product Name	SRp20 Polyclonal Antibody
Host Species	Rabbit
Clonality	Polyclonal
Purification	The antibody was affinity-purified from rabbit antiserum by affinity-chromatography using epitope-specific immunogen.
Applications	WB IHC IF ELISA
Species Reactivity	Hu Ms
Specificity	SRp20 Polyclonal Antibody detects endogenous levels of SRp20 protein.
Immunogen Type	peptide
Immunogen Description	Synthesized peptide derived from the C-terminal region of human SRp20.
Target Name	SRp20
Other Names	SRSF3; SFRS3; SRP20; Serine/arginine-rich splicing factor 3; Pre-mRNA-splicing factor SRP20; Splicing factor; arginine/serine-rich 3
Accession No.	Swiss-Prot: P84103NCBI Gene ID: 6428
Uniprot	P84103
GeneID	6428;
SDS-PAGE MW	25kd
Concentration	1mg/ml
Formulation	Liquid in PBS containing 50% glycerol, 0.5% BSA and 0.02% sodium azide.
Storage	Store at -20°C/1 year

Application Details

Western Blot: 1/500 - 1/2000.

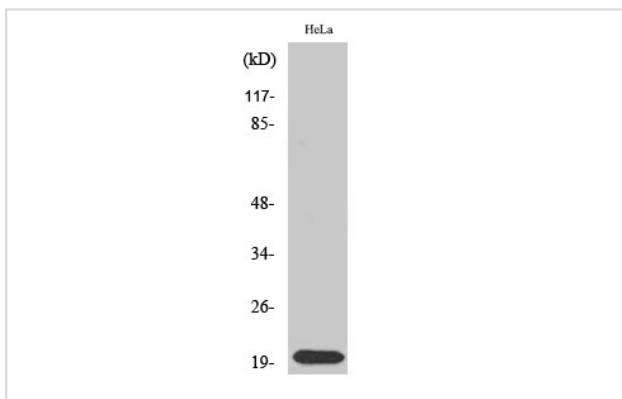
Immunohistochemistry: 1/100 - 1/300.

Immunofluorescence: 1/200 - 1/1000.

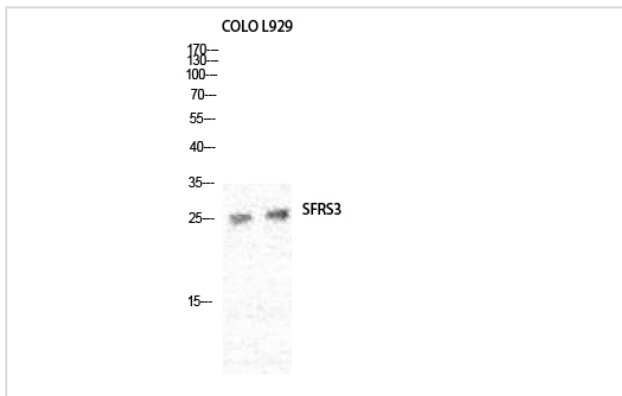
ELISA: 1/5000.

Not yet tested in other applications.

Images



Western Blot analysis of Jurkat cells using SRp20 Polyclonal Antibody



Western Blot analysis of COLO L929 cells using SRp20 Polyclonal Antibody

Note: This product is for in vitro research use only