

## Mitofusin 2 Antibody

Catalog No: #48524

Package Size: #48524-1 50ul #48524-2 100ul

Orders: order@signalwayantibody.com

Support: tech@signalwayantibody.com

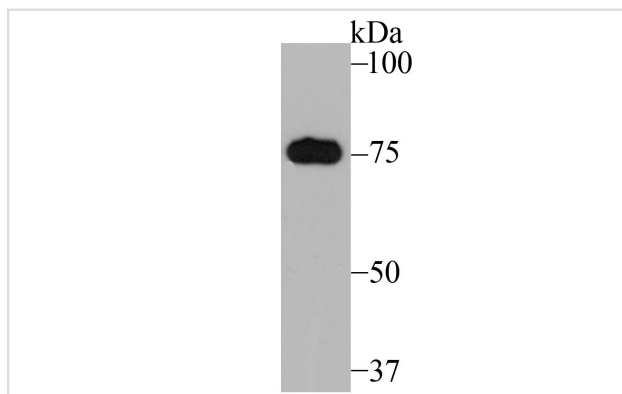
## Description

Product Name	Mitofusin 2 Antibody
Host Species	Rabbit
Clonality	Polyclonal
Purification	Protein affinity purified
Applications	WB,ICC,FC
Species Reactivity	Hu, Rt
Immunogen Description	Recombinant protein
Other Names	CMT2A antibody CMT2A2 antibody CPRP 1 antibody CPRP1 antibody EC 3.6.5.- antibody Fzo antibody HSG antibody hyperplasia suppressor gene antibody Hypertension related protein 1 antibody KIAA0214 antibody MARF antibody MFN 2 antibody Mfn2 antibody MFN2_HUMAN antibody Mitochondrial assembly regulatory factor antibody Mitofusin-2 antibody Mitofusin2 antibody Transmembrane GTPase MFN2 antibody
Accession No.	Swiss-Prot#:O95140
Uniprot	O95140
GeneID	9927;
Calculated MW	86 kDa
Formulation	1*TBS (pH7.4), 0.5%BSA, 50%Glycerol. Preservative: 0.05% Sodium Azide.
Storage	Store at -20°C

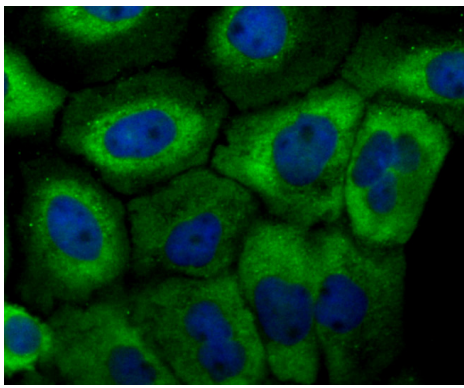
## Application Details

WB: 1:500-1:1,000 ICC: 1:50-1:200 FC: 1:50-1:100

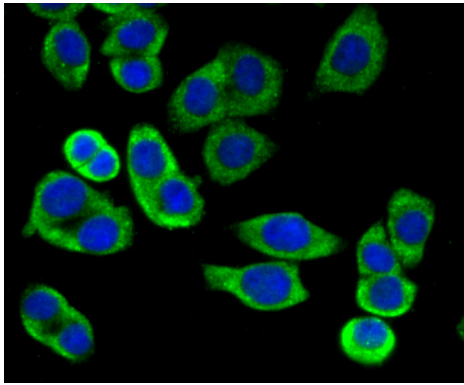
## Images



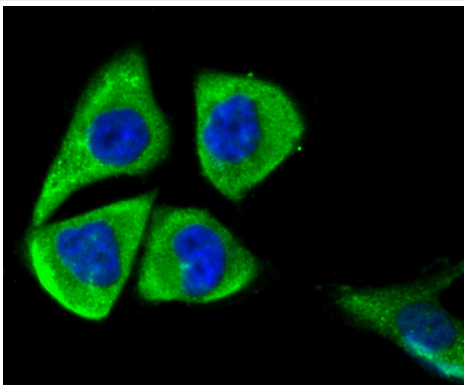
Western blot analysis of Mitofusin 2 on Rat heart tissue lysates using anti-Mitofusin 2 antibody at 1/1,000 dilution.



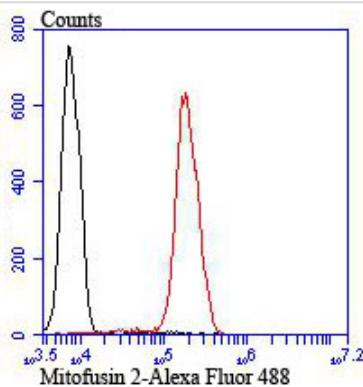
ICC staining Mitofusin 2 in A431 cells (green). The nuclear counter stain is DAPI (blue). Cells were fixed in paraformaldehyde, permeabilised with 0.25% Triton X100/PBS.



ICC staining Mitofusin 2 in LOVO cells (green). The nuclear counter stain is DAPI (blue). Cells were fixed in paraformaldehyde, permeabilised with 0.25% Triton X100/PBS.



ICC staining Mitofusin 2 in PC-3M cells (green). The nuclear counter stain is DAPI (blue). Cells were fixed in paraformaldehyde, permeabilised with 0.25% Triton X100/PBS.



Flow cytometric analysis of Jurkat cells with Mitofusin 2 antibody at 1/100 dilution (red) compared with an unlabelled control (cells without incubation with primary antibody; black). Alexa Fluor 488-conjugated goat anti-rabbit IgG was used as the secondary antibody.

## Background

Mitofusin 1 (Mfn1) and mitofusin 2 (Mfn2) are homologs for the *Drosophila* protein fuzzy onion (Fzo). They are mitochondrial membrane proteins and are mediators of mitochondrial fusion. A GTPase domain is required for Mfn protein function but the molecular mechanisms of the GTPase-dependent reaction as well as the functional division of the two Mfn proteins are unknown. They are essential for embryonic development and may play a role in the pathobiology of obesity. Although the Mfn1 and Mfn2 genes are broadly expressed, they show different levels of expression in different tissues. Two Mfn1 transcripts are elevated in heart, while Mfn2 mRNA is abundantly expressed in heart and muscle tissue but present only at low levels in many other tissues. Mfn1 localizes to mitochondria and participates in at least two different high molecular weight protein complexes in a GTP-dependent manner. Purified recombinant Mfn1 exhibited approximately eightfold higher GTPase activity than Mfn2.

## References

---

Note: This product is for in vitro research use only