

TROP2 Antibody

Catalog No: #48535

Package Size: #48535-1 50ul #48535-2 100ul

Orders: order@signalwayantibody.com

Support: tech@signalwayantibody.com

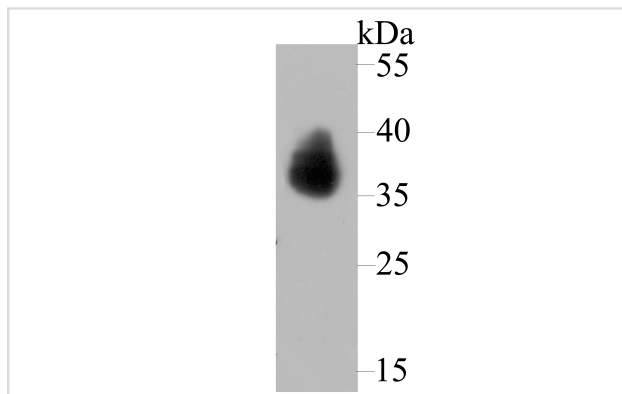
Description

Product Name	TROP2 Antibody
Host Species	Rabbit
Clonality	Polyclonal
Purification	Protein affinity purified
Applications	WB,ICC,IHC
Species Reactivity	Hu
Immunogen Description	Recombinant protein.
Other Names	Cell surface glycoprotein Trop 2 antibody Cell surface glycoprotein Trop-2 antibody Cell surface glycoprotein Trop2 antibody Epithelial glycoprotein 1 antibody GA733 1 antibody GA7331 antibody M1S 1 antibody M1S1 antibody Membrane component chromosome 1 surface marker 1 antibody Pancreatic carcinoma marker protein GA733 1 antibody Pancreatic carcinoma marker protein GA733-1 antibody Pancreatic carcinoma marker protein GA7331 antibody TACD 2 antibody TACD2_HUMAN antibody TACSTD 2 antibody Tacstd2 antibody Trop 2 antibody Trop2 antibody Tumor associated calcium signal transducer 2 precursor antibody Tumor-associated calcium signal transducer 2 antibody
Accession No.	Swiss-Prot#:P09758
Uniprot	P09758
GeneID	4070;
Calculated MW	35 kDa
Formulation	1*TBS (pH7.4), 0.5%BSA, 50%Glycerol. Preservative: 0.05% Sodium Azide.
Storage	Store at -20°C

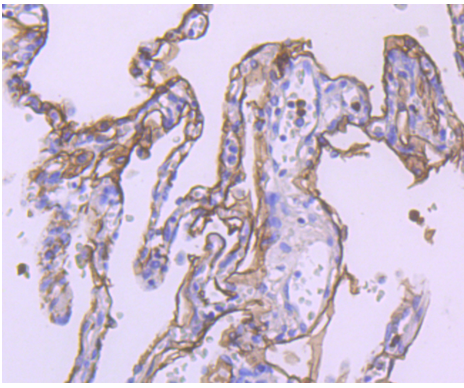
Application Details

WB: 1:500-1:2,000 IHC: 1:50-1:200 ICC: 1:50-1:200

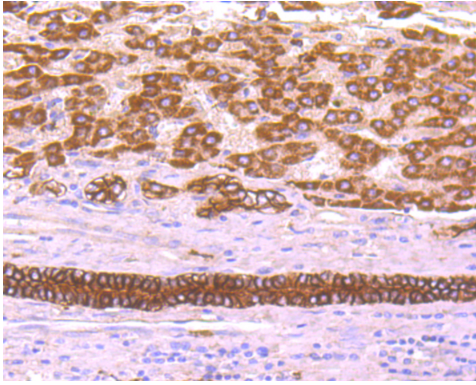
Images



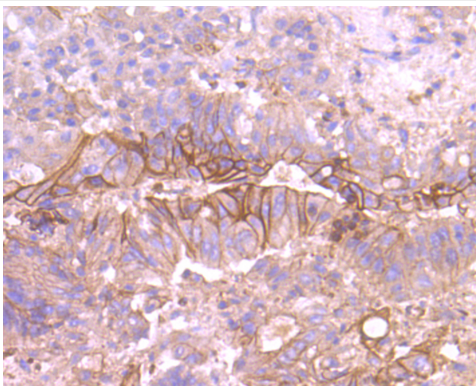
Western blot analysis of TROP2 on A431 cell lysate using anti-TROP2 antibody at 1/500 dilution.



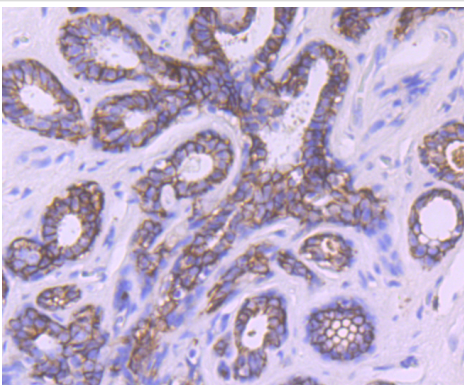
Immunohistochemical analysis of paraffin-embedded human lung cancer tissue using anti-TROP2 antibody. Counter stained with hematoxylin.



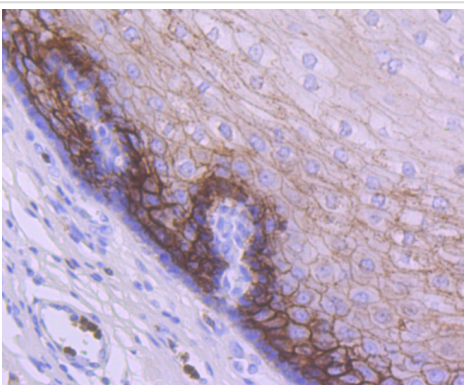
Immunohistochemical analysis of paraffin-embedded human liver cancer tissue using anti-TROP2 antibody. Counter stained with hematoxylin.



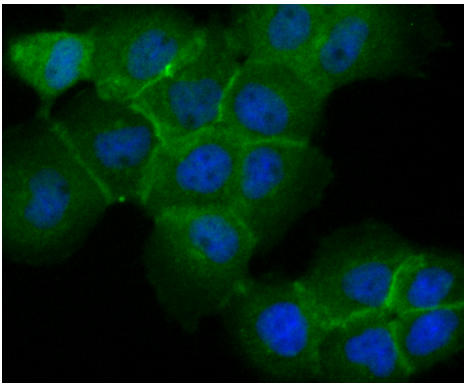
Immunohistochemical analysis of paraffin-embedded human colon cancer tissue using anti-TROP2 antibody. Counter stained with hematoxylin.



Immunohistochemical analysis of paraffin-embedded human breast cancer tissue using anti-TROP2 antibody. Counter stained with hematoxylin.



Immunohistochemical analysis of paraffin-embedded human esophagus tissue using anti-TROP2 antibody. Counter stained with hematoxylin.



ICC staining TROP2 in A431 cells (green). The nuclear counter stain is DAPI (blue). Cells were fixed in paraformaldehyde, permeabilised with 0.25% Triton X100/PBS.

Background

TROP-2, also known as tumor-associated calcium signal transducer 2 (TACSTD2), pancreatic carcinoma marker protein GA733-1, membrane component chromosome 1, surface marker 1 (M1S1) or epithelial glycoprotein-1 (EGP-1), is a cell surface glycoprotein receptor. It is a single pass type I membrane protein containing one thyroglobulin type-1 domain, an epidermal growth factor-like repeat, a phosphatidylinositol binding site and tyrosine phosphorylation sites near the C-terminus. TROP-2 plays a role in transducing intracellular calcium signals. It is expressed in trophoblast cells, cornea and multistratified epithelia. It is also highly expressed in several types of tumors and is involved in regulating the growth of carcinoma cells. Mutations in the gene encoding TROP-2 can result in gelatinous drop-like corneal dystrophy (GDLD) also referred to as lattice corneal dystrophy type III, an autosomal recessive disorder that causes severe visual impairment.

References

Note: This product is for in vitro research use only