

## KV4.3 Antibody

Catalog No: #48544

Package Size: #48544-1 50ul #48544-2 100ul

Orders: order@signalwayantibody.com

Support: tech@signalwayantibody.com

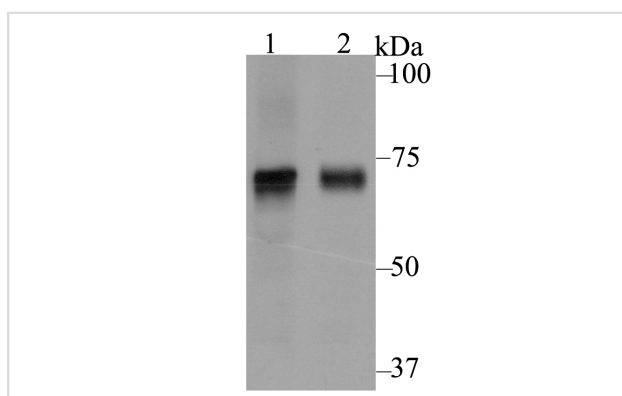
## Description

Product Name	KV4.3 Antibody
Host Species	Rabbit
Clonality	Polyclonal
Purification	Peptide affinity purified.
Applications	WB,ICC,IHC,FC
Species Reactivity	Hu, Ms
Immunogen Description	Synthetic peptide within human Kv4.3 440-480 aa.
Other Names	KCND 3 antibody KCND 3L antibody KCND 3S antibody Kcnd3 antibody KCND3_HUMAN antibody KCND3L antibody KCND3S antibody KSHIVB antibody Kv 4.3 antibody MGC14203 antibody MGC142037 antibody OTTHUMP0000063948 antibody Potassium ioinic channel Kv4.3 antibody Potassium voltage gated channel Shal related subfamily member 3 antibody Potassium voltage gated channel subfamily D member 3 antibody Potassium voltage-gated channel subfamily D member 3 antibody Sha1 related potassium channel Kv4.3 antibody Voltage gated K+ channel antibody Voltage gated potassium channel Kv4.3 antibody Voltage gated potassium channel subunit Kv4.3 antibody Voltage-gated potassium channel subunit Kv4.3 antibody
Accession No.	Swiss-Prot#:Q9UK17
Uniprot	Q9UK17
GeneID	3752;
Calculated MW	73 kDa
Formulation	1*TBS (pH7.4), 0.5%BSA, 50%Glycerol. Preservative: 0.05% Sodium Azide.
Storage	Store at -20°C

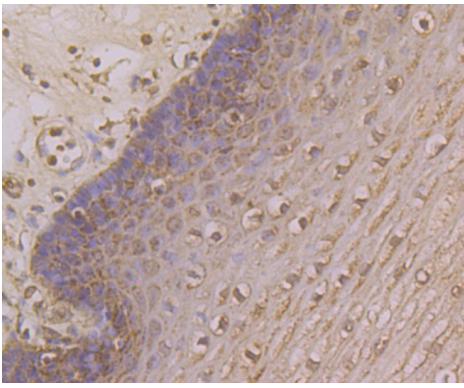
## Application Details

WB: 1:500-1:1,000 IHC: 1:50-1:200 ICC: 1:200FC: 1:50-1:100

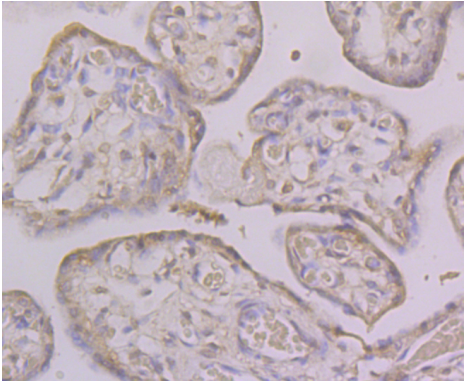
## Images



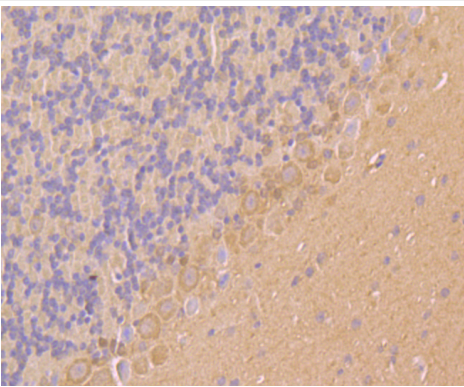
Western blot analysis of Kv4.3 on different lysates using anti-Kv4.3 antibody at 1/1,000 dilution. Positive control  $\Omega\frac{1}{2}\Omega\frac{1}{2}$  Lane1: MCF-7 Lane2: Mouse marrow



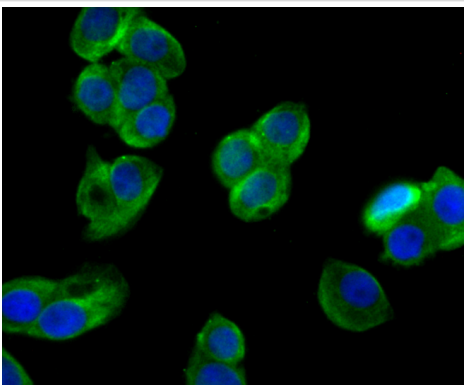
Immunohistochemical analysis of paraffin-embedded human esophagus tissue using anti-Kv4.3 antibody. Counter stained with hematoxylin.



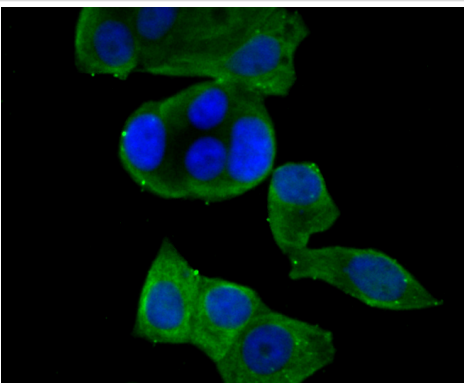
Immunohistochemical analysis of paraffin-embedded human placenta tissue using anti-Kv4.3 antibody. Counter stained with hematoxylin.



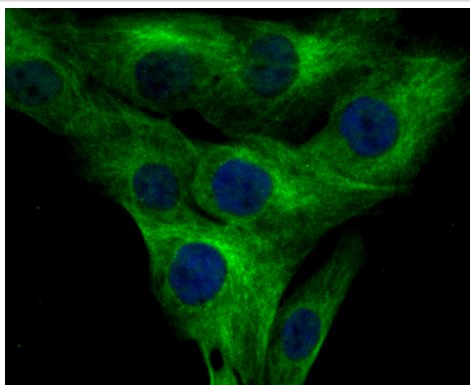
Immunohistochemical analysis of paraffin-embedded mouse cerebellum tissue using anti-Kv4.3 antibody. Counter stained with hematoxylin.



ICC staining Kv4.3 in LOVO cells (green). The nuclear counter stain is DAPI (blue). Cells were fixed in paraformaldehyde, permeabilised with 0.25% Triton X100/PBS.

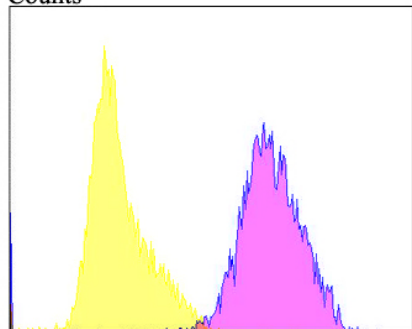


ICC staining Kv4.3 in MCF-7 cells (green). The nuclear counter stain is DAPI (blue). Cells were fixed in paraformaldehyde, permeabilised with 0.25% Triton X100/PBS.



ICC staining Kv4.3 in MG-63 cells (green). The nuclear counter stain is DAPI (blue). Cells were fixed in paraformaldehyde, permeabilised with 0.25% Triton X100/PBS.

Counts



Flow cytometric analysis of MG-63 cells with Kv4.3 antibody at 1/100 dilution (purple) compared with an unlabelled control (cells without incubation with primary antibody; yellow). Alexa Fluor 488-conjugated goat anti-rabbit IgG was used as the secondary antibody

## Background

Pore-forming (alpha) subunit of voltage-gated rapidly inactivating A-type potassium channels. May contribute to I(To) current in heart and I(Sa) current in neurons. Channel properties are modulated by interactions with other alpha subunits and with regulatory subunits.

## References

Note: This product is for in vitro research use only