

Fibulin 5 Antibody

Catalog No: #48547

Package Size: #48547-1 50ul #48547-2 100ul

Orders: order@signalwayantibody.comSupport: tech@signalwayantibody.com

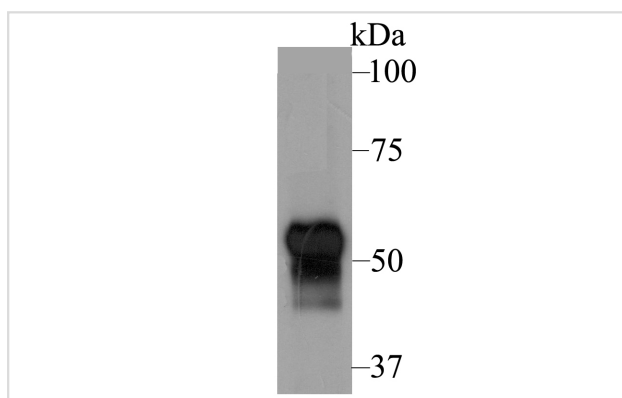
Description

| | |
|-----------------------|--|
| Product Name | Fibulin 5 Antibody |
| Host Species | Rabbit |
| Clonality | Polyclonal |
| Purification | Protein affinity purified |
| Applications | WB,ICC,IHC,FC |
| Species Reactivity | Hu, Ms, Rt |
| Immunogen Description | Recombinant protein within human Fibulin 5 210-360 aa. |
| Other Names | ADCL2 antibody ARCL1A antibody ARMD3 antibody Dance antibody Developmental arteries and neural crest EGF like protein antibody Developmental arteries and neural crest EGF-like protein antibody EVEC antibody Fbln5 antibody FBLN5_HUMAN antibody FIBL 5 antibody FIBL-5 antibody Fibulin-5 antibody FLJ90059 antibody UP50 antibody Urine p50 protein antibody |
| Accession No. | Swiss-Prot#:Q9UBX5 |
| Uniprot | Q9UBX5 |
| GeneID | 10516; |
| Calculated MW | 50 kDa |
| Formulation | 1*TBS (pH7.4), 0.5%BSA, 50%Glycerol. Preservative: 0.05% Sodium Azide. |
| Storage | Store at -20°C |

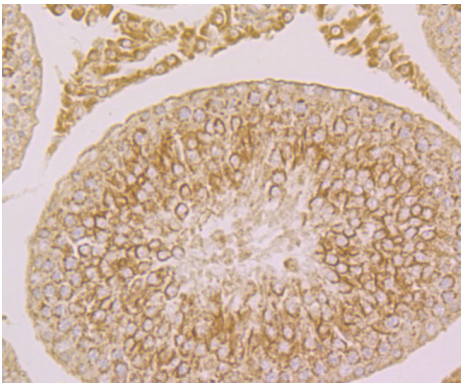
Application Details

WB: 1:1,000-1:2,000 IHC: 1:50-1:200 ICC: 1:200FC: 1:50-1:100

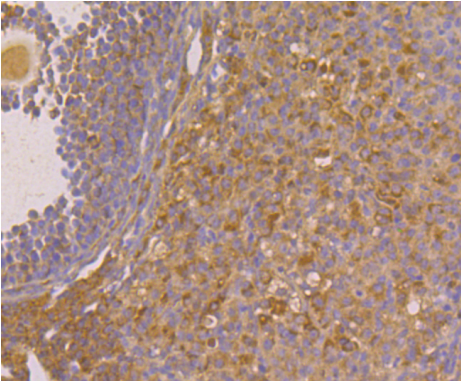
Images



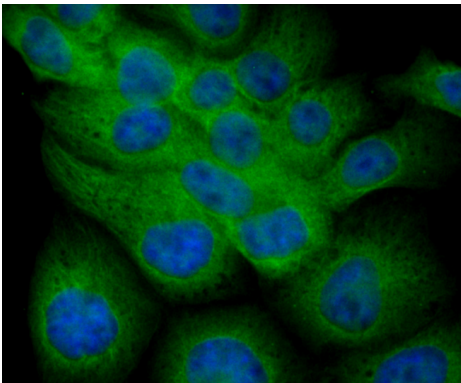
Western blot analysis of Fibulin 5 on human skin tissue lysate using anti-Fibulin 5 antibody at 1/1,000 dilution.



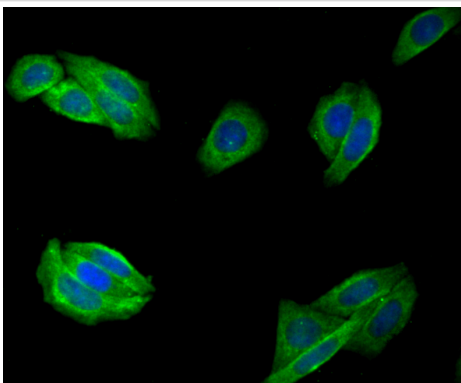
Immunohistochemical analysis of paraffin-embedded rat testis tissue using anti-Fibulin 5 antibody. Counter stained with hematoxylin.



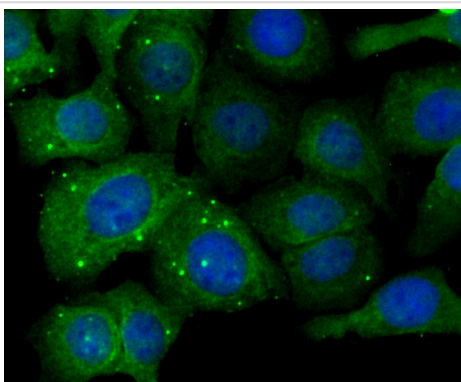
Immunohistochemical analysis of paraffin-embedded mouse ovary tissue using anti-Fibulin 5 antibody. Counter stained with hematoxylin.



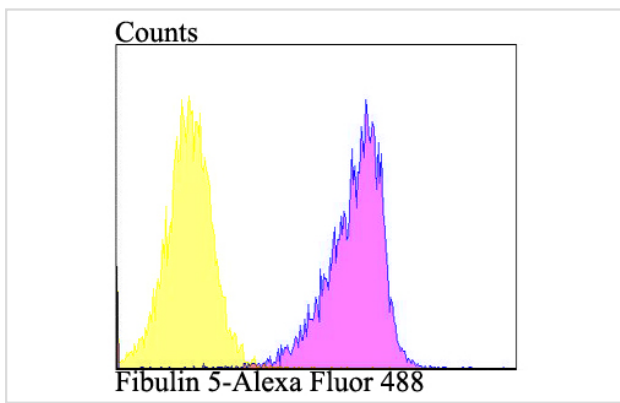
ICC staining Fibulin 5 in JAR cells (green). The nuclear counter stain is DAPI (blue). Cells were fixed in paraformaldehyde, permeabilised with 0.25% Triton X100/PBS.



ICC staining Fibulin 5 in SiHa cells (green). The nuclear counter stain is DAPI (blue). Cells were fixed in paraformaldehyde, permeabilised with 0.25% Triton X100/PBS.



ICC staining Fibulin 5 in SKOV-3 cells (green). The nuclear counter stain is DAPI (blue). Cells were fixed in paraformaldehyde, permeabilised with 0.25% Triton X100/PBS.



Flow cytometric analysis of SiHa cells with Fibulin 5 antibody at 1/100 dilution (purple) compared with an unlabelled control (cells without incubation with primary antibody; yellow). Alexa Fluor 488-conjugated goat anti-rabbit IgG was used as the secondary antibody.

Background

Fibulin proteins contribute to normal development of elastic fiber systems in various types of organs that require elasticity, such as vasculature, lung and skin. Fibulin-5 (EVEC, UP50, DANCE) is an integrin-binding extracellular matrix protein that mediates endothelial cell adhesion. Fibulin-5 is also a calcium-dependent elastin-binding protein that scaffolds cells to elastic fibers, thereby preventing elastinopathy in the skin, lung, and vasculature. The Arg-Gly-Asp (RGD) motif in Fibulin-5 interacts with cell surface integrins $\alpha v\beta 3$, $\alpha v\beta 5$ and $\alpha 9\beta 1$, serves as an anchorage for elastic fibers to cells, and promotes organization of elastic fibers. The human Fibulin-5 gene maps to chromosome 14q32.12 and encodes a 488 amino acid protein.

References

Note: This product is for in vitro research use only