

ERGI3 Antibody

Catalog No: #48549

Package Size: #48549-1 50ul #48549-2 100ul

Orders: order@signalwayantibody.com

Support: tech@signalwayantibody.com

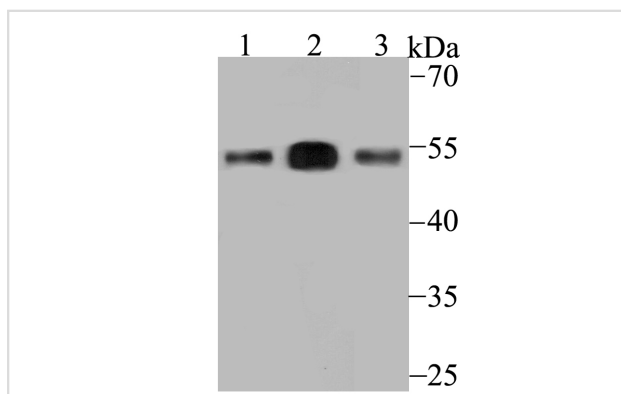
Description

| | |
|-----------------------|--|
| Product Name | ERGI3 Antibody |
| Host Species | Rabbit |
| Clonality | Polyclonal |
| Purification | Peptide affinity purified. |
| Applications | WB, ICC, IHC, FC |
| Species Reactivity | Hu, Ms, Rt |
| Immunogen Description | Synthetic peptide within C-terminal human ERGI3. |
| Other Names | 2310015B14Rik antibody AV318804 antibody C20orf47 antibody CGI 54 antibody D2Ucla1 antibody dJ477O4.2 antibody DKFZp547A2190 antibody Endoplasmic reticulum Golgi intermediate compartment protein 3 antibody endoplasmic reticulum localized protein ERp43 antibody Endoplasmic reticulum-Golgi intermediate compartment protein 3 antibody ERGI3_HUMAN antibody ERGIC and golgi 3 antibody ergic3 antibody ERV46 antibody NY BR 84 antibody PRO0989 antibody RP23-220D12.2 antibody RP3-477O4.1 antibody SDBCAG84 antibody Serologically defined breast cancer antigen 84 antibody Serologically defined breast cancer antigen NY BR 84 antibody Serologically defined breast cancer antigen NY-BR-84 antibody |
| Accession No. | Swiss-Prot#:Q9Y282 |
| Uniprot | Q9Y282 |
| GeneID | 51614; |
| Calculated MW | 55 kDa |
| Formulation | 1*TBS (pH7.4), 0.5%BSA, 50%Glycerol. Preservative: 0.05% Sodium Azide. |
| Storage | Store at -20°C |

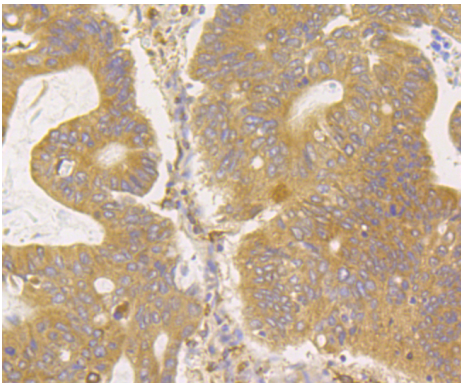
Application Details

WB: 1:500 IHC: 1:50-1:200 ICC: 1:50-1:200 FC: 1:50-1:100

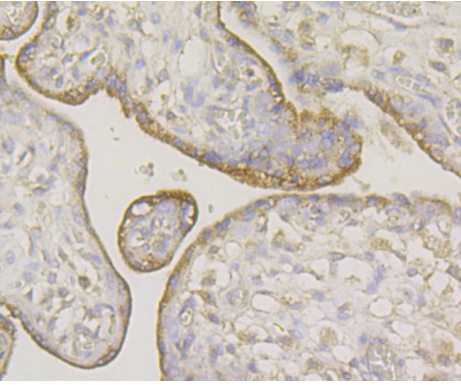
Images



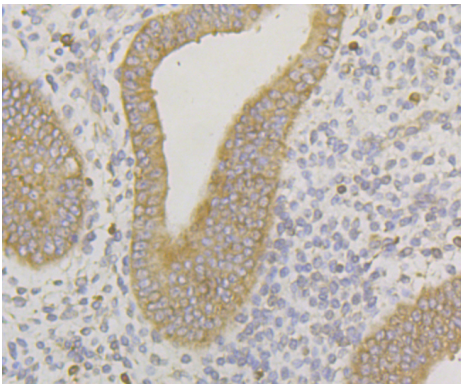
Western blot analysis of ERGI3 on different lysates using anti-ERGI3 antibody at 1/500 dilution. Positive controls: Lane 1: SiHa Lane 2: Human placenta Lane 3: Rat bone marrow



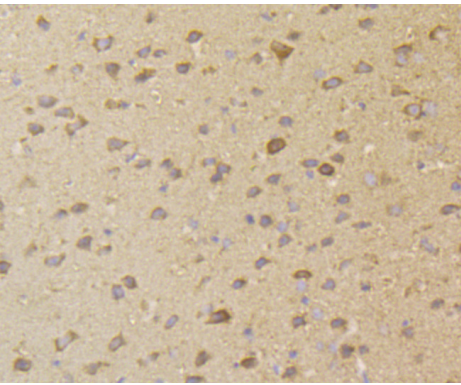
Immunohistochemical analysis of paraffin-embedded human colon cancer tissue using anti-ERG13 antibody. Counter stained with hematoxylin.



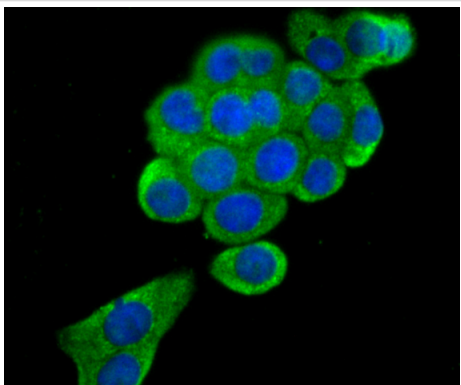
Immunohistochemical analysis of paraffin-embedded human placenta tissue using anti-ERG13 antibody. Counter stained with hematoxylin.



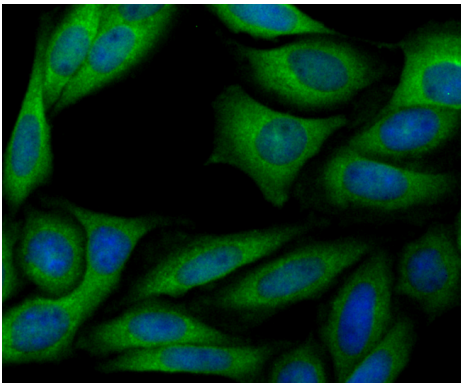
Immunohistochemical analysis of paraffin-embedded human uterus tissue using anti-ERG13 antibody. Counter stained with hematoxylin.



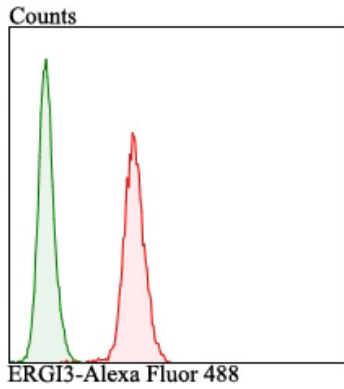
Immunohistochemical analysis of paraffin-embedded mouse brain tissue using anti-ERG13 antibody. Counter stained with hematoxylin.



ICC staining ERG13 in LOVO cells (green). The nuclear counter stain is DAPI (blue). Cells were fixed in paraformaldehyde, permeabilised with 0.25% Triton X100/PBS.



ICC staining ERG13 in SiHa cells (green). The nuclear counter stain is DAPI (blue). Cells were fixed in paraformaldehyde, permeabilised with 0.25% Triton X100/PBS.



Flow cytometric analysis of LOVO cells with ERG13 antibody at 1/100 dilution (red) compared with an unlabelled control (cells without incubation with primary antibody; green). Alexa Fluor 488-conjugated goat anti-rabbit IgG was used as the secondary antibody.

Background

Belongs to the ERGIC family. The ERGIC lies between the rough endoplasmic reticulum and Golgi on the secretory pathway. The vesicular-tubular cluster (VTC), also referred to as the ER-Golgi intermediate compartment (or ERGIC), is an organelle in eukaryotic cells. This compartment mediates trafficking between the endoplasmic reticulum and Golgi complex, facilitating the sorting of cargo. ERG13 possible role in transport between endoplasmic reticulum and Golgi.

References

Note: This product is for in vitro research use only