

RYR2 Antibody

Catalog No: #48554



Package Size: #48554-1 50ul #48554-2 100ul

Orders: order@signalwayantibody.com

Support: tech@signalwayantibody.com

Description

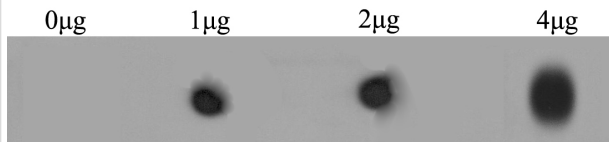
Product Name	RYR2 Antibody
Host Species	Rabbit
Clonality	Polyclonal
Purification	Peptide affinity purified.
Applications	WB,ICC,IHC,FC
Species Reactivity	Hu, Ms, Rt
Immunogen Description	Synthetic peptide within human RYR2 aa 1450-1550.
Other Names	Arrhythmogenic right ventricular dysplasia 2 antibody ARVC2 antibody ARVD2 antibody Brain ryanodine receptor calcium release channel antibody Brain type ryanodine receptor antibody Cardiac muscle ryanodine receptor calcium release channel antibody Cardiac muscle type ryanodine receptor antibody CCO antibody Central core disease of muscle antibody HBRR antibody hRYR 2 antibody hRYR2 antibody MHS antibody MHS1 antibody Ryanodine receptor 1 (skeletal) antibody Ryanodine receptor 1 antibody Ryanodine receptor 2 (cardiac) antibody Ryanodine receptor 2 antibody Ryanodine receptor 3 antibody Ryanodine receptor type1 antibody RYDR antibody RYR 1 antibody RYR 2 antibody RYR 3 antibody RYR antibody RYR-1 antibody RyR1 antibody RYR1_HUMAN antibody RYR2 antibody RYR3 antibody Sarcoplasmic reticulum calcium release channel antibody Skeletal muscle calcium release channel antibody Skeletal muscle ryanodine receptor antibody Skeletal muscle type ryanodine receptor antibody Skeletal muscle-type ryanodine receptor antibody SKRR antibody Type 1 like ryanodine receptor antibody Type 1 ryanodine receptor antibody VTSIP antibody
Accession No.	Swiss-Prot#:Q92736
Uniprot	Q92736
GeneID	6262;
Calculated MW	565 kDa
Formulation	1*TBS (pH7.4), 0.5%BSA, 50%Glycerol. Preservative: 0.05% Sodium Azide.
Storage	Store at -20°C

Application Details

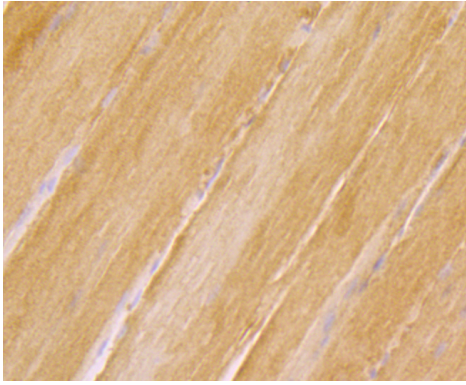
WB: 1:500IHC: 1:50-1:200ICC: 1:50-1:100FC: 1:50-1:100

Images

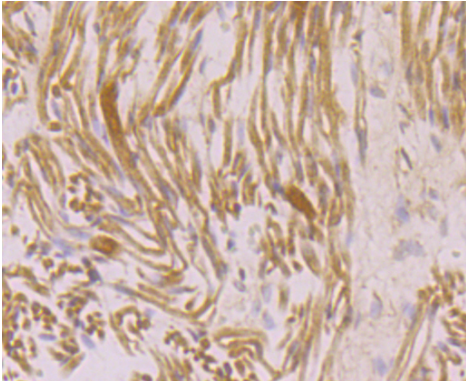
Dot blot analysis of anti-RYR2 immunization peptide on PVDF. 1 μ g, 2 μ g and 4 μ g peptides were given in this test. Anti-RYR2 antibody was diluted with 1/500.



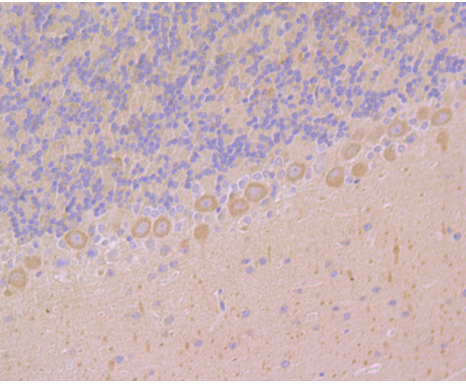
Immunohistochemical analysis of paraffin-embedded rat skeletal muscle tissue using anti-RYR2 antibody. Counter stained with hematoxylin.



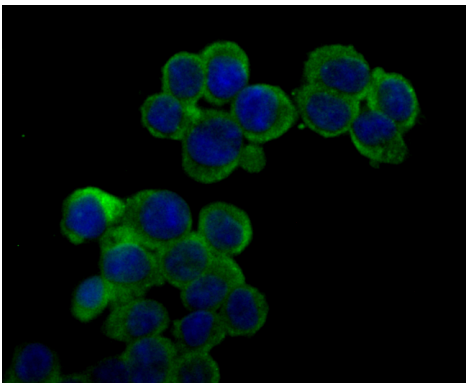
Immunohistochemical analysis of paraffin-embedded human fetal skeletal muscle tissue using anti-RYR2 antibody. Counter stained with hematoxylin.

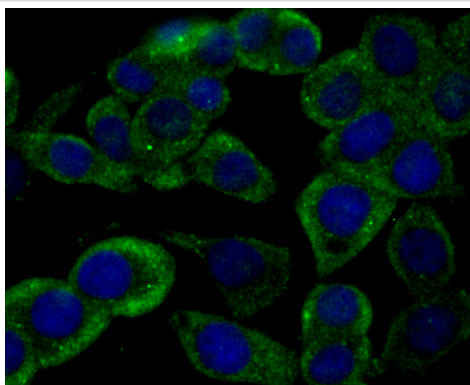


Immunohistochemical analysis of paraffin-embedded mouse cerebellum tissue using anti-RYR2 antibody. Counter stained with hematoxylin.

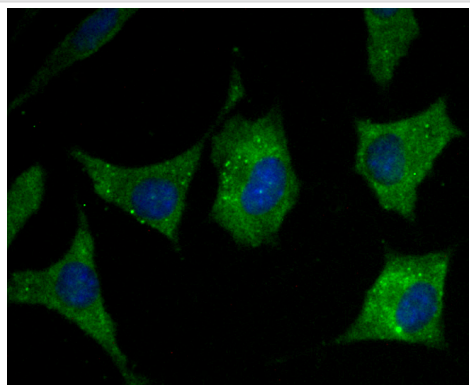


ICC staining RYR2 in 293T cells (green). The nuclear counter stain is DAPI (blue). Cells were fixed in paraformaldehyde, permeabilised with 0.25% Triton X100/PBS.

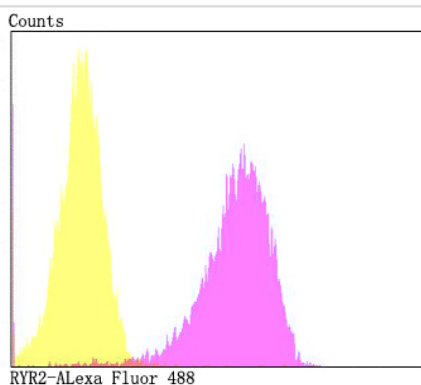




ICC staining RYR2 in LOVO cells (green). The nuclear counter stain is DAPI (blue). Cells were fixed in paraformaldehyde, permeabilised with 0.25% Triton X100/PBS.



ICC staining RYR2 in SH-SY-5Y cells (green). The nuclear counter stain is DAPI (blue). Cells were fixed in paraformaldehyde, permeabilised with 0.25% Triton X100/PBS.



Flow cytometric analysis of 293T cells with RYR2 antibody at 1/100 dilution (fuchsia) compared with an unlabelled control (cells without incubation with primary antibody; yellow). Alexa Fluor 488-conjugated goat anti-rabbit IgG was used as the secondary antibody.

Background

Calcium channel that mediates the release of Ca^{2+} from the sarcoplasmic reticulum into the cytoplasm and thereby plays a key role in triggering cardiac muscle contraction. Aberrant channel activation can lead to cardiac arrhythmia. In cardiac myocytes, calcium release is triggered by increased Ca^{2+} levels due to activation of the L-type calcium channel CACNA1C. The calcium channel activity is modulated by formation of heterotetramers with RYR3. Required for cellular calcium ion homeostasis. Required for embryonic heart development.

References

Note: This product is for in vitro research use only