

CD42b Antibody

Catalog No: #48555

Package Size: #48555-1 50ul #48555-2 100ul

Orders: order@signalwayantibody.comSupport: tech@signalwayantibody.com

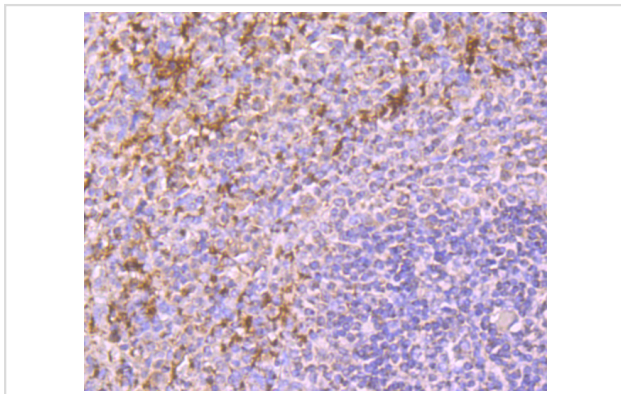
Description

Product Name	CD42b Antibody
Host Species	Rabbit
Clonality	Polyclonal
Purification	Protein affinity purified
Applications	WB,ICC,IHC,FC
Species Reactivity	Hu
Immunogen Description	Recombinant protein with human CD42b aa 130-310.
Other Names	Antigen CD42b alpha antibody BDPLT1 antibody BDPLT3 antibody BSS antibody CD 42b antibody CD42b alpha antibody CD42B antibody CD42b antigen antibody DBPLT3 antibody GLYCOCALICIN antibody Glycoprotein Ib (platelet) alpha polypeptide antibody Glycoprotein Ibalpha antibody GP Ib alpha antibody GP1B antibody GP1BA antibody GPIb alpha antibody GPIbA antibody MGC34595 antibody Platelet glycoprotein Ib alpha chain antibody Platelet glycoprotein Ib alpha polypeptide antibody Platelet membrane glycoprotein 1b alpha subunit antibody VWDP antibody
Accession No.	Swiss-Prot#:P07359
Uniprot	P07359
GeneID	2811;
Calculated MW	71 kDa (Predicted band size)
Formulation	1*TBS (pH7.4), 0.5%BSA, 50%Glycerol. Preservative: 0.05% Sodium Azide.
Storage	Store at -20°C

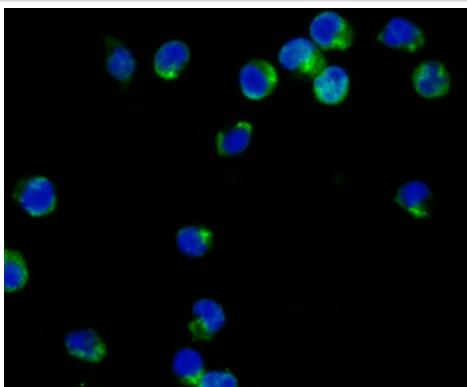
Application Details

IHC: 1:50-1:200 ICC: 1:50-1:200 FC: 1:50-1:100

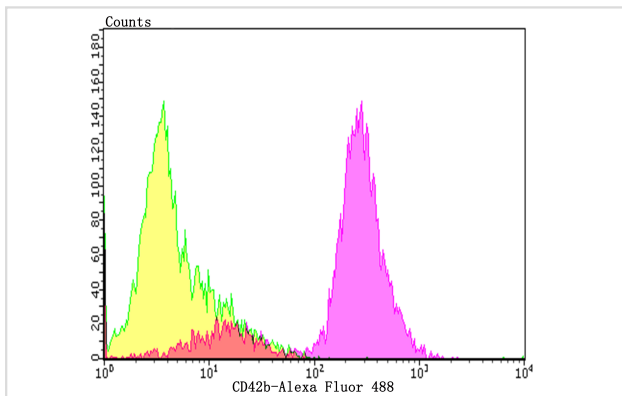
Images



Immunohistochemical analysis of paraffin-embedded human spleen tissue using anti-CD42b antibody. Counter stained with hematoxylin.



ICC staining CD42b in Jurkat cells (green). The nuclear counter stain is DAPI (blue). Cells were fixed in paraformaldehyde, permeabilised with 0.25% Triton X100/PBS.



Flow cytometric analysis of Jurkat cells with CD42b antibody at 1/50 dilution (purple) compared with an unlabelled control (cells without incubation with primary antibody; yellow). Alexa Fluor 488-conjugated goat anti-rabbit IgG was used as the secondary antibody.

Background

CD42a is a single-chain membrane glycoprotein that forms a noncovalent complex with CD42b. CD42b, also known as glycoprotein Ib a (GPIb a) is a membrane glycoprotein that is composed of a and b chains. The CD42b b chain is also designated CD42c, and is expressed on platelets and megakaryocytes. CD42a and CD42b are also present on platelets and mega-karyocytes, and the complex is a major component of the platelet surface. The complex acts as a receptor for von Willebrand's factor and as a von Willebrand's factor-dependent adhesion receptor.

References

Note: This product is for in vitro research use only