

## TGF-Beta 1 Antibody

Catalog No: #48569



Package Size: #48569-1 50ul #48569-2 100ul

Orders: [order@signalwayantibody.com](mailto:order@signalwayantibody.com)Support: [tech@signalwayantibody.com](mailto:tech@signalwayantibody.com)

## Description

Product Name	TGF-Beta 1 Antibody
Clonality	Monoclonal
Purification	Protein A affinity purified.
Applications	WB, IHC-P, IF-Tissue
Species Reactivity	Human, Mouse, Rat
Immunogen Description	Synthetic peptide (KLH-coupled) corresponding to Human TGF-Beta 1
Other Names	Cartilage-inducing factor antibody CED antibody Differentiation inhibiting factor antibody DPD1 antibody LAP antibody Latency-associated peptide antibody Prepro transforming growth factor beta 1 antibody TGF beta 1 antibody TGF beta antibody TGF beta 1 protein antibody TGF-beta 1 protein antibody TGF-beta-1 antibody TGF-beta-5 antibody TGF-beta1 antibody TGFB antibody Tgfb-1 antibody tgf1 antibody TGFB1_HUMAN antibody TGFbeta antibody TGFbeta1 antibody Transforming Growth Factor b1 antibody Transforming Growth Factor beta 1 antibody Transforming growth factor beta 1a antibody transforming growth factor beta-1 antibody transforming growth factor, beta 1 antibody Transforming Growth Factor-?1 antibody
Accession No.	Swiss-Prot#:P01137
Uniprot	P01137
GeneID	7040;
Calculated MW	44 kDa
Concentration	1 mg/ml
Formulation	PBS (pH7.4), 0.1% BSA, 40% Glycerol. Preservative: 0.05% Sodium Azide.
Storage	Store at +4°C after thawing. Aliquot store at -20°C. Avoid repeated freeze / thaw cycles.

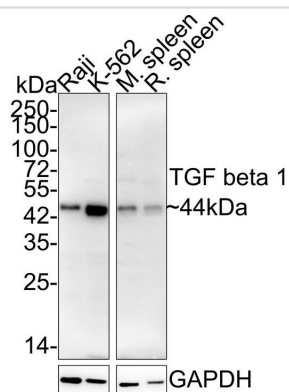
## Application Details

WB 1:2,000

IHC-P 1:200

IF-Tissue 1:200

## Images



Western blot analysis of TGF beta 1 on different lysates with Rabbit anti-TGF beta 1 antibody at 1/2,000 dilution.

Lane 1: Raji cell lysate (15 µg/Lane)

Lane 2: K-562 cell lysate (15 µg/Lane)

Lane 3: Mouse spleen tissue lysate (20 µg/Lane)

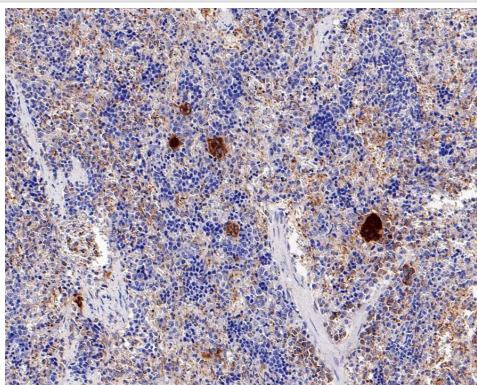
Lane 4: Rat spleen tissue lysate (20 µg/Lane)

Predicted band size: 44 kDa

Observed band size: 44 kDa

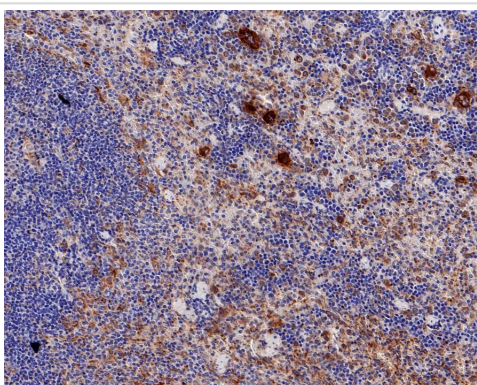
Exposure time: 3 minutes 54 seconds;

4-20% SDS-PAGE gel.



Immunohistochemical analysis of paraffin-embedded rat spleen tissue with Rabbit anti-TGF beta 1 antibody at 1/200 dilution.

The section was pre-treated using heat mediated antigen retrieval with Tris-EDTA buffer (pH 9.0) for 20 minutes. The tissues were blocked in 1% BSA for 20 minutes at room temperature, washed with ddH<sub>2</sub>O and PBS, and then probed with the primary antibody at 1/200 dilution for 1 hour at room temperature. The detection was performed using an HRP conjugated compact polymer system. DAB was used as the chromogen. Tissues were counterstained with hematoxylin and mounted with DPX.



Immunohistochemical analysis of paraffin-embedded mouse spleen tissue with Rabbit anti-TGF beta 1 antibody at 1/200 dilution.

The section was pre-treated using heat mediated antigen retrieval with Tris-EDTA buffer (pH 9.0) for 20 minutes. The tissues were blocked in 1% BSA for 20 minutes at room temperature, washed with ddH<sub>2</sub>O and PBS, and then probed with the primary antibody at 1/200 dilution for 1 hour at room temperature. The detection was performed using an HRP conjugated compact polymer system. DAB was used as the chromogen. Tissues were counterstained with hematoxylin and mounted with DPX.

## Background

Many cells synthesize TGFB1 and have specific receptors for it. It positively and negatively regulates many other growth factors. It plays an important role in bone remodeling as it is a potent stimulator of osteoblastic bone formation, causing chemotaxis, proliferation and differentiation in committed osteoblasts. Heterodimers of TGFB1/TGFB2 have been found in bone. Interacts with CD109 and DPT. Interacts with ASPN. Function: TGF beta 2 has suppressive effects on interleukin-2 dependent T-cell growth. Tissue specificity: TGF beta 1 is highly expressed in bone. A chromosomal aberration involving TGFB2 is found in a family with Peters anomaly.

Note: This product is for in vitro research use only