

Stat3 Polyclonal Antibody

Catalog No: #41465

Package Size: #41465-1 50ul #41465-2 100ul

Orders: order@signalwayantibody.comSupport: tech@signalwayantibody.com

Description

Product Name	Stat3 Polyclonal Antibody
Host Species	Rabbit
Clonality	Polyclonal
Purification	The antibody was affinity-purified from rabbit antiserum by affinity-chromatography using epitope-specific immunogen.
Applications	WB IHC IF ELISA
Species Reactivity	Hu Ms Rt
Specificity	Stat3 Polyclonal Antibody detects endogenous levels of Stat3 protein.
Immunogen Type	peptide
Immunogen Description	Synthesized peptide derived from human Stat3 around the non-phosphorylation site of S727.
Target Name	Stat3
Other Names	STAT3; APRF; Signal transducer and activator of transcription 3; Acute-phase response factor
Accession No.	Swiss-Prot: P40763NCBI Gene ID: 6774
Uniprot	P40763
GeneID	6774;
SDS-PAGE MW	88kd
Concentration	1mg/ml
Formulation	Liquid in PBS containing 50% glycerol, 0.5% BSA and 0.02% sodium azide.
Storage	Store at -20°C/1 year

Application Details

Western Blot: 1/500 - 1/2000.

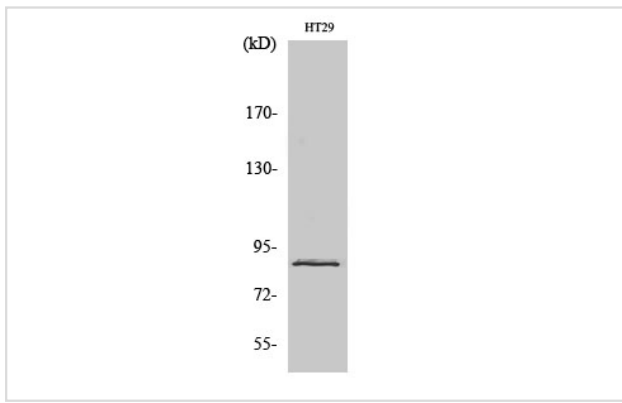
Immunohistochemistry: 1/100 - 1/300.

Immunofluorescence: 1/200 - 1/1000.

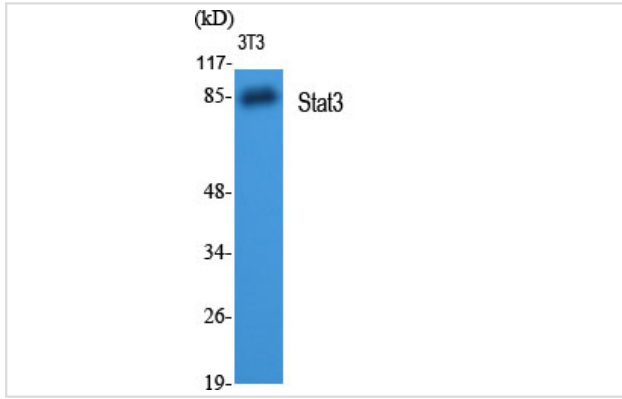
ELISA: 1/10000.

Not yet tested in other applications.

Images



Western Blot analysis of NIH-3T3 cells using Stat3 Polyclonal Antibody



Western Blot analysis of NIH-3T3 cells using Stat3 Polyclonal Antibody

Note: This product is for in vitro research use only