

## CD31 Antibody

Catalog No: #48573

Package Size: #48573-1 50ul #48573-2 100ul

Orders: [order@signalwayantibody.com](mailto:order@signalwayantibody.com)Support: [tech@signalwayantibody.com](mailto:tech@signalwayantibody.com)

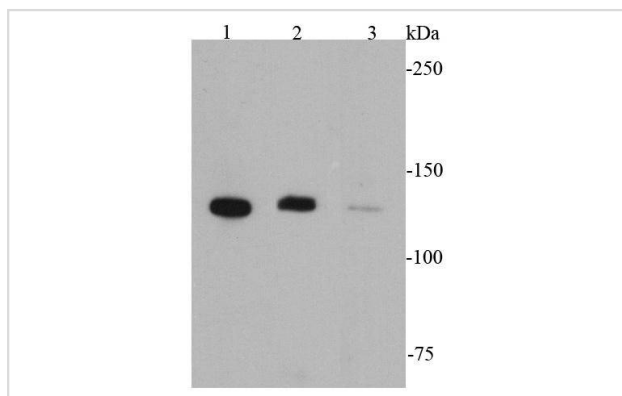
## Description

Product Name	CD31 Antibody
Host Species	Rabbit
Clonality	Polyclonal
Purification	Peptide affinity purified
Applications	WB, ICC, IHC, FC
Species Reactivity	Hu, Ms
Immunogen Description	This antibody is produced by immunizing rabbits with a synthetic peptide (KLH-coupled) corresponding to C-terminal residues of human CD31.
Other Names	Adhesion molecule antibody CD31 antibody CD31 antigen antibody CD31 EndoCAM antibody EndoCAM antibody FLJ34100 antibody FLJ58394 antibody GPIIA antibody GPIIA' antibody PECA1 antibody PECA1_HUMAN antibody Pecam 1 antibody PECAM 1 CD31 EndoCAM antibody PECAM antibody PECAM-1 antibody Pecam1 antibody Platelet and endothelial cell adhesion molecule 1 antibody Platelet endothelial cell adhesion molecule antibody Platelet/endothelial cell adhesion molecule 1 antibody
Accession No.	Swiss-Prot#:P16284
Uniprot	P16284
GeneID	5175;
Calculated MW	82 kDa (Observed: 130 kDa)
Formulation	1*TBS (pH7.4), 1%BSA, 40%Glycerol. Preservative: 0.05% Sodium Azide.
Storage	Store at -20°C

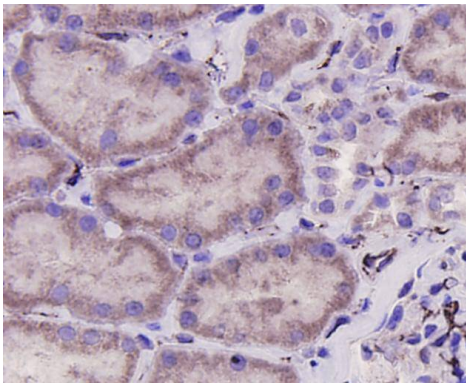
## Application Details

WB: 1:1,000 IHC: 1:200 ICC: 1:200 FC: 1:100-1:200

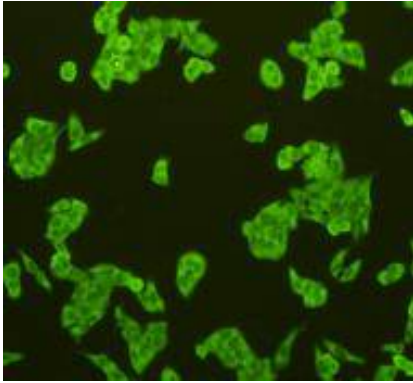
## Images



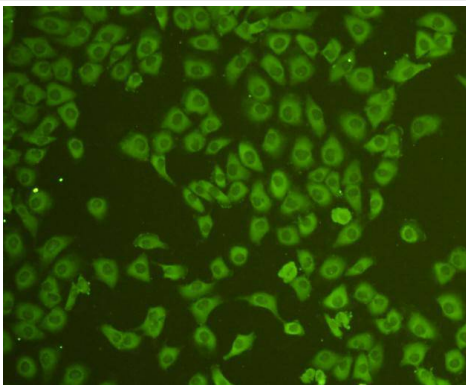
Western blot analysis of CD31 on different cell lysates using anti-CD31 antibody at 1/1000 dilution.



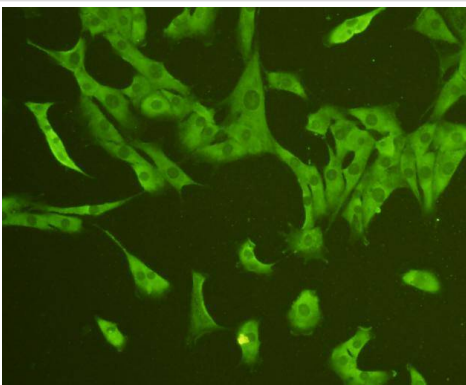
Immunohistochemical analysis of paraffin-embedded human kidney tissue using anti-CD31 antibody. Counter stained with hematoxylin.



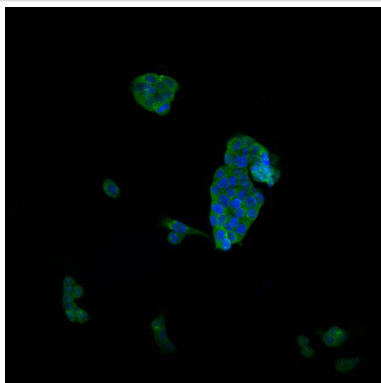
ICC staining CD31 in Hela cells (green). Cells were fixed in paraformaldehyde, permeabilised with 0.25% Triton X100/PBS.



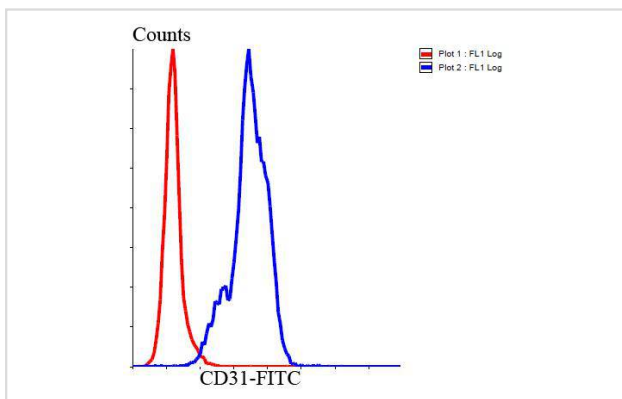
ICC staining CD31 in HUVEC cells (green). Cells were fixed in paraformaldehyde, permeabilised with 0.25% Triton X100/PBS.



ICC staining CD31 in NIH/3T3 cells (green). Cells were fixed in paraformaldehyde, permeabilised with 0.25% Triton X100/PBS.



ICC staining CD31 in SW480 cells (green). Cells were fixed in paraformaldehyde, permeabilised with 0.25% Triton X100/PBS.



Flow cytometric analysis of Jurkat cells with CD31 antibody at 1/100 dilution (blue) compared with an unlabelled control (cells without incubation with primary antibody; red). Goat anti rabbit IgG (FITC) was used as the secondary antibody.

## Background

PECAM-1 is found on the surface of platelets, monocytes, neutrophils, and some types of T-cells, and makes up a large portion of endothelial cell intercellular junctions. The encoded protein is a member of the immunoglobulin superfamily and is likely involved in leukocyte transmigration, angiogenesis, and integrin activation. CD31 is also expressed in certain tumors, including epithelioid hemangioendothelioma, epithelioid sarcoma-like hemangioendothelioma, other vascular tumors, histiocytic malignancies, and plasmacytomas. It is rarely found in some sarcomas, such as Kaposi's sarcoma and carcinomas. In immunohistochemistry, CD31 is used primarily to demonstrate the presence of endothelial cells in histological tissue sections. This can help to evaluate the degree of tumour angiogenesis, which can imply a rapidly growing tumor

## References

Note: This product is for in vitro research use only