

STAT6 Antibody

Catalog No: #48579

Package Size: #48579-1 50ul #48579-2 100ul

Orders: order@signalwayantibody.com

Support: tech@signalwayantibody.com

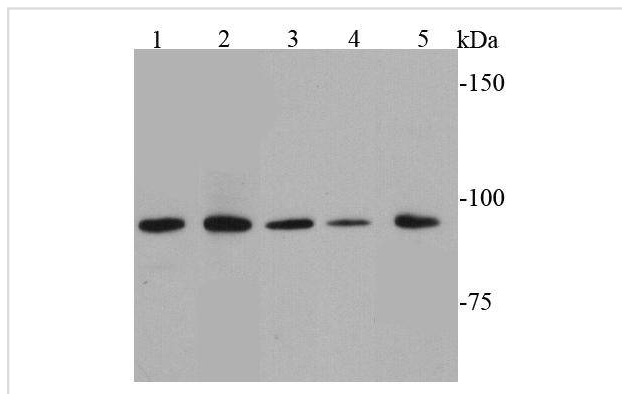
Description

Product Name	STAT6 Antibody
Host Species	Rabbit
Clonality	Polyclonal
Purification	Peptide affinity purified
Applications	WB, ICC, IHC, FC
Species Reactivity	Hu
Immunogen Description	peptide
Other Names	12S1644 antibody D12S1644 antibody IL 4 STAT antibody IL-4 Stat antibody IL4 STAT antibody Interleukin 4 Induced antibody Interleukin 4 Induced Transcription Factor IL4 STAT antibody Signal transducer and activator of transcription 6 antibody Signal Transducer And Activator Of Transcription 6 Interleukin 4 Induced antibody Signal Transducer And Activator Of Transcription 6 Nirs Variant 1 antibody Signal transducer and activator of transcription 6, interleukin 4 induced antibody STAT 6 antibody STAT interleukin4 induced antibody STAT, interleukin4 induced antibody Stat6 antibody STAT6_HUMAN antibody STAT6B antibody STAT6C antibody Transcription factor IL 4 STAT antibody
Accession No.	Swiss-Prot#:P42226
Uniprot	P42226
GeneID	6778;
Calculated MW	94 kDa
Formulation	1*TBS (pH7.4), 1%BSA, 40%Glycerol. Preservative: 0.05% Sodium Azide.
Storage	Store at -20°C

Application Details

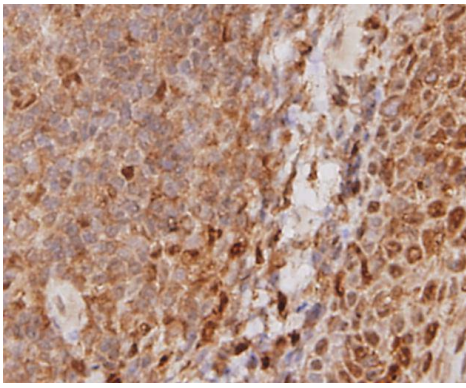
WB: 1:1,000 IHC: 1:200 ICC: 1:200 FC: 1:100-1:200

Images

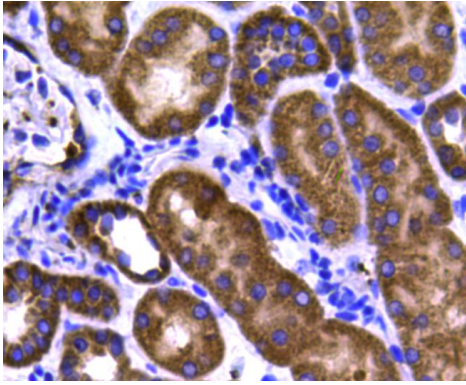


Western blot analysis of STAT6 on different cell lysates using anti-STAT6 antibody at 1/1000 dilution. Positive control:

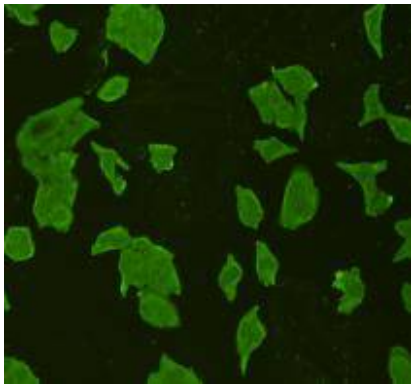
Lane 1: Raji
 Lane 2: Daudi
 Lane 3: Hela
 Lane 4: Ags
 Lane 5: Jurkat



Immunohistochemical analysis of paraffin-embedded human tonsil tissue using anti-STAT6 antibody. Counter stained with hematoxylin.



Immunohistochemical analysis of paraffin-embedded human kidney tissue using anti-STAT6 antibody. Counter stained with hematoxylin.



ICC staining STAT6 in HeLa cells (green). Cells were fixed in paraformaldehyde, permeabilised with 0.25% Triton X100/PBS.

Background

In response to cytokines and growth factors, STAT family members are phosphorylated by the receptor associated kinases, and then form homo- or heterodimers that translocate to the cell nucleus where they act as transcription activators. This protein STAT6 plays a central role in exerting IL4 mediated biological responses. It is found to induce the expression of BCL2L1/BCL-X(L), which is responsible for the anti-apoptotic activity of IL4. Knockout studies in mice suggested the roles of this gene in differentiation of T helper 2 (Th2), expression of cell surface markers, and class switch of immunoglobulins.

References

Note: This product is for in vitro research use only