

## CD3 epsilon Antibody

Catalog No: #48594

Package Size: #48594-1 50ul #48594-2 100ul

Orders: order@signalwayantibody.com

Support: tech@signalwayantibody.com

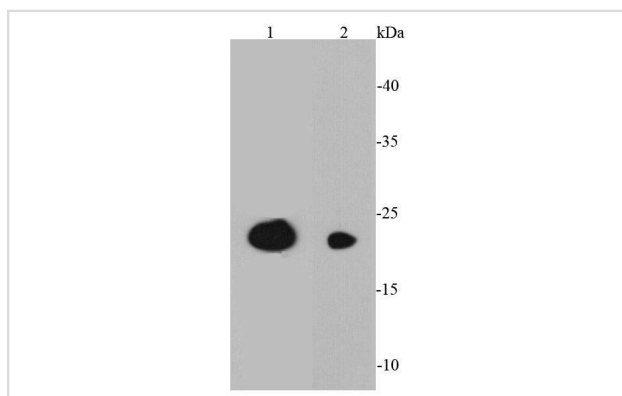
## Description

Product Name	CD3 epsilon Antibody
Host Species	Rabbit
Clonality	Polyclonal
Purification	Peptide affinity purified
Applications	WB, ICC, IHC, FC
Species Reactivity	Hu, Ms
Immunogen Description	This antibody is produced by immunizing rabbits with a synthetic peptide (KLH-coupled) corresponding to N-terminal residues of CD3 epsilon.
Other Names	CD3 epsilon antibody CD3e antibody CD3e antigen epsilon polypeptide (TiT3 complex) antibody CD3E antigen epsilon polypeptide antibody CD3E antigen, epsilon subunit antibody CD3e molecule epsilon antibody CD3e molecule, epsilon (CD3 TCR complex) antibody CD3e molecule, epsilon (CD3-TCR complex) antibody CD3E_HUMAN antibody IMD18 antibody T cell antigen receptor complex epsilon subunit of T3 antibody T cell surface antigen T3/Leu 4 epsilon chain antibody T cell surface glycoprotein CD3 epsilon chain antibody T-cell surface antigen T3/Leu-4 epsilon chain antibody T-cell surface glycoprotein CD3 epsilon chain antibody T3E antibody TCRE antibody
Accession No.	Swiss-Prot#:P07766
Uniprot	P07766
GeneID	916;
Calculated MW	23 kDa
Formulation	1*TBS (pH7.4), 1%BSA, 40%Glycerol. Preservative: 0.05% Sodium Azide.
Storage	Store at -20°C

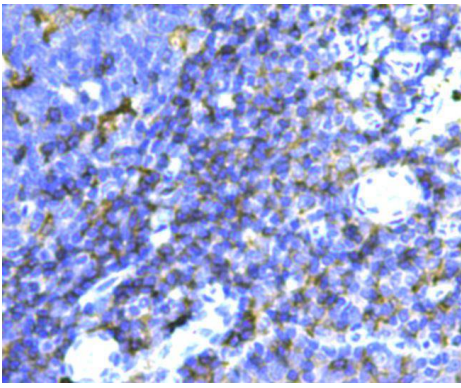
## Application Details

WB: 1:1,000 IHC: 1:200 ICC: 1:200 FC: 1:100-1:200

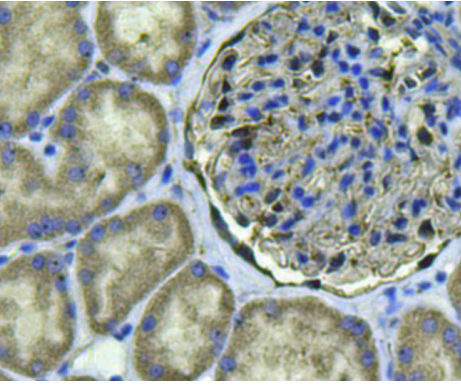
## Images



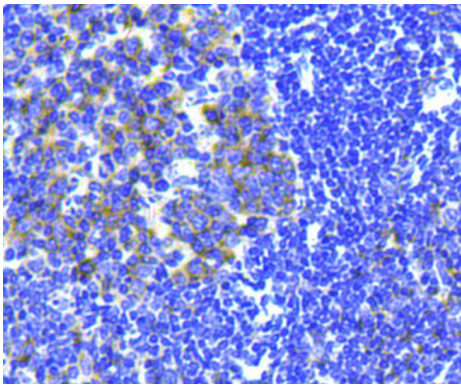
Western blot analysis of CD3E on different cell lysates using anti-CD3E antibody at 1/1000 dilution.



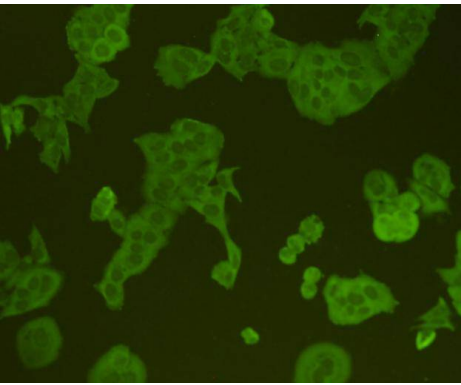
Immunohistochemical analysis of paraffin-embedded human tonsil tissue using anti-CD3E antibody. Counter stained with hematoxylin.



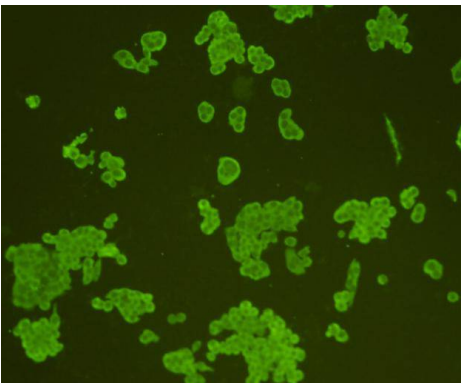
Immunohistochemical analysis of paraffin-embedded human kidney tissue using anti-CD3E antibody. Counter stained with hematoxylin.



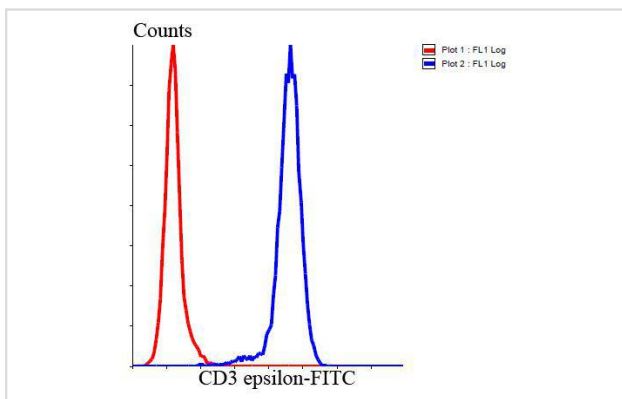
Immunohistochemical analysis of paraffin-embedded mouse spleen tissue using anti-CD3E antibody. Counter stained with hematoxylin.



ICC staining CD3E in Hela cells (green). Cells were fixed in paraformaldehyde, permeabilised with 0.25% Triton X100/PBS.



ICC staining CD3E in Lovo cells (green). Cells were fixed in paraformaldehyde, permeabilised with 0.25% Triton X100/PBS.



Flow cytometric analysis of Jurkat cells with CD3E antibody at 1/100 dilution (blue) compared with an unlabelled control (cells without incubation with primary antibody; red). Goat anti rabbit IgG (FITC) was used as the secondary antibody.

## Background

CD3 is composed of five invariant polypeptide chains that associate to form three dimers. The five invariant chains of CD3 are labeled gamma, delta, epsilon, zeta, and eta. Each of these polypeptides contains at least one immunoreceptor tyrosine-based activation motif (ITAM). These chains associate with the T cell receptor (TCR) and the  $\zeta$ -chain to generate an activation signal in T lymphocytes.

## References

Note: This product is for in vitro research use only