

## CREB Rabbit mAb

Catalog No: #48601

Package Size: #48601-1 50ul #48601-2 100ul

Orders: order@signalwayantibody.com

Support: tech@signalwayantibody.com

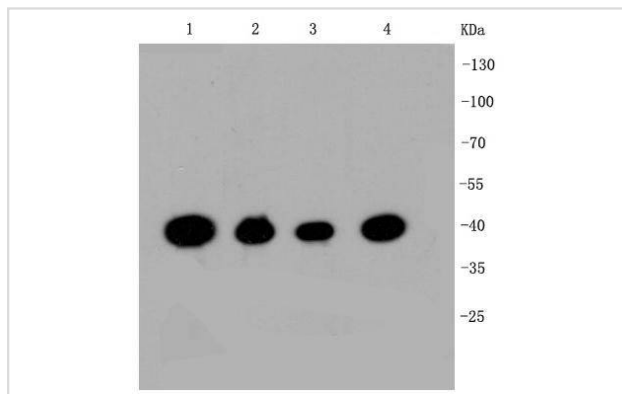
## Description

Product Name	CREB Rabbit mAb
Host Species	Recombinant Rabbit
Clonality	Monoclonal antibody
Clone No.	SA04-04
Purification	ProA affinity purified
Applications	WB, ICC/IF, IHC, IP, FC
Species Reactivity	Hu, Ms, Rt, zebrafish
Immunogen Description	recombinant protein
Other Names	Active transcription factor CREB antibody cAMP response element binding protein 1 antibody cAMP response element binding protein antibody cAMP responsive element binding protein 1 antibody cAMP-responsive element-binding protein 1 antibody CREB antibody CREB-1 antibody CREB1 antibody CREB1_HUMAN antibody Cyclic AMP-responsive element-binding protein 1 antibody MGC9284 antibody OTTHUMP00000163864 antibody OTTHUMP00000163865 antibody OTTHUMP00000206660 antibody OTTHUMP00000206662 antibody OTTHUMP00000206667 antibody Transactivator protein antibody
Accession No.	Swiss-Prot#:P16220
Uniprot	P16220
GeneID	1385;
Calculated MW	40 kDa
Formulation	1*TBS (pH7.4), 1%BSA, 40%Glycerol. Preservative: 0.05% Sodium Azide.
Storage	Store at -20°C

## Application Details

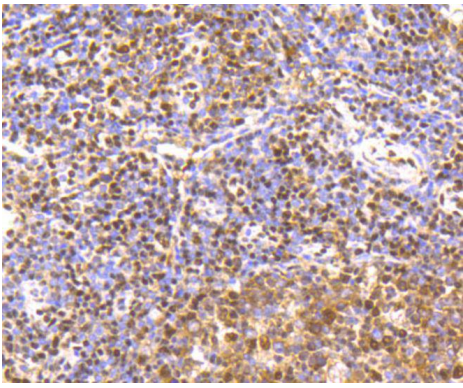
WB: 1:1,000-5,000 IHC: 1:50-1:200 ICC: 1:50-1:200 FC: 1:10-1:100

## Images

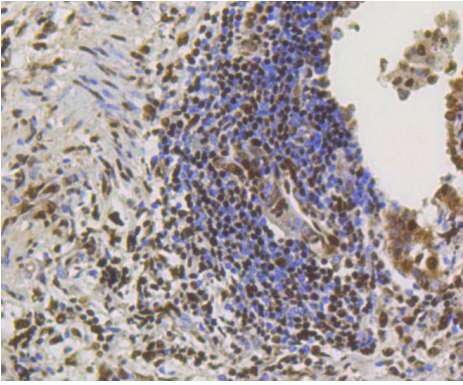


Western blot analysis of CREB on different cell lysates using anti-CREB antibody at 1/1,000 dilution. Positive control:

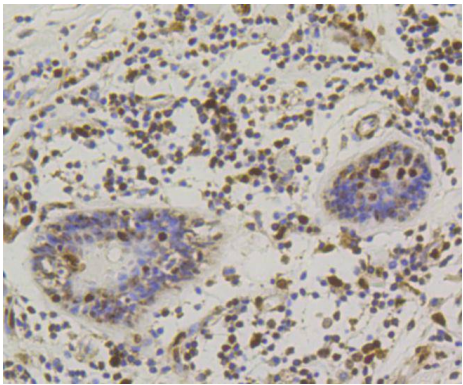
Lane 1: HeLa  
 Lane 2: HepG2  
 Lane 3: Jurkat  
 Lane 4: NIH/3T3



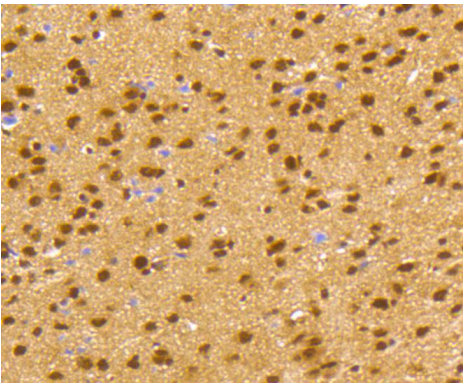
Immunohistochemical analysis of paraffin-embedded human tonsil tissue using anti-CREB antibody. Counter stained with hematoxylin.



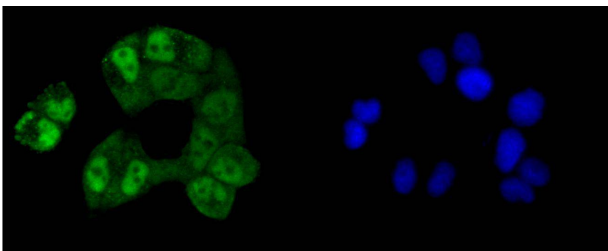
Immunohistochemical analysis of paraffin-embedded human lung cancer tissue using anti-CREB antibody. Counter stained with hematoxylin.



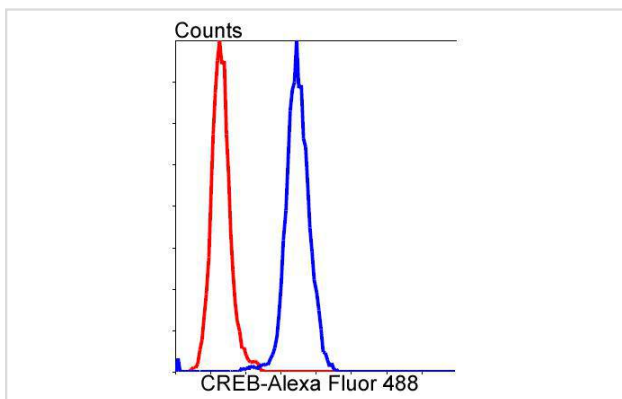
Immunohistochemical analysis of paraffin-embedded human breast carcinoma tissue using anti-CREB antibody. Counter stained with hematoxylin.



Immunohistochemical analysis of paraffin-embedded mouse brain tissue using anti-CREB antibody. Counter stained with hematoxylin.



ICC staining CREB in HeLa cells (green). The nuclear counter stain is DAPI (blue). Cells were fixed in paraformaldehyde, permeabilised with 0.25% Triton X100/PBS.



Flow cytometric analysis of HeLa cells with CREB antibody at 1/50 dilution (blue) compared with an unlabelled control (cells without incubation with primary antibody; red). Alexa Fluor 488-conjugated goat anti rabbit IgG was used as the secondary antibody.

## Background

Eukaryotic gene transcription is regulated by sequence-specific transcription factors that bind modular cis-acting promoter and enhancer elements. The ATF/CREB transcription factor family binds the palindromic cAMP response element (CRE) octanucleotide TGACGTCA. The ATF/CREB family includes CREB-1, CREB-2 (also designated ATF-4), ATF-1, ATF-2 and ATF-3. This family of proteins contains highly divergent N-terminal domains, but shares a C-terminal leucine zipper for dimerization and DNA binding. Although CREB can bind to DNA in an unphosphorylated state, it cannot activate transcription. Phosphorylation of CREB on Ser 133 by protein kinase A facilitates its interaction with the CREB-binding protein (CBP) and activates the basal transcription complex. CREB functions in neoglucogenesis through interactions with the nuclear coactivator PGC-1. CREB may play a role in the pathogenesis of type II diabetes and dilated cardiomyopathy.

## References

Note: This product is for in vitro research use only