

## MMP-3 Polyclonal Antibody

Catalog No: #41468

Package Size: #41468-1 50ul #41468-2 100ul

Orders: [order@signalwayantibody.com](mailto:order@signalwayantibody.com)Support: [tech@signalwayantibody.com](mailto:tech@signalwayantibody.com)

## Description

Product Name	MMP-3 Polyclonal Antibody
Host Species	Rabbit
Clonality	Polyclonal
Purification	The antibody was affinity-purified from rabbit antiserum by affinity-chromatography using epitope-specific immunogen.
Applications	WB IHC IF ELISA
Species Reactivity	Hu Ms Rt
Specificity	MMP-3 Polyclonal Antibody detects endogenous levels of MMP-3 protein.
Immunogen Type	peptide
Immunogen Description	Synthesized peptide derived from the C-terminal region of human MMP-3.
Target Name	MMP-3
Other Names	MMP3; STMY1; Stromelysin-1; SL-1; Matrix metalloproteinase-3; MMP-3; Transin-1
Accession No.	Swiss-Prot: P08254NCBI Gene ID: 4314
Uniprot	P08254
GeneID	4314;
SDS-PAGE MW	53kd
Concentration	1mg/ml
Formulation	Liquid in PBS containing 50% glycerol, 0.5% BSA and 0.02% sodium azide.
Storage	Store at -20°C/1 year

## Application Details

Western Blot: 1/500 - 1/2000.

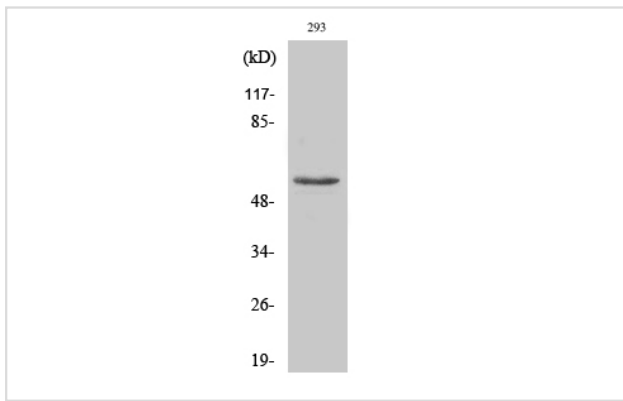
Immunohistochemistry: 1/100 - 1/300.

Immunofluorescence: 1/200 - 1/1000.

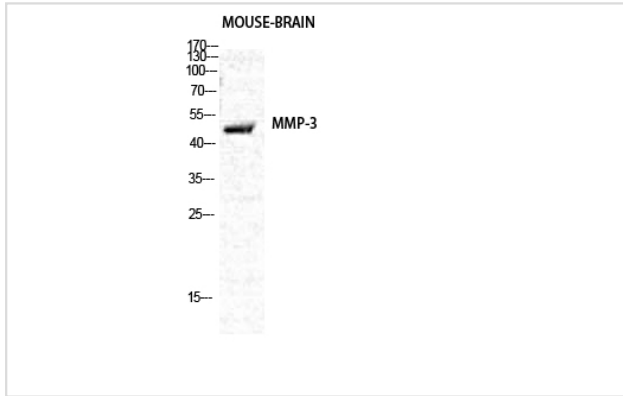
ELISA: 1/10000.

Not yet tested in other applications.

## Images



Western Blot analysis of 293 cells using MMP-3 Polyclonal Antibody



Western Blot analysis of MOUSE-BRAIN cells using MMP-3 Polyclonal Antibody

---

Note: This product is for in vitro research use only