

GAPDH Rabbit mAb

Catalog No: #48620



Package Size: #48620-1 50ul #48620-2 100ul

Orders: order@signalwayantibody.com

Support: tech@signalwayantibody.com

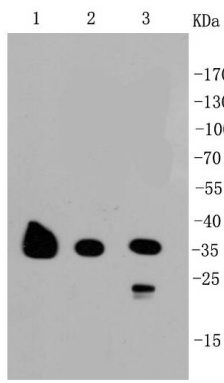
Description

Product Name	GAPDH Rabbit mAb
Host Species	Recombinant Rabbit
Clonality	Monoclonal antibody
Clone No.	1-G2
Purification	ProA affinity purified
Applications	WB, ICC/IF, IHC, IP, FC
Species Reactivity	Hu, Ms, Rt, Monkey, Chicken, zebrafish
Immunogen Description	recombinant protein
Other Names	38 kDa BFA-dependent ADP-ribosylation substrate antibody aging associated gene 9 protein antibody Aging-associated gene 9 protein antibody BARS-38 antibody cb609 antibody EC 1.2.1.12 antibody Epididymis secretory sperm binding protein Li 162eP antibody G3P_HUMAN antibody G3PD antibody G3PDH antibody GAPD antibody GAPDH antibody Glyceraldehyde 3 phosphate dehydrogenase antibody Glyceraldehyde-3-phosphate dehydrogenase antibody HEL-S-162eP antibody KNC-NDS6 antibody MGC102544 antibody MGC102546 antibody MGC103190 antibody MGC103191 antibody MGC105239 antibody MGC127711 antibody MGC88685 antibody OCAS, p38 component antibody OCT1 coactivator in S phase, 38-KD component antibody peptidyl cysteine S nitrosylase GAPDH antibody Peptidyl-cysteine S-nitrosylase GAPDH antibody wu:fb33a10 antibody
Accession No.	Swiss-Prot#:P04406
Uniprot	P04406
GeneID	2597;
Calculated MW	36 kDa
Formulation	1*TBS (pH7.4), 1%BSA, 40%Glycerol. Preservative: 0.05% Sodium Azide.
Storage	Store at -20°C

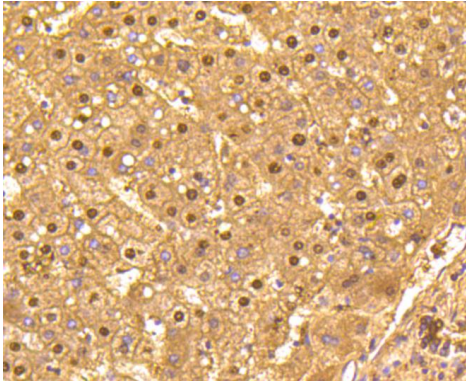
Application Details

WB: 1:1,000-5,000 IHC: 1:50-1:200 ICC: 1:50-1:200 FC: 1:10-1:100

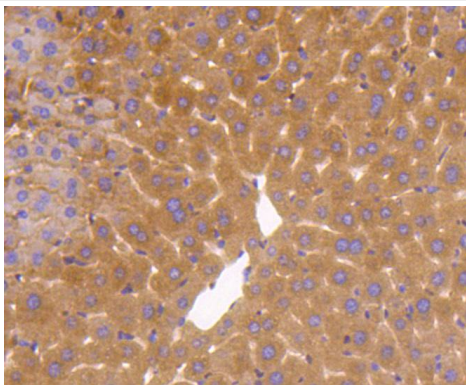
Images



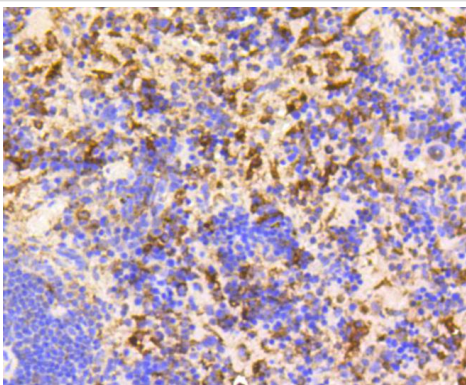
Western blot analysis of GAPDH on different cell lysates using anti-GAPDH antibody at 1/1,000 dilution. Positive control: Lane 1: NCCIT, Lane 2: PC12, Lane 3: F9



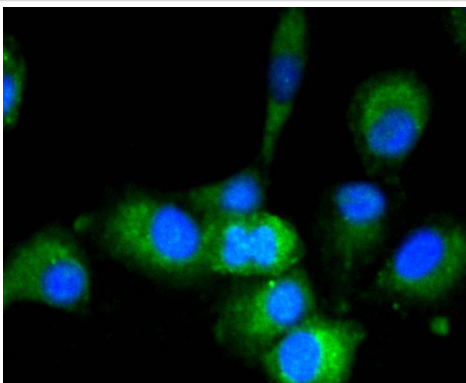
Immunohistochemical analysis of paraffin-embedded human liver tissue using anti-GAPDH antibody. Counter stained with hematoxylin.



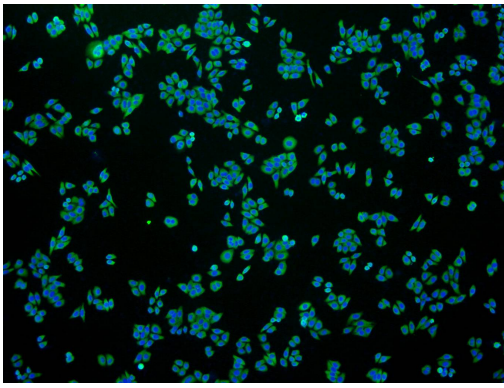
Immunohistochemical analysis of paraffin-embedded mouse liver tissue using anti-GAPDH antibody. Counter stained with hematoxylin.



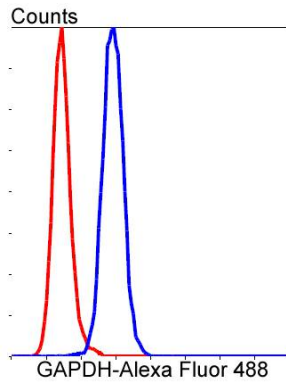
Immunohistochemical analysis of paraffin-embedded mouse spleen tissue using anti-GAPDH antibody. Counter stained with hematoxylin.



ICC staining GAPDH in A549 cells (green). The nuclear counter stain is DAPI (blue). Cells were fixed in paraformaldehyde, permeabilised with 0.25% Triton X100/PBS.



ICC staining GAPDH in HepG2 cells (green). The nuclear counter stain is DAPI (blue). Cells were fixed in paraformaldehyde, permeabilised with 0.25% Triton X100/PBS.



Flow cytometric analysis of HepG2 cells with GAPDH antibody at 1/50 dilution (blue) compared with an unlabelled control (cells without incubation with primary antibody; red). Alexa Fluor 488-conjugated goat anti-rabbit IgG was used as the secondary antibody.

Background

GAPDH (Glyceraldehyde-3-phosphate dehydrogenase) has both glyceraldehyde-3-phosphate dehydrogenase and nitrosylase activities, thereby playing a role in glycolysis and nuclear functions, respectively. It participates in nuclear events including transcription, RNA transport, DNA replication and apoptosis. GAPDH is a key enzyme in glycolysis that catalyzes the first step of the pathway by converting D-glyceraldehyde 3-phosphate (G3P) into 3-phospho-D-glyceroyl phosphate.

References

Note: This product is for in vitro research use only