

## Synapsin I Polyclonal Antibody

Catalog No: #41470



Package Size: #41470-1 50ul #41470-2 100ul

Orders: [order@signalwayantibody.com](mailto:order@signalwayantibody.com)Support: [tech@signalwayantibody.com](mailto:tech@signalwayantibody.com)

## Description

Product Name	Synapsin I Polyclonal Antibody
Host Species	Rabbit
Clonality	Polyclonal
Purification	The antibody was affinity-purified from rabbit antiserum by affinity-chromatography using epitope-specific immunogen.
Applications	WB IHC IF ELISA
Species Reactivity	Hu Ms Rt
Specificity	Synapsin I Polyclonal Antibody detects endogenous levels of Synapsin I protein.
Immunogen Type	peptide
Immunogen Description	Synthesized peptide derived from human Synapsin I around the non-phosphorylation site of S9.
Target Name	Synapsin I
Other Names	SYN1; Synapsin-1; Brain protein 4.1; Synapsin I
Accession No.	Swiss-Prot: P17600NCBI Gene ID: 6853
Uniprot	P17600
GeneID	6853;
SDS-PAGE MW	74kd
Concentration	1mg/ml
Formulation	Liquid in PBS containing 50% glycerol, 0.5% BSA and 0.02% sodium azide.
Storage	Store at -20°C/1 year

## Application Details

Western Blot: 1/500 - 1/2000.

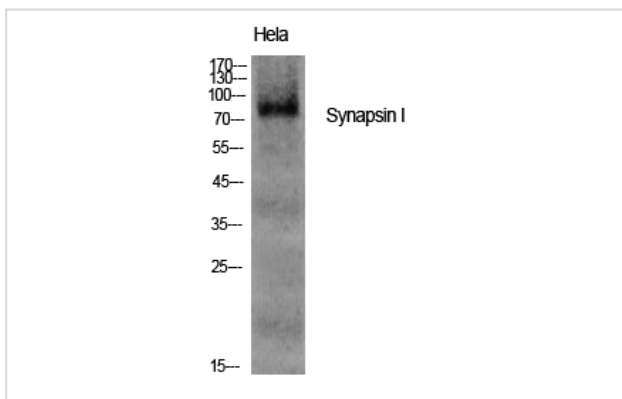
Immunohistochemistry: 1/100 - 1/300.

Immunofluorescence: 1/200 - 1/1000.

ELISA: 1/20000.

Not yet tested in other applications.

## Images



Western Blot analysis of HELA cells using Synapsin I Polyclonal Antibody

Note: This product is for in vitro research use only