

Bad Rabbit mAb

Catalog No: #48623

Package Size: #48623-1 50ul #48623-2 100ul

Orders: order@signalwayantibody.com

Support: tech@signalwayantibody.com

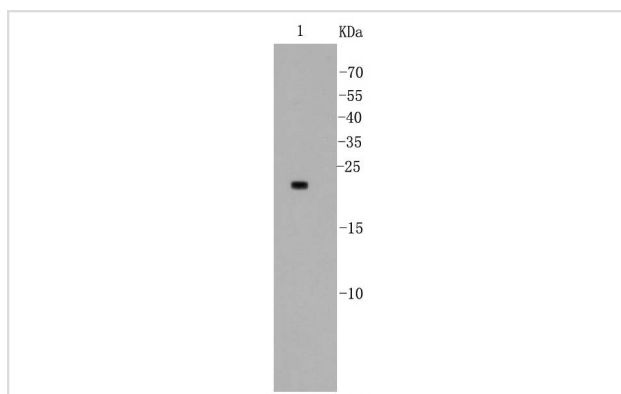
Description

Product Name	Bad Rabbit mAb
Host Species	Recombinant Rabbit
Clonality	Monoclonal antibody
Clone No.	SA32-01
Purification	ProA affinity purified
Applications	WB, ICC/IF, IHC, IP, FC
Species Reactivity	Hu, Ms, Rt
Immunogen Description	recombinant protein
Other Names	AI325008 antibody BAD antibody BAD_HUMAN antibody BBC 2 antibody BBC2 antibody BBC6 antibody Bcl 2 Antagonist of Cell Death antibody Bcl 2 Binding Component 6 antibody BCL X / BCL 2 Binding Protein antibody BCL X Binding Protein antibody Bcl XL/Bcl 2 Associated Death Promoter antibody Bcl-2-binding component 6 antibody Bcl-2-like protein 8 antibody Bcl-XL/Bcl-2-associated death promoter antibody Bcl2 antagonist of cell death antibody BCL2 antagonist of cell death protein antibody BCL2 associated agonist of cell death antibody Bcl2 Associated Death Promoter antibody BCL2 binding component 6 antibody BCL2 binding protein antibody Bcl2 Like 8 Protein antibody Bcl2-L-8 antibody BCL2L8 antibody Proapoptotic BH3 Only Protein antibody
Accession No.	Swiss-Prot#:Q92934
Uniprot	Q92934
GeneID	572;
Calculated MW	23 kDa
Formulation	1*TBS (pH7.4), 1%BSA, 40%Glycerol. Preservative: 0.05% Sodium Azide.
Storage	Store at -20°C

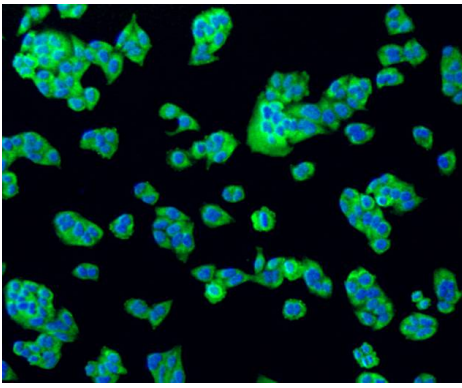
Application Details

WB: 1:500-1:1,000 IHC: 1:50-1:200 ICC: 1:50-1:200FC: 1:10-1:100

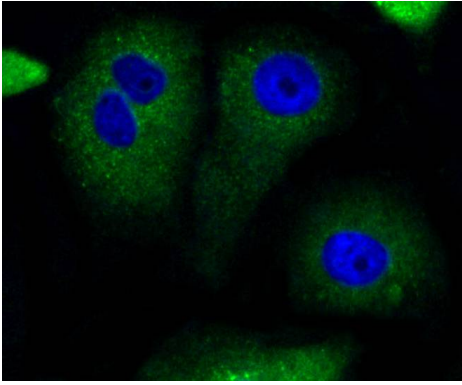
Images



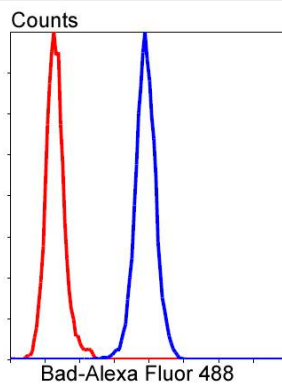
Western blot analysis of Bad on MCF-7 cell lysates using anti-Bad antibody at 1/500 dilution.



ICC staining Bad in HeLa cells (green). The nuclear counter stain is DAPI (blue). Cells were fixed in paraformaldehyde, permeabilised with 0.25% Triton X100/PBS.



ICC staining Bad in MCF-7 cells (green). The nuclear counter stain is DAPI (blue). Cells were fixed in paraformaldehyde, permeabilised with 0.25% Triton X100/PBS.



Flow cytometric analysis of HeLa cells with Bad antibody at 1/50 dilution (blue) compared with an unlabelled control (cells without incubation with primary antibody; red). Alexa Fluor 488-conjugated goat anti rabbit IgG was used as the secondary antibody.

Background

The Bcl-2 family of proteins is characterized by its ability to modulate cell death (apoptosis) under a broad range of physiologic conditions. Bcl-2 and several related proteins function to inhibit apoptosis while other members of the Bcl-2 family, such as Bax and Bak, enhance cell death under various conditions. For instance, Bcl-xL represses cell death, while its shorter form, Bcl-xS, promotes apoptosis. A protein designated Bad exhibits homology to Bcl-2 limited to the BH1 and BH2 domains. Bad functions to dimerize with Bcl-xL and with Bcl-2, but not with Bax, Bcl-xS, Mcl-1, A1 or itself. In mammalian cells, Bad binds with greater affinity to Bcl-xL than to Bcl-2 and reverses the death repressor activity of Bcl-xL but not Bcl-2. Dimerization of Bad with Bcl-xL results in displacement of Bax from Bcl-xL:Bax complexes thereby causing restoration of Bax-mediated apoptosis.

References

Note: This product is for in vitro research use only