

Cytokeratin 20 Rabbit mAb

Catalog No: #48624

Package Size: #48624-1 50ul #48624-2 100ul

Orders: order@signalwayantibody.com

Support: tech@signalwayantibody.com

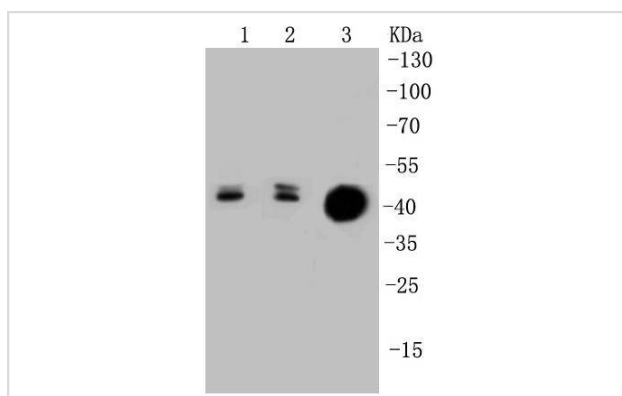
Description

Product Name	Cytokeratin 20 Rabbit mAb
Host Species	Recombinant Rabbit
Clonality	Monoclonal antibody
Clone No.	SA35-03
Purification	ProA affinity purified
Applications	WB, ICC/IF, IHC, IP, FC
Species Reactivity	Hu, Rt
Immunogen Description	recombinant protein
Other Names	CD20 antibody CK 20 antibody CK-20 antibody CK20 antibody Cytokeratin-20 antibody Cytokeratin20 antibody K1C20_HUMAN antibody K20 antibody KA20 antibody Keratin 20 antibody keratin 20, type I antibody keratin 21, rat, homolog of antibody Keratin antibody Keratin type I cytoskeletal 20 antibody Keratin-20 antibody Keratin20 antibody KRT 20 antibody KRT 21 antibody KRT20 antibody KRT21 antibody MGC35423 antibody OTTHUMP00000164518 antibody Protein IT antibody type I cytoskeletal 20 antibody
Accession No.	Swiss-Prot#:P35900
Uniprot	P35900
GeneID	54474;
Calculated MW	44 kDa
Formulation	1*TBS (pH7.4), 1%BSA, 40%Glycerol. Preservative: 0.05% Sodium Azide.
Storage	Store at -20°C

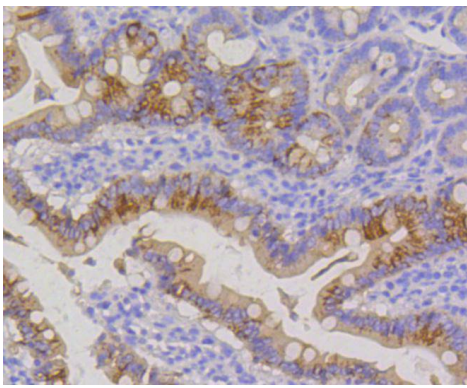
Application Details

WB: 1:1,000-5,000 IHC: 1:50-1:200 ICC: 1:50-1:200 FC: 1:10-1:100

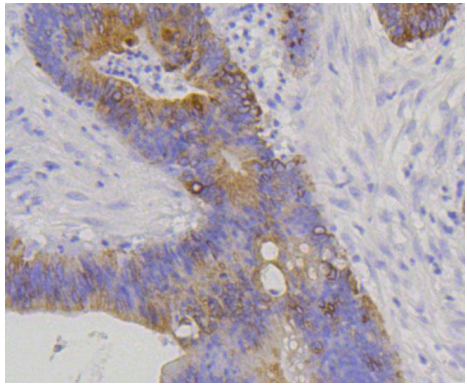
Images



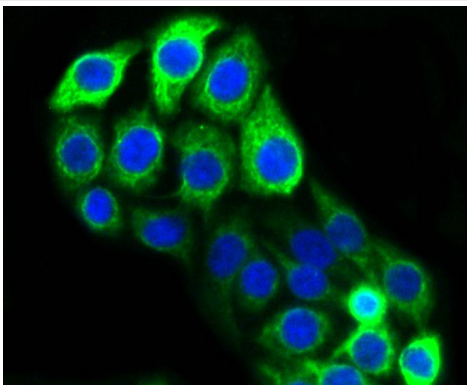
Western blot analysis of Cytokeratin 20 on different cell lysates using anti-Cytokeratin 20 antibody at 1/1,000 dilution. Positive control: Lane 1: Lovo Lane 2: HCT116 Lane 3: CRC



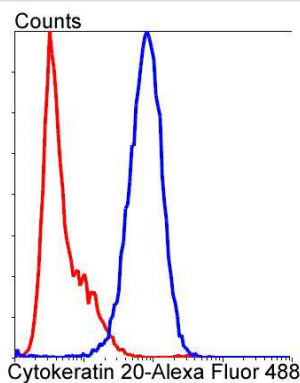
Immunohistochemical analysis of paraffin-embedded rat small intestine tissue using anti-Cytokeratin 20 antibody. Counter stained with hematoxylin.



Immunohistochemical analysis of paraffin-embedded human colon cancer tissue using anti-Cytokeratin 20 antibody. Counter stained with hematoxylin.



ICC staining Cytokeratin 20 in CRC cells (green). The nuclear counter stain is DAPI (blue). Cells were fixed in paraformaldehyde, permeabilised with 0.25% Triton X100/PBS.



Flow cytometric analysis of CRC cells with Cytokeratin 20 antibody at 1/50 dilution (blue) compared with an unlabelled control (cells without incubation with primary antibody; red). Alexa Fluor 488-conjugated goat anti rabbit IgG was used as the secondary antibody.

Background

Cytokeratins comprise a diverse group of intermediate filament proteins (IFPs) that are expressed as pairs in both keratinized and non-keratinized epithelial tissue, where they constitute up to 85% of mature keratinocytes in the vertebrate epidermis. Cytokeratins play a critical role in differentiation and tissue specialization and function to maintain the overall structural integrity of epithelial cells. The α -helical coiled-coil dimers associate laterally end-to-end to form 10 nm diameter filaments. Cytokeratins are useful markers of tissue differentiation, and in addition, they aid in the characterization of malignant tumors. Cytokeratin 20 is abundantly expressed in goblet cells and enterocytes of the gastrointestinal tract, and Cytokeratin 20 is a useful marker of pancreatic and colorectal cancer. Cytokeratin 20 is also helpful in distinguishing different types of highly related carcinomas, such as renal oncocytomas from renal cell carcinomas.

References

Note: This product is for in vitro research use only