

## Phospho-Histone H2A.X(S139) Rabbit mAb

Catalog No: #13343

Package Size: #13343-1 50ul #13343-2 100ul

Orders: order@signalwayantibody.com

Support: tech@signalwayantibody.com

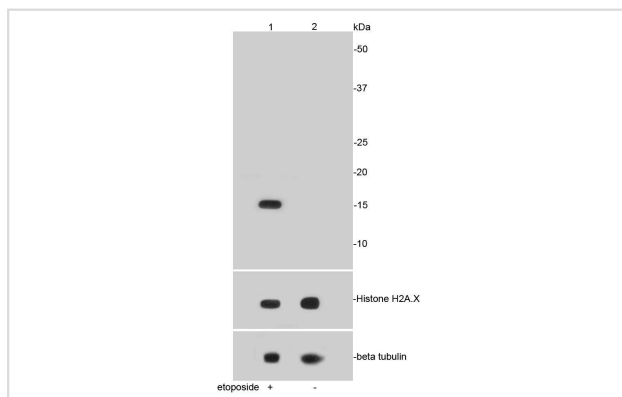
## Description

Product Name	Phospho-Histone H2A.X(S139) Rabbit mAb
Host Species	Rabbit
Clonality	Monoclonal
Clone No.	SR33-09
Purification	ProA affinity purified
Applications	WB, IHC
Species Reactivity	Hu, Ms, Rt
Immunogen Description	Synthetic phospho-peptide corresponding to residues surrounding Ser139 of human Histone H2A.X.
Other Names	AW228881 antibody H2A histone family member X antibody H2A.FX antibody H2A.X antibody H2a/x antibody H2AFX antibody H2AX antibody H2AX histone antibody H2AX_HUMAN antibody Hist5.2ax antibody Histone 2A antibody Histone 2AX antibody Histone H2A.X antibody Histone H2AX antibody RGD1566119 antibody
Accession No.	Swiss-Prot#:P16104
Uniprot	P16104
GeneID	3014;
Calculated MW	15 kDa
Formulation	1*TBS (pH7.4), 1%BSA, 40%Glycerol. Preservative: 0.05% Sodium Azide.
Storage	Store at -20°C

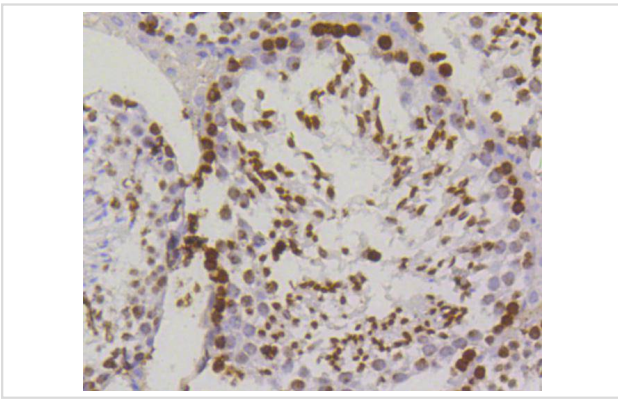
## Application Details

WB: 1:1,000-5,000 IHC: 1:50-1:200

## Images



Western blot analysis of Phospho-Histone H2A.X(S139) on HepG2 cell lysates using anti-Phospho-Histone H2A.X(S139) antibody at 1/1,000 dilution. Positive control:  
 Lane 1: HepG2 cell lysate  $\Omega$  1/2 C treated with etoposide  
 Lane 3: HepG2 cell lysate  $\Omega$  1/2 C untreated



Immunohistochemical analysis of paraffin-embedded mouse testis tissue using anti- Phospho-Histone H2A.X(S139) antibody. Counter stained with hematoxylin.

## Background

Histone H2A.X is a member of the Histone H2A family, which is involved in nucleosomal organization of chromatin. The H2AFX gene is located in close proximity to the Porphobilinogen deaminase (PBG-D) gene in both mouse and human, and maps to chromosome 9 and 11q23, respectively. H2A.X differs from the other members of the H2A family by the presence of a highly conserved C-terminal motif. It is rapidly phosphorylated in response to ionizing radiation and plays an important role in the recognition and repair of DNA double stranded breaks. The phosphorylated form of H2A.X, designated  $\gamma$ -H2A.X, forms nuclear foci at the heavy chain constant region of cells involved in class switch recombination (CSR), a region-specific DNA reaction that replaces one immunoglobulin heavy chain constant region gene with another. The phosphorylated  $\gamma$ -H2A.X is also thought to initiate subsequent repair factors, including Rad50, Rad51 and BRCA1.

## References

Note: This product is for in vitro research use only