

CCR7 Rabbit mAb

Catalog No: #48640

Package Size: #48640-1 50ul #48640-2 100ul

Orders: order@signalwayantibody.com

Support: tech@signalwayantibody.com

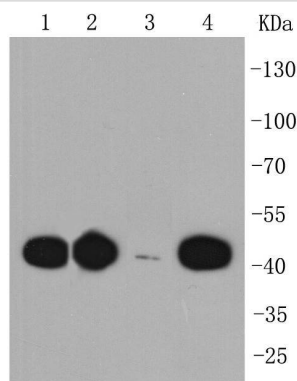
Description

Product Name	CCR7 Rabbit mAb
Host Species	Recombinant Rabbit
Clonality	Monoclonal antibody
Clone No.	SR36-04
Purification	ProA affinity purified
Applications	WB, ICC/IF, IHC, IP
Species Reactivity	Hu, Ms, Rt
Immunogen Description	recombinant protein
Other Names	BLR 2 antibody BLR2 antibody C C chemokine receptor type 7 antibody C C CKR 7 antibody C-C chemokine receptor type 7 antibody C-C CKR-7 antibody CC chemokine receptor 7 antibody CC chemokine receptor type 7 antibody CC CKR 7 antibody CC-CKR-7 antibody CCCKR7 antibody CCR 7 antibody CCR-7 antibody Ccr7 antibody CCR7_HUMAN antibody CD 197 antibody CD197 antibody CD197 antigen antibody CDw197 antibody Chemokine (C C motif) receptor 7 antibody Chemokine (C C) receptor 7 antibody Chemokine C C motif receptor 7 antibody Chemokine C C receptor 7 antibody Chemokine receptor 7 antibody Chemokine receptor 7-like protein antibody CMKBR7 antibody EBI 1 antibody EBI1 antibody Ebi1h antibody EBV Induced G Protein Coupled Receptor 1 antibody EBV-induced G-protein coupled receptor 1 antibody Epstein Barr virus induced G protein coupled receptor antibody Epstein Barr virus induced gene 1 antibody Epstein-Barr virus-induced G-protein coupled receptor 1 antibody EVI 1 antibody EVI1 antibody Lymphocyte Specific G Protein Coupled Peptide Receptor antibody MGC108519 antibody MIP 3 beta receptor antibody MIP-3 beta receptor antibody MIP3 Beta Receptor antibody
Accession No.	Swiss-Prot#:P32248
Uniprot	P32248
GeneID	1236;
Calculated MW	43 kDa
Formulation	1*TBS (pH7.4), 1%BSA, 40%Glycerol. Preservative: 0.05% Sodium Azide.
Storage	Store at -20°C

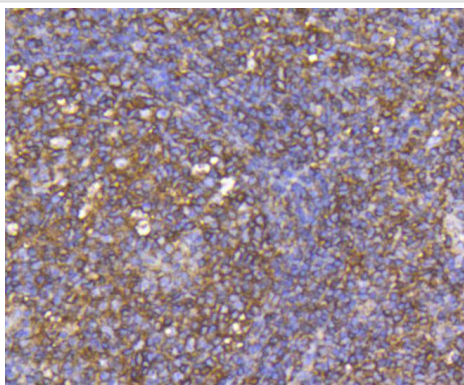
Application Details

WB: 1:1,000-5,000IHC: 1:50-1:200ICC: 1:50-1:200

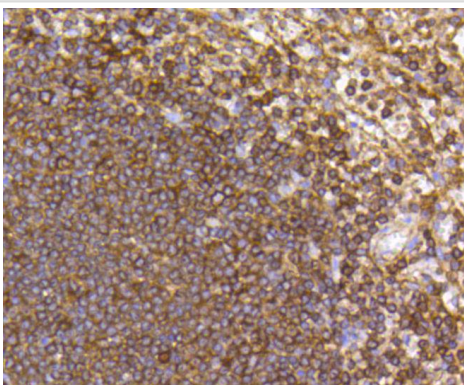
Images



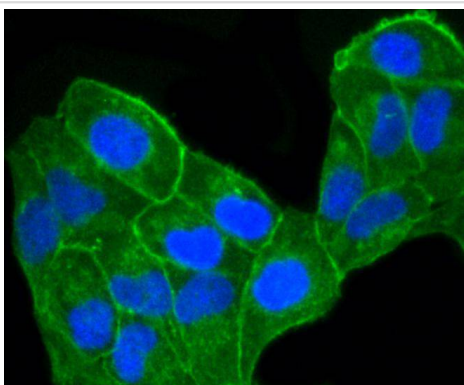
Western blot analysis of CCR7 on different cell lysates using anti-CCR7 antibody at 1/1,000 dilution. Positive control: Lane 1: MCF-7 Lane 2: PC-12 Lane 3: Daudi Lane 4: Jurkat



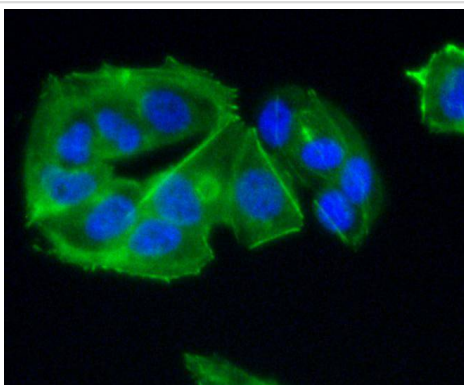
Immunohistochemical analysis of paraffin-embedded human tonsil tissue using anti-CCR7 antibody. Counter stained with hematoxylin.



Immunohistochemical analysis of paraffin-embedded human spleen tissue using anti-CCR7 antibody. Counter stained with hematoxylin.



ICC staining CCR7 in HeLa cells (green). The nuclear counter stain is DAPI (blue). Cells were fixed in paraformaldehyde, permeabilised with 0.25% Triton X100/PBS.



ICC staining CCR7 in MCF-7 cells (green). The nuclear counter stain is DAPI (blue). Cells were fixed in paraformaldehyde, permeabilised with 0.25% Triton X100/PBS.

Background

C-C or chemokine family members are characterized by a pair of adjacent cysteine residues and serve as potent chemoattractants and activators of monocytes and T cells. C-C chemokine receptor family members include CKR-1, CKR-2A, CKR-2B, CKR-3, CKR-4, CKR-5, CKR-6, CKR-7, CKR-8, CKR-9, CKR-10 and the Duffy blood group antigen. Each of these receptors are G protein-coupled, seven pass transmembrane domain proteins whose major physiological role is to function in the chemotaxis of T cells and phagocytic cells to areas of inflammation. However, this receptor family has also been shown to facilitate viral infection. CKR-7 (C-C chemokine receptor type 7), also known as CCR7, CMKBR7, EB11 or EVI1, is a 378 amino acid multi-pass membrane protein that belongs to the CC-chemokine receptor family. Expressed in activated B- and T-lymphocytes, as well as in various lymphoid tissues, CKR-7 functions as a receptor for MIP-3 and is thought to be involved in mediating normal lymphocyte function.

References

Note: This product is for in vitro research use only