

## Rho A+B+C Rabbit mAb

Catalog No: #48641



Package Size: #48641-1 50ul #48641-2 100ul

Orders: order@signalwayantibody.com

Support: tech@signalwayantibody.com

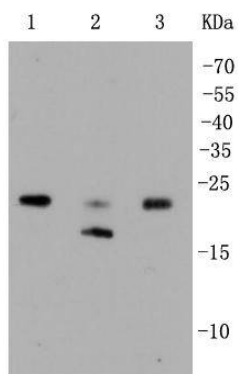
## Description

Product Name	Rho A+B+C Rabbit mAb
Host Species	Recombinant Rabbit
Clonality	Monoclonal antibody
Clone No.	SR38-00
Purification	ProA affinity purified
Applications	WB, ICC/IF, IHC, FC
Species Reactivity	Hu, Ms, Rt
Immunogen Description	recombinant protein
Other Names	AA017882 antibody AI324259, antibody Aplysia ras related homolog 9 (RhoC) antibody Aplysia ras-related homolog 12 antibody Aplysia RAS-related homolog 6 antibody Aplysia RAS-related homolog antibody ARH12 antibody ARH6 antibody ARH9 antibody ARHA antibody ARHB antibody ARHC antibody H12 antibody H6 antibody H9 antibody MGC117867 antibody MGC1448 antibody MGC61427 antibody MST081 antibody MSTP081 antibody Oncogene RHO H12 antibody Oncogene RHO H6 antibody Oncogene RHO H9 antibody OTTHUMP00000013675 antibody OTTHUMP00000013676 antibody OTTHUMP00000013802 antibody OTTHUMP00000013805 antibody OTTHUMP00000013807 antibody OTTHUMP00000013809 antibody OTTMUSP00000025086 antibody OTTMUSP00000025087 antibody Ras homolog 9 (RhoC) antibody Ras homolog gene family, member A antibody Ras homolog gene family, member B antibody Ras homolog gene family, member C antibody RAS-related homolog 9 antibody Rh -related GTP binding protein RhoC antibody Rho cDNA clone 12 antibody rho cDNA clone 6 antibody rho cDNA clone 9 antibody Rho related GTP binding protein RhoB antibody Rho related GTP binding protein RhoC antibody RHO12 antibody RHOA antibody RHOB antibody RHOC antibody rhoC GTPase antibody RHOH12 antibody RHOH6 antibody RHOH9 antibody RP11-426L16.4 antibody small GTP binding protein RhoA antibody Small GTP binding protein RhoC antibody Transforming protein RhoA antibody
Accession No.	Swiss-Prot#:P08134
Uniprot	P08134
GeneID	389;
Calculated MW	24 kDa
Formulation	1*TBS (pH7.4), 1%BSA, 40%Glycerol. Preservative: 0.05% Sodium Azide.
Storage	Store at -20°C

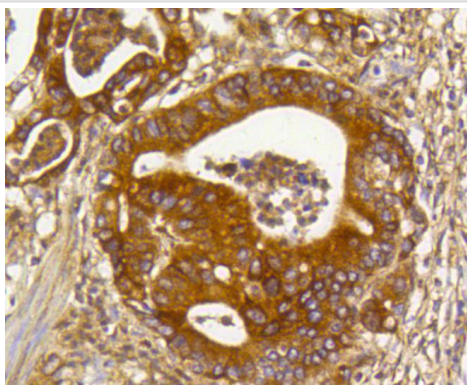
## Application Details

WB: 1:1,000-1:2,000 IHC: 1:200-1:500 ICC: 1:50-1:200FC: 1:50-1:100

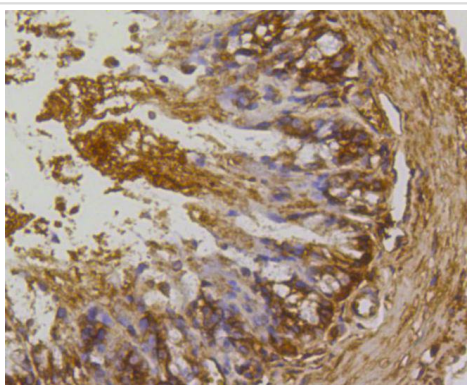
## Images



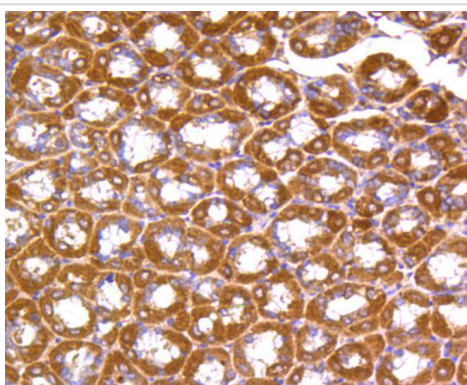
Western blot analysis of Rho A+B+C on different lysates using anti-Rho A+B+C antibody at 1/1,000 dilution. Positive control:  
 Lane 1: HepG2  
 Lane 2: HeLa  
 Lane 3: Jurkat



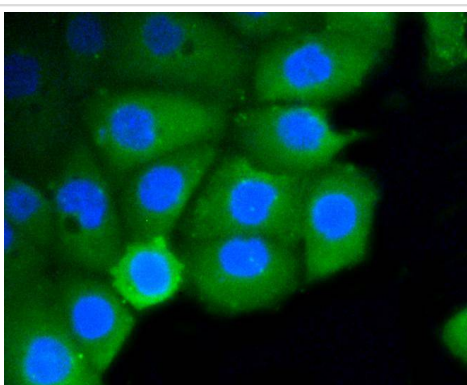
Immunohistochemical analysis of paraffin-embedded human gastric carcinoma tissue using anti-Rho A+B+C antibody. Counter stained with hematoxylin.



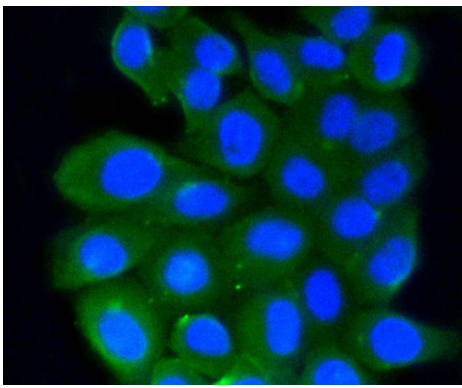
Immunohistochemical analysis of paraffin-embedded mouse colon tissue using anti-Rho A+B+C antibody. Counter stained with hematoxylin.



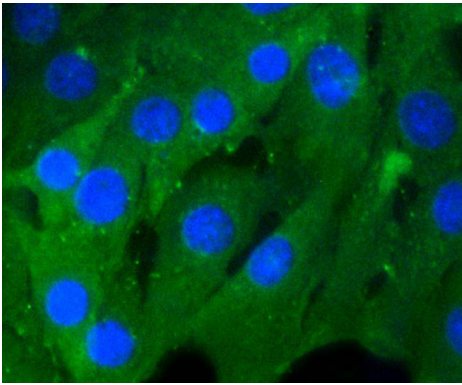
Immunohistochemical analysis of paraffin-embedded mouse stomach tissue using anti-Rho A+B+C antibody. Counter stained with hematoxylin.



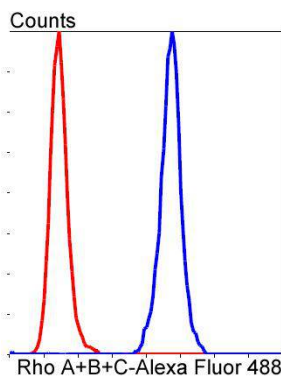
ICC staining Rho A+B+C in Ags cells (green). The nuclear counter stain is DAPI (blue). Cells were fixed in paraformaldehyde, permeabilised with 0.25% Triton X100/PBS.



ICC staining Rho A+B+C in HepG2 cells (green). The nuclear counter stain is DAPI (blue). Cells were fixed in paraformaldehyde, permeabilised with 0.25% Triton X100/PBS.



ICC staining Rho A+B+C in NIH/3T3 cells (green). Cells were fixed in paraformaldehyde, permeabilised with 0.25% Triton X100/PBS.



Flow cytometric analysis of HepG2 cells with Rho A+B+C antibody at 1/50 dilution (blue) compared with an unlabelled control (cells without incubation with primary antibody; red). Alexa Fluor 488-conjugated goat anti rabbit IgG was used as the secondary antibody.

## Background

The Ras p21 family of guanine nucleotide proteins has been widely studied in view of its apparent role in signal transduction pathways and high frequency of mutations in human malignancies. It is now clear, however, that the Ras proteins (H-, K- and N-Ras p21) are members of a much larger superfamily of related proteins. Six members of this family, Rap 1A, Rap 1B, Rap 2, R-Ras, Ral A and Ral B, exhibit approximately 50% amino acid homology to Ras. The six mammalian Rho proteins (Rho A, B, C, G, 7 and 8) are approximately 30% homologous to Ras and are expressed in a wide range of cell types. Both Ras p21 and Rho p21, as well as other members of the Ras superfamily, contain a carboxy-terminal CAAX sequence (C, cysteine; A, aliphatic amino acid; X, any amino acid) which in the case of Ras has been shown to be essential for correct localization and function.

## References

Note: This product is for in vitro research use only