

Synaptotagmin XIII Polyclonal Antibody

Catalog No: #41472

Package Size: #41472-1 50ul #41472-2 100ul

Orders: order@signalwayantibody.comSupport: tech@signalwayantibody.com

Description

Product Name	Synaptotagmin XIII Polyclonal Antibody
Host Species	Rabbit
Clonality	Polyclonal
Purification	The antibody was affinity-purified from rabbit antiserum by affinity-chromatography using epitope-specific immunogen.
Applications	WB ELISA
Species Reactivity	Hu Ms Rt
Specificity	Synaptotagmin XIII Polyclonal Antibody detects endogenous levels of Synaptotagmin XIII protein.
Immunogen Type	peptide
Immunogen Description	Synthesized peptide derived from the Internal region of human Synaptotagmin XIII.
Target Name	Synaptotagmin XIII
Other Names	SYT13; KIAA1427; Synaptotagmin-13; Synaptotagmin XIII; SytXIII
Accession No.	Swiss-Prot: Q7L8C5NCBI Gene ID: 57586
Uniprot	Q7L8C5
GeneID	57586;
SDS-PAGE MW	48kd
Concentration	1mg/ml
Formulation	Liquid in PBS containing 50% glycerol, 0.5% BSA and 0.02% sodium azide.
Storage	Store at -20°C/1 year

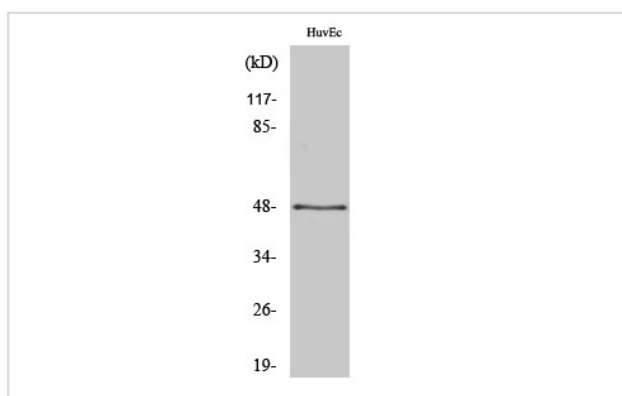
Application Details

Western Blot: 1/500 - 1/2000.

ELISA: 1/10000.

Not yet tested in other applications.

Images



Western Blot analysis of HuvEc cells using Synaptotagmin XIII Polyclonal Antibody

Note: This product is for in vitro research use only