

p38 Rabbit mAb

Catalog No: #48644

Package Size: #48644-1 50ul #48644-2 100ul

Orders: order@signalwayantibody.comSupport: tech@signalwayantibody.com

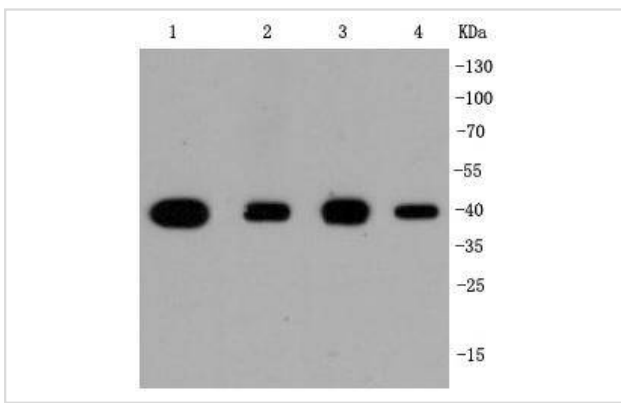
Description

Product Name	p38 Rabbit mAb
Host Species	Recombinant Rabbit
Clonality	Monoclonal antibody
Clone No.	SR43-04
Purification	ProA affinity purified
Applications	WB, ICC/IF
Species Reactivity	Hu, Ms, Rt
Immunogen Description	recombinant protein
Other Names	CSAID Binding Protein 1 antibody CSAID binding protein antibody CSAID-binding protein antibody Csaids binding protein antibody CSBP 1 antibody CSBP 2 antibody CSBP antibody CSBP1 antibody CSBP2 antibody CSPB1 antibody Cytokine suppressive anti-inflammatory drug-binding protein antibody EXIP antibody MAP kinase 14 antibody MAP kinase MXI2 antibody MAP kinase p38 alpha antibody MAPK 14 antibody MAPK14 antibody MAX interacting protein 2 antibody MAX-interacting protein 2 antibody Mitogen Activated Protein Kinase 14 antibody Mitogen activated protein kinase p38 alpha antibody Mitogen-activated protein kinase 14 antibody Mitogen-activated protein kinase p38 alpha antibody MK14_HUMAN antibody Mxi 2 antibody MXI2 antibody p38 ALPHA antibody p38 antibody p38 MAP kinase antibody p38 MAPK antibody p38 mitogen activated protein kinase antibody p38ALPHA antibody p38alpha Exip antibody PRKM14 antibody PRKM15 antibody RK antibody SAPK2A antibody
Accession No.	Swiss-Prot#:Q16539
Uniprot	Q16539
GeneID	1432;
Calculated MW	38 kDa
Formulation	1*TBS (pH7.4), 1%BSA, 40%Glycerol. Preservative: 0.05% Sodium Azide.
Storage	Store at -20°C

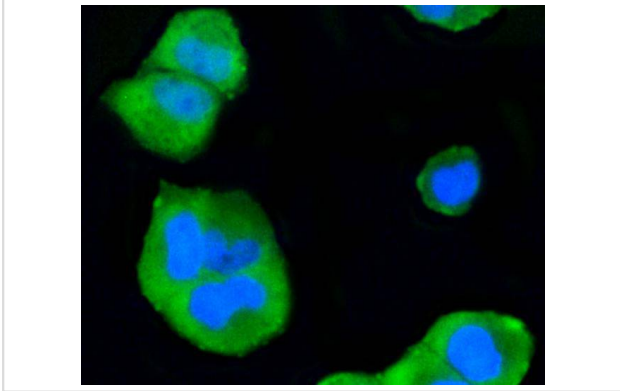
Application Details

WB: 1:1,000-5,000 ICC: 1:50-1:200

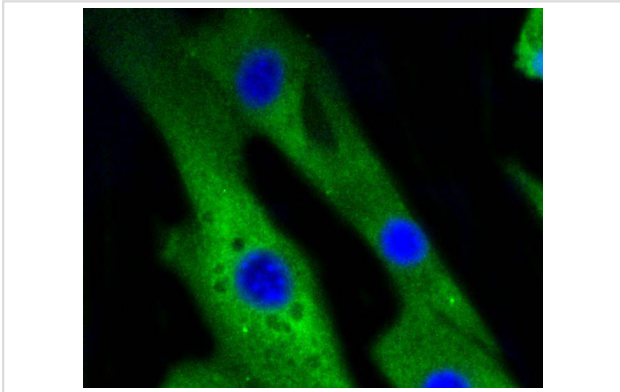
Images



Western blot analysis of p38 on different cell lysates using anti-p38 antibody at 1/1,000 dilution. Positive control: Lane 1: Hela Lane 2: NIH/3T3 Lane 3: PC-12 Lane 4: Jurkat



ICC staining p38 in HeLa cells (green). The nuclear counter stain is DAPI (blue). Cells were fixed in paraformaldehyde, permeabilised with 0.25% Triton X100/PBS.



ICC staining p38 in NIH/3T3 cells (green). The nuclear counter stain is DAPI (blue). Cells were fixed in paraformaldehyde, permeabilised with 0.25% Triton X100/PBS.

Background

MAP (mitogen-activated protein) kinases play a significant role in many biological processes, including cell adhesion and spreading, cell differentiation and apoptosis. p38 α , p38 β and p38 γ , also known as MAPK14, MAPK11 and MAPK12, respectively, each contain one protein kinase domain and belong to the MAP kinase family. Expressed in different areas throughout the body with common expression patterns in heart, p38 proteins use magnesium as a cofactor to catalyze the ATP-dependent phosphorylation of target proteins. Via their catalytic activity, p38 α , p38 β and p38 γ are involved in a variety of events throughout the cell, including signal transduction pathways, cytokine production and cell proliferation and differentiation. The p38 proteins are subject to phosphorylation on Thr and Tyr residues, an event which is thought to activate the phosphorylated protein.

References

Note: This product is for in vitro research use only