

Synuclein- $\alpha$  Polyclonal Antibody

Catalog No: #41474

Package Size: #41474-1 50ul #41474-2 100ul

Orders: [order@signalwayantibody.com](mailto:order@signalwayantibody.com)Support: [tech@signalwayantibody.com](mailto:tech@signalwayantibody.com)

## Description

Product Name	Synuclein- $\alpha$ Polyclonal Antibody
Host Species	Rabbit
Clonality	Polyclonal
Purification	The antibody was affinity-purified from rabbit antiserum by affinity-chromatography using epitope-specific immunogen.
Applications	WB IHC IF ELISA
Species Reactivity	Hu Ms Rt
Specificity	Synuclein- $\alpha$ Polyclonal Antibody detects endogenous levels of Synuclein- $\alpha$ protein.
Immunogen Type	peptide
Immunogen Description	Synthesized peptide derived from human Synuclein- $\alpha$ around the non-phosphorylation site of Y133.
Target Name	Synuclein- $\alpha$
Other Names	SNCA; NACP; PARK1; Alpha-synuclein; Non-A beta component of AD amyloid; Non-A4 component of amyloid precursor; NACP
Accession No.	Swiss-Prot: P37840NCBI Gene ID: 6622
Uniprot	P37840
GeneID	6622;
SDS-PAGE MW	14kd
Concentration	1mg/ml
Formulation	Liquid in PBS containing 50% glycerol, 0.5% BSA and 0.02% sodium azide.
Storage	Store at -20°C/1 year

## Application Details

Western Blot: 1/500 - 1/2000.

Immunohistochemistry: 1/100 - 1/300.

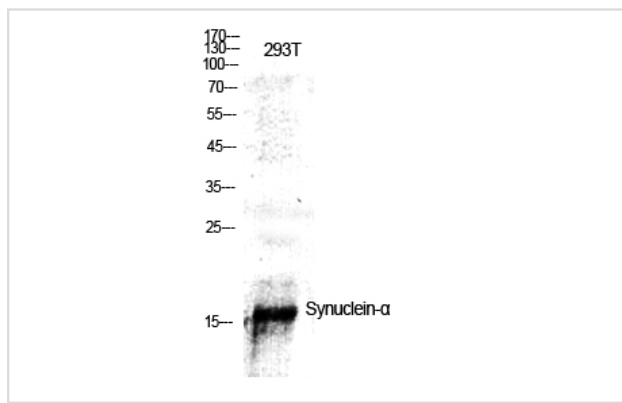
Immunofluorescence: 1/200 - 1/1000.

ELISA: 1/20000.

Not yet tested in other applications.

## Images

Western Blot analysis of 293T cells using Synuclein- $\alpha$  Polyclonal Antibody



---

Note: This product is for in vitro research use only