

## M6PR Rabbit mAb

Catalog No: #48669

Package Size: #48669-1 50ul #48669-2 100ul

Orders: [order@signalwayantibody.com](mailto:order@signalwayantibody.com)Support: [tech@signalwayantibody.com](mailto:tech@signalwayantibody.com)

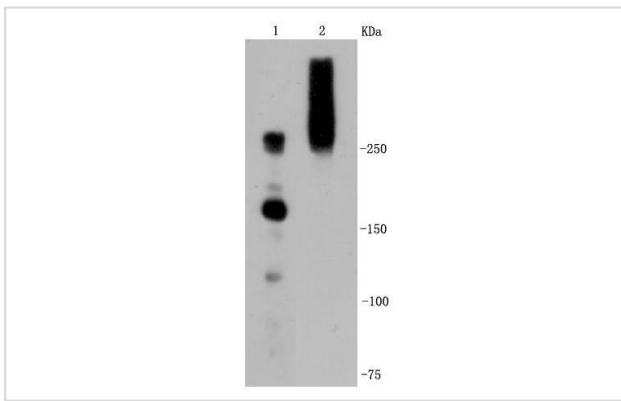
## Description

Product Name	M6PR Rabbit mAb
Host Species	Recombinant Rabbit
Clonality	Monoclonal antibody
Clone No.	SR45-09
Purification	ProA affinity purified
Applications	WB, ICC/IF, IHC, IP, FC
Species Reactivity	Hu, Ms, Rt
Immunogen Description	recombinant protein
Other Names	300 kDa mannose 6 phosphate receptor antibody 300 kDa mannose 6-phosphate receptor antibody Cation independent mannose 6 phosphate receptor antibody Cation-independent mannose-6-phosphate receptor antibody CD222 antibody CD222 antigen antibody CI Man 6 P receptor antibody CI Man-6-P receptor antibody CI MPR antibody CI-M6PR antibody CI-MPR antibody CIMPR antibody IGF 2 receptor antibody IGF 2R antibody IGF II receptor antibody IGF-II receptor antibody IGF2 receptor antibody Igf2r antibody Insulin like growth factor 2 receptor antibody Insulin like growth factor II receptor antibody Insulin-like growth factor 2 receptor antibody Insulin-like growth factor II receptor antibody M6P R antibody M6P/IGF2 receptor antibody M6P/IGF2R antibody M6PR antibody mannose 6 phosphate receptor antibody mannose 6 phosphate receptor, cation independent antibody MPR 300 antibody MPR300 antibody MPRI antibody MPRI_HUMAN antibody
Accession No.	Swiss-Prot#:P11717
Uniprot	P11717
GeneID	3482;
Calculated MW	274 kDa
Formulation	1*TBS (pH7.4), 1%BSA, 40%Glycerol. Preservative: 0.05% Sodium Azide.
Storage	Store at -20°C

## Application Details

WB: 1:1,000-1:10,000 IHC: 1:50-1:200 ICC: 1:50-1:200FC: 1:50-1:100

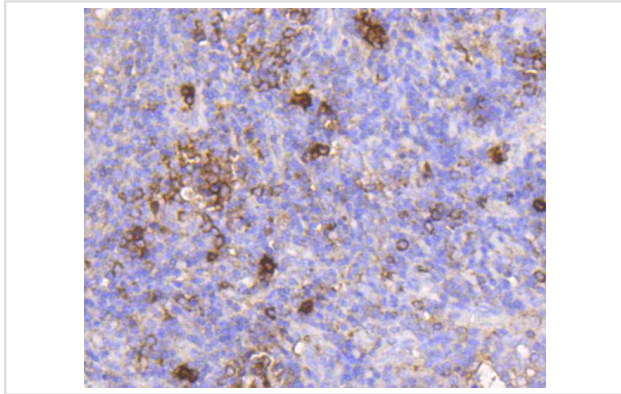
## Images



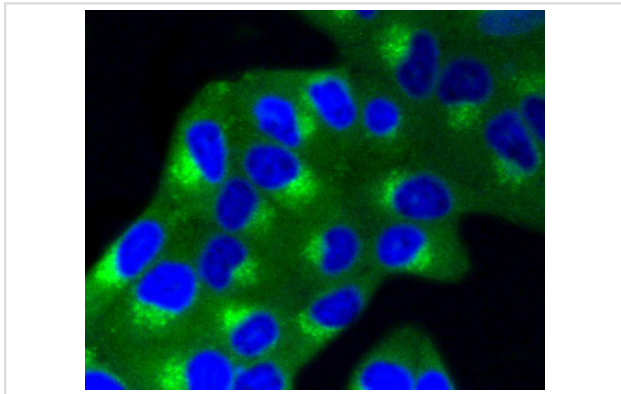
Western blot analysis of M6PR on different cell lysates using anti-M6PR antibody at 1/1,000 dilution. Positive control:

Lane 1: HepG2

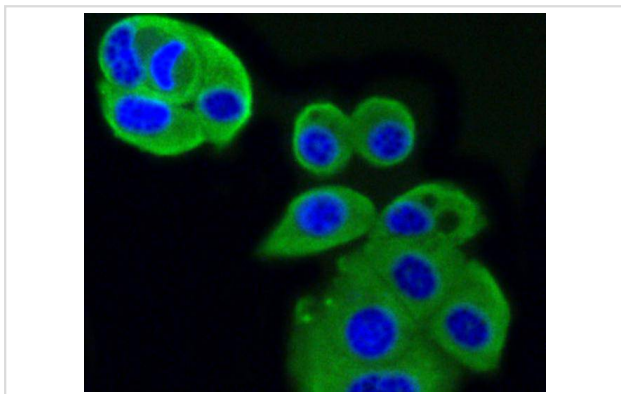
Lane 2: SW480



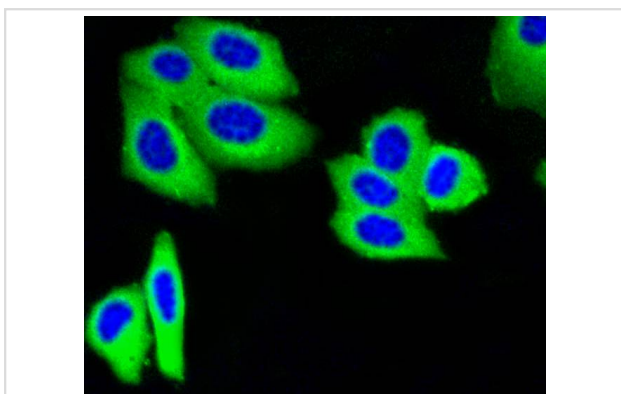
Immunohistochemical analysis of paraffin-embedded human tonsil tissue using anti-M6PR antibody. Counter stained with hematoxylin.



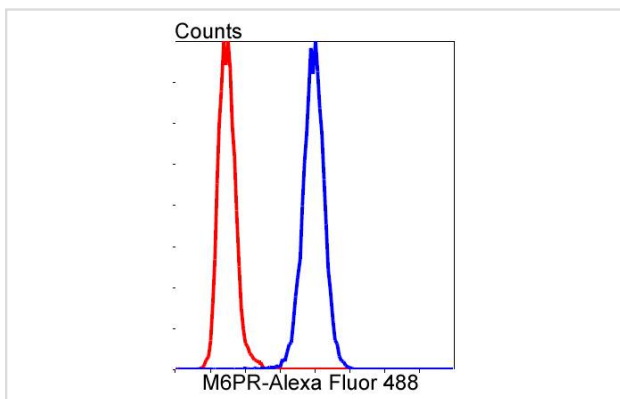
ICC staining M6PR in HeLa cells (green). The nuclear counter stain is DAPI (blue). Cells were fixed in paraformaldehyde, permeabilised with 0.25% Triton X100/PBS.



ICC staining M6PR in MCF-7 cells (green). The nuclear counter stain is DAPI (blue). Cells were fixed in paraformaldehyde, permeabilised with 0.25% Triton X100/PBS.



ICC staining M6PR in HepG2 cells (green). Cells were fixed in paraformaldehyde, permeabilised with 0.25% Triton X100/PBS.



Flow cytometric analysis of HeLa cells with M6PR antibody at 1/50 dilution (blue) compared with an unlabelled control (cells without incubation with primary antibody; red). Alexa Fluor 488-conjugated goat anti rabbit IgG was used as the secondary antibody.

## Background

The mannose 6-phosphate/insulin-like growth factor II receptor, IGF-IIR (also designated M6P/IGF2R), is a ubiquitously expressed integral glycoprotein. By binding glycoproteins through two of its extracytoplasmic domains, IGF-IIR mediates the activation of TGF1 (a growth inhibitor), the degradation of IGF-II and the transport of lysosomal enzymes. Subsequently, IGF-IIR can form oligomeric complexes, which increase the affinity of IGF-IIR for lysosomal enzymes. Unlike IGF-IR, IGF-IIR does not potentiate the signaling of IGF-I or IGF-II, which have mitogenic, cell survival and insulin-like effects. Therefore, IGF-IIR is characterized as a tumor suppressor. Furthermore, the IGF-IIR gene is located on chromosome 6q26, which is commonly mutated or deleted in several human cancers.

## References

Note: This product is for in vitro research use only