

## GFP Rabbit mAb

Catalog No: #48671

Package Size: #48671-1 50ul #48671-2 100ul

Orders: [order@signalwayantibody.com](mailto:order@signalwayantibody.com)Support: [tech@signalwayantibody.com](mailto:tech@signalwayantibody.com)

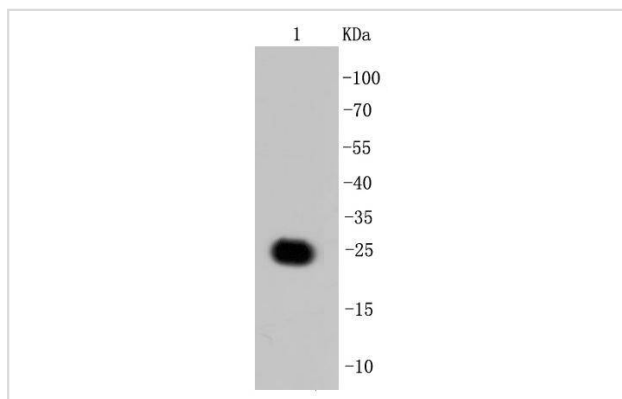
## Description

Product Name	GFP Rabbit mAb
Host Species	Recombinant Rabbit
Clonality	Monoclonal antibody
Clone No.	SR48-02
Purification	ProA affinity purified
Applications	WB, ICC/IF, IHC
Species Reactivity	Aequorea victoria
Immunogen Description	recombinant protein
Other Names	GFP antibody Green fluorescent protein antibody yfp antibody
Accession No.	Swiss-Prot#:
Calculated MW	27 kDa
Formulation	1*TBS (pH7.4), 1%BSA, 40%Glycerol. Preservative: 0.05% Sodium Azide.
Storage	Store at -20°C

## Application Details

WB: 1:5,000-1:10,000 IHC:1:200-1:500 ICC: 1:100-1:500

## Images



Western blot analysis of GFP on recombinant GFP protein using anti-GFP antibody at 1/5,000 dilution.

## Background

Green fluorescence protein (GFP) is derived from the jellyfish *Aequorea victoria*, which emits green light (emission peak at a wavelength of 509 nm) when excited by blue light (excitation peak at a wavelength of 395 nm). GFP fluorescence is stable under fixation conditions and suitable for a variety of applications. It has been widely used as a reporter for gene expression, enabling researchers to visualize and localize GFP-tagged proteins within living cells without chemical staining.

## References

---

Note: This product is for in vitro research use only