

HP1 alpha Rabbit mAb

Catalog No: #48672

Package Size: #48672-1 50ul #48672-2 100ul

Orders: order@signalwayantibody.com

Support: tech@signalwayantibody.com

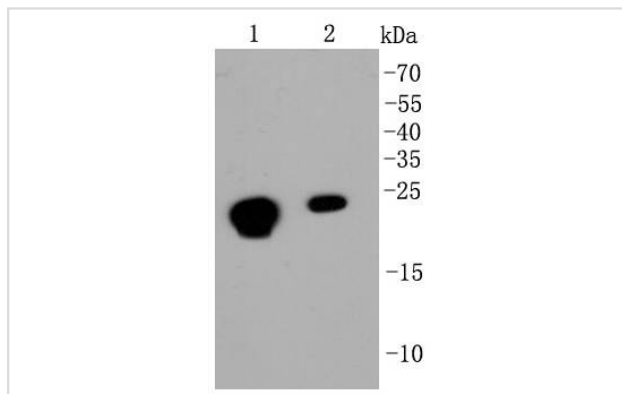
Description

Product Name	HP1 alpha Rabbit mAb
Host Species	Recombinant Rabbit
Clonality	Monoclonal antibody
Clone No.	SR44-03
Purification	ProA affinity purified
Applications	WB, ICC/IF, IHC, IP, FC
Species Reactivity	Hu, Ms, Rt
Immunogen Description	recombinant protein
Other Names	Antigen p25 antibody CBX5 antibody CBX5_HUMAN antibody CG8409 antibody Chromobox 5 antibody Chromobox homolog 5 (HP1 alpha homolog, Drosophila) antibody Chromobox homolog 5 antibody Chromobox protein homolog 5 antibody Epididymis luminal protein 25 antibody HEL25 antibody Heterochromatin protein 1 alpha antibody Heterochromatin protein 1 antibody Heterochromatin protein 1 homolog alpha antibody HP1 alpha antibody HP1 alpha homolog antibody HP1 antibody HP1A antibody HP1Hs alpha antibody Su(var)205 antibody
Accession No.	Swiss-Prot#:P45973
Uniprot	P45973
GeneID	23468;
Calculated MW	22 kDa
Formulation	1*TBS (pH7.4), 1%BSA, 40%Glycerol. Preservative: 0.05% Sodium Azide.
Storage	Store at -20°C

Application Details

WB: 1:1,000-5,000 IHC: 1:50-1:200 ICC: 1:50-1:200 FC: 1:50-1:100

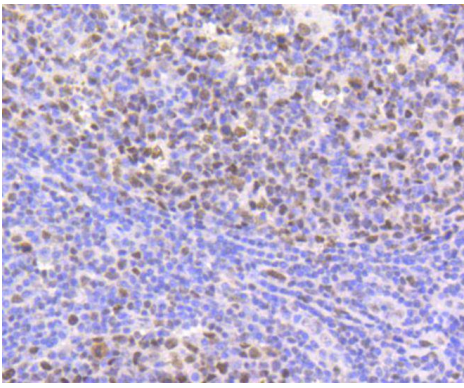
Images



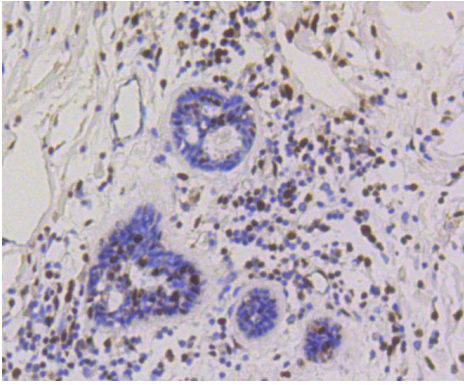
Western blot analysis of HP1 alpha on different cell lysates using anti-HP1 alpha antibody at 1/1,000 dilution. Positive control:

Lane 1: MCF-7

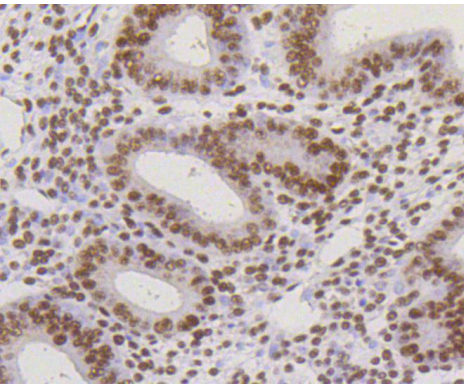
Lane 2: HeLa



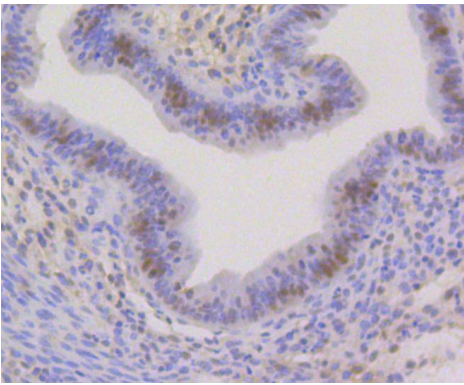
Immunohistochemical analysis of paraffin-embedded human tonsil tissue using anti-HP1 alpha antibody. Counter stained with hematoxylin.



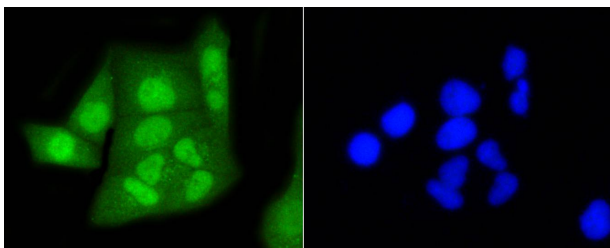
Immunohistochemical analysis of paraffin-embedded human breast carcinoma tissue using anti-HP1 alpha antibody. Counter stained with hematoxylin.



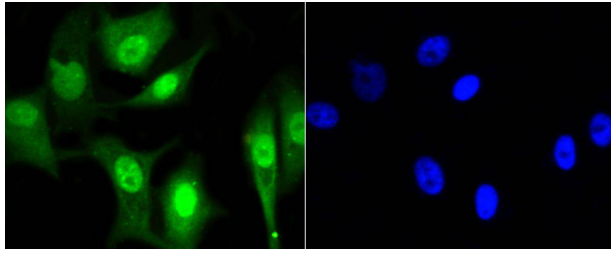
Immunohistochemical analysis of paraffin-embedded human uterus tissue using anti-HP1 alpha antibody. Counter stained with hematoxylin.



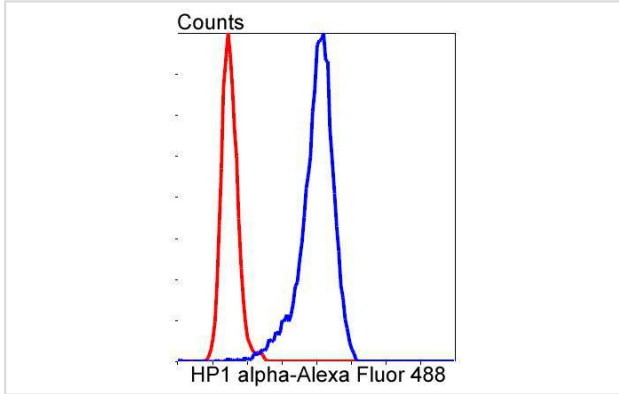
Immunohistochemical analysis of paraffin-embedded mouse uterus tissue using anti-HP1 alpha antibody. Counter stained with hematoxylin.



ICC staining HP1 alpha in HeLa cells (green). The nuclear counter stain is DAPI (blue). Cells were fixed in paraformaldehyde, permeabilised with 0.25% Triton X100/PBS.



ICC staining HP1 alpha in MCF-7 cells (green). The nuclear counter stain is DAPI (blue). Cells were fixed in paraformaldehyde, permeabilised with 0.25% Triton X100/PBS.



Flow cytometric analysis of SH-SY-5Y cells with HP1 alpha antibody at 1/50 dilution (blue) compared with an unlabelled control (cells without incubation with primary antibody; red). Alexa Fluor 488-conjugated goat anti rabbit IgG was used as the secondary antibody.

Background

The family of Heterochromatin Protein 1 (HP1) ("Chromobox Homolog", CBX) are highly conserved adapter proteins, which have important functions in the cell nucleus. These functions include gene repression by heterochromatin formation, transcriptional activation, regulation of binding of cohesion complexes to centromere, sequestration of genes to nuclear periphery, transcriptional arrest, maintenance of heterochromatin integrity, gene repression at single nucleosome level and gene repression by heterochromatinization of euchromatin. Three different paralogs of HP1 are found in mammals, HP1 α , HP1 β and HP1 γ .

References

Note: This product is for in vitro research use only