

## NFkB p105/p50 Rabbit mAb

Catalog No: #48680

Package Size: #48680-1 50ul #48680-2 100ul

Orders: order@signalwayantibody.com

Support: tech@signalwayantibody.com

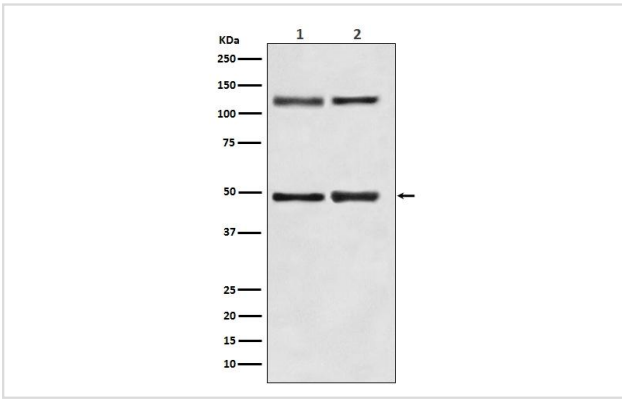
## Description

Product Name	NFkB p105/p50 Rabbit mAb
Clone No.	SZ20-01
Purification	Affinity-chromatography
Applications	WB, IHC
Species Reactivity	Hu, Ms, Rt
Immunogen Description	A synthesized peptide derived from human NF-κB (p105/p50)
Other Names	DKFZp686C01211 antibody DNA binding factor KBF1 antibody DNA binding factor KBF1 EBP1 antibody DNA-binding factor KBF1 antibody EBP 1 antibody EBP-1 antibody EBP1 antibody KBF1 antibody MGC54151 antibody NF kappa B antibody NF kappaB antibody NF kappabeta antibody NF kB1 antibody NFkappaB antibody NFkB 1 antibody NFkB p105 antibody NFkB p50 antibody Nfkb1 antibody NFkB1_HUMAN antibody Nuclear factor kappa B DNA binding subunit antibody Nuclear factor kappa-B, subunit 1 antibody Nuclear factor NF kappa B p105 subunit antibody Nuclear factor NF kappa B p50 subunit antibody Nuclear factor NF-kappa-B p50 subunit antibody Nuclear factor of kappa light chain gene enhancer in B cells 1 antibody Nuclear factor of kappa light polypeptide gene enhancer in B cells 1 antibody Nuclear factor of kappa light polypeptide gene enhancer in B-cells 1 antibody p105 antibody p50 antibody p84/NF-kappa-B1 p98 antibody Transcription factor NFkB1 antibody
Accession No.	Swiss-Prot#:P19838
Uniprot	P19838
GeneID	4790;
Calculated MW	50kDa/120kDa
Concentration	0.75mg/ml
Formulation	Rabbit IgG in phosphate buffered saline , pH 7.4, 150mM NaCl, 0.02% sodium azide and 50% glycerol.
Storage	Store at +4°C short term. Store at -20°C long term. Avoid freeze / thaw cycle.

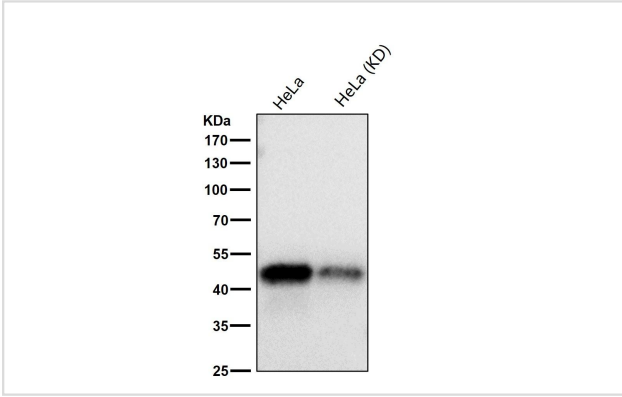
## Application Details

WB 1:500~1:2000 IHC 1:50~1:200

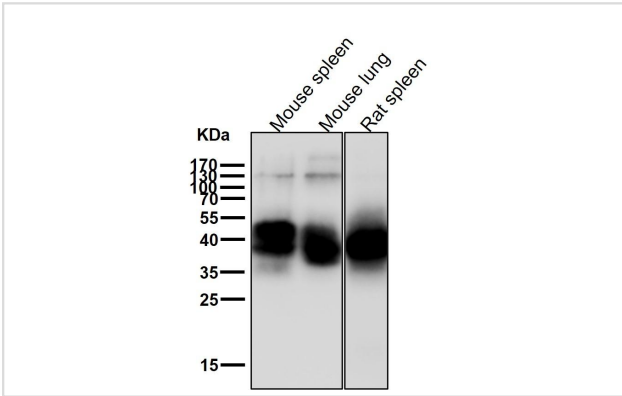
## Images



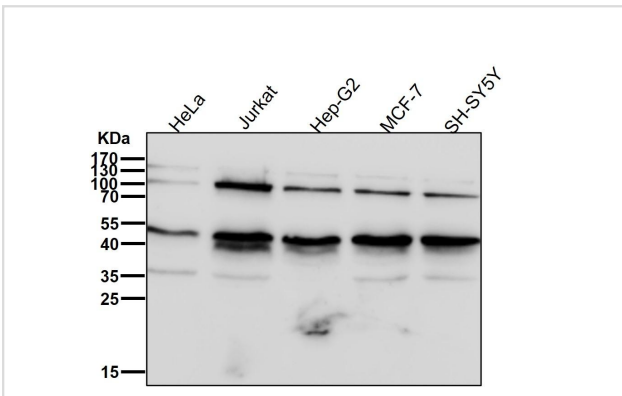
Western blot analysis of NF-kB p105/p50 expression in (1)PC-12 cell lysate;(2) NIH/3T3 cell lysate.



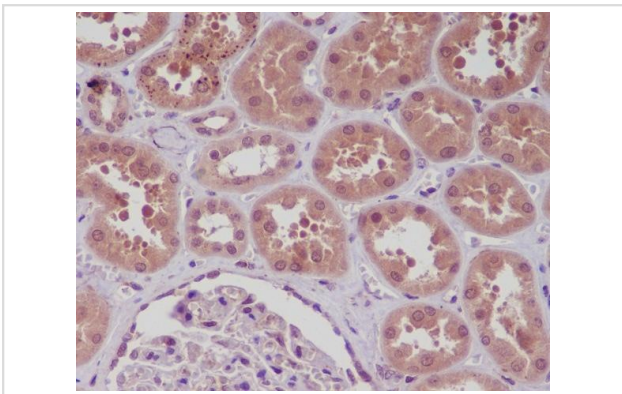
All lanes use the Antibody at 1:1K dilution for 1 hour at room temperature.



All lanes use the Antibody at 1:3K dilution for 1 hour at room temperature.



All lanes use the Antibody at 1:3K dilution for 1 hour at room temperature.



Immunohistochemical analysis of paraffin-embedded human kidney, using NF-kB p105/p50 Antibody.

## Background

---

NF- $\kappa$ B-p105 a transcription factor of the nuclear factor- $\kappa$ B (NF- $\kappa$ B) group. Undergoes cotranslational processing by the 26S proteasome to produce a 50 kD protein. The 105 kD protein is a Rel protein-specific transcription inhibitor and the 50 kD protein is a DNA binding subunit of NF- $\kappa$ B. NF- $\kappa$ B is a transcription regulator that is activated by various intra- and extra-cellular stimuli such as cytokines, oxidant-free radicals, ultraviolet irradiation, and bacterial or viral products.

---

Note: This product is for in vitro research use only