

IkB alpha Rabbit mAb

Catalog No: #48695



Package Size: #48695-1 50ul #48695-2 100ul

Orders: order@signalwayantibody.com
Support: tech@signalwayantibody.com

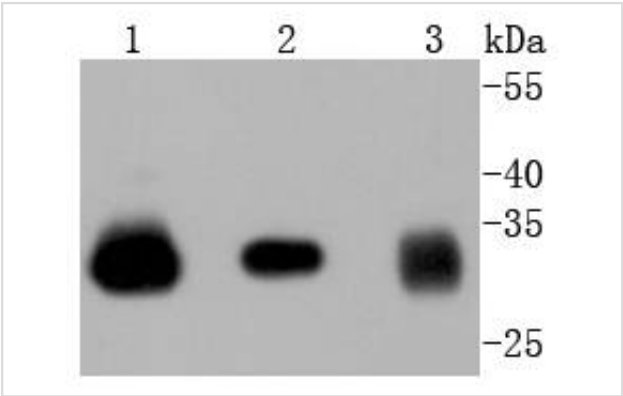
Description

Product Name	IkB alpha Rabbit mAb
Host Species	Recombinant Rabbit
Clonality	Monoclonal antibody
Clone No.	SZ00-07
Purification	ProA affinity purified
Applications	WB, ICC/IF, IHC, IP
Species Reactivity	Hu, Ms, Rt
Immunogen Description	recombinant protein
Other Names	I kappa B alpha antibody I-kappa-B-alpha antibody IkappaBalpha antibody IkB-alpha antibody IKBA antibody IKBA_HUMAN antibody IKBalpha antibody MAD 3 antibody MAD3 antibody Major histocompatibility complex enhancer-binding protein MAD3 antibody NF kappa B inhibitor alpha antibody NF-kappa-B inhibitor alpha antibody NFKBI antibody NFKBIA antibody Nuclear factor of kappa light chain gene enhancer in B cells antibody Nuclear factor of kappa light polypeptide gene enhancer in B cells inhibitor alpha antibody
Accession No.	Swiss-Prot#:P25963
Uniprot	P25963
GeneID	4792;
Calculated MW	34 kDa
Formulation	1*TBS (pH7.4), 1%BSA, 40%Glycerol. Preservative: 0.05% Sodium Azide.
Storage	Store at -20°C

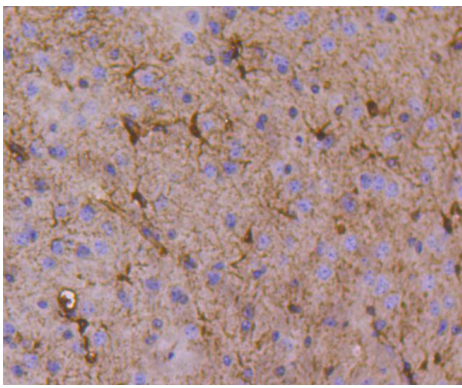
Application Details

WB: 1:1,000-5,000IHC: 1:50-1:200ICC: 1:50-1:200

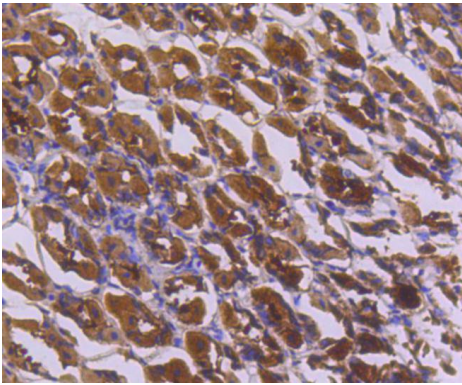
Images



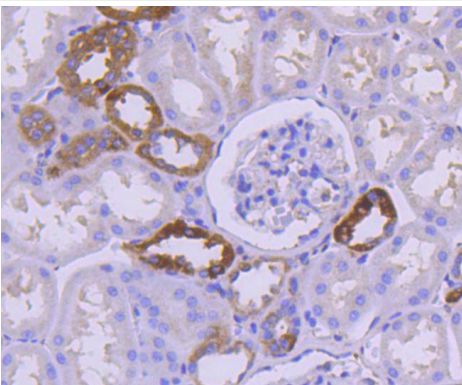
Western blot analysis of IkB alpha on different lysates using anti-IkB alpha antibody at 1/1,000 dilution. Positive control:
Lane 1: PC-12 Lane 2: NIH/3T3 Lane 3: Hela



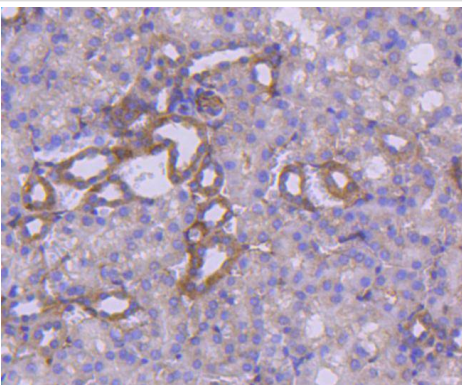
Immunohistochemical analysis of paraffin-embedded mouse brain tissue using anti-IKB alpha antibody. Counter stained with hematoxylin.



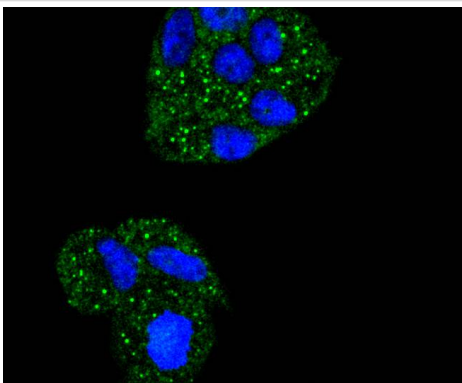
Immunohistochemical analysis of paraffin-embedded mouse stomach tissue using anti-IKB alpha antibody. Counter stained with hematoxylin.



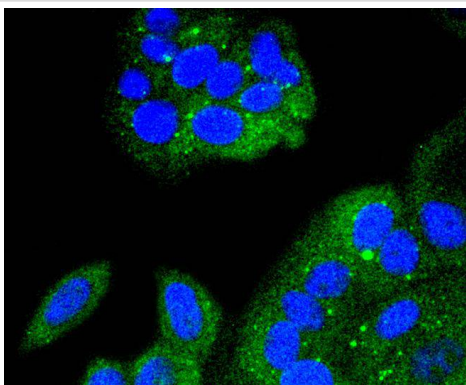
Immunohistochemical analysis of paraffin-embedded human kidney tissue using anti-IKB alpha antibody. Counter stained with hematoxylin.



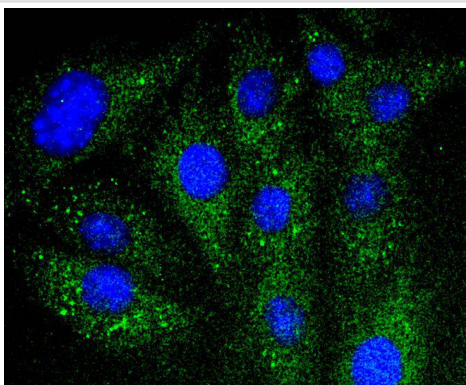
Immunohistochemical analysis of paraffin-embedded mouse kidney tissue using anti-IKB alpha antibody. Counter stained with hematoxylin.



ICC staining IKB alpha in HeLa cells (green). The nuclear counter stain is DAPI (blue). Cells were fixed in paraformaldehyde, permeabilised with 0.25% Triton X100/PBS.



ICC staining IKB alpha in MCF-7 cells (green). The nuclear counter stain is DAPI (blue). Cells were fixed in paraformaldehyde, permeabilised with 0.25% Triton X100/PBS.



ICC staining IKB alpha in SHG-44 cells (green). The nuclear counter stain is DAPI (blue). Cells were fixed in paraformaldehyde, permeabilised with 0.25% Triton X100/PBS.

Background

NFKB1 or NFKB2 is bound to REL, RELA, or RELB to form the NFKB complex. The NFKB complex is inhibited by I-kappa-B proteins, which inactivate NF-kappa-B by trapping it in the cytoplasm. Phosphorylation of serine residues on the I-kappa-B proteins by kinases marks them for destruction via the ubiquitination pathway, thereby allowing activation of the NF-kappa-B complex. Activated NFKB complex translocates into the nucleus and binds DNA at kappa-B-binding motifs such as 5-prime GGGRNNYYCC 3-prime or 5-prime HGGARNYYCC 3-prime.

References

Note: This product is for in vitro research use only