

## Smad4 Rabbit mAb

Catalog No: #48699

Package Size: #48699-1 50ul #48699-2 100ul

Orders: [order@signalwayantibody.com](mailto:order@signalwayantibody.com)Support: [tech@signalwayantibody.com](mailto:tech@signalwayantibody.com)

## Description

Product Name	Smad4 Rabbit mAb
Host Species	Recombinant Rabbit
Clonality	Monoclonal antibody
Clone No.	SP05-05
Purification	ProA affinity purified
Applications	WB, ICC/IF, IHC, FC
Species Reactivity	Hu, Ms, Rt
Immunogen Description	recombinant protein
Other Names	(Small) Mothers Against Decapentaplegic antibody Deleted in Pancreatic Carcinoma 4 antibody Deleted in Pancreatic Carcinoma antibody Deleted in pancreatic carcinoma locus 4 antibody Deletion target in pancreatic carcinoma 4 antibody DPC 4 antibody DPC4 antibody hSMAD4 antibody JIP antibody MAD homolog 4 antibody MAD mothers against decapentaplegic Drosophila homolog 4 antibody MAD mothers against decapentaplegic homolog 4 antibody MADH 4 antibody MADH4 antibody Med antibody Medea antibody Mothers against decapentaplegic homolog 4 antibody Mothers against decapentaplegic, Drosophila, homolog of, 4 antibody Mothers against DPP homolog 4 antibody MYHRS antibody OTTHUMP00000163548 antibody SMA- and MAD-related protein 4 antibody SMAD 4 antibody SMAD family member 4 antibody SMAD mothers against DPP homolog 4 antibody SMAD4 antibody SMAD4_HUMAN antibody
Accession No.	Swiss-Prot#:Q13485
Uniprot	Q13485
GeneID	4089;
Calculated MW	60 kDa
Formulation	1*TBS (pH7.4), 1%BSA, 40%Glycerol. Preservative: 0.05% Sodium Azide.
Storage	Store at -20°C

## Application Details

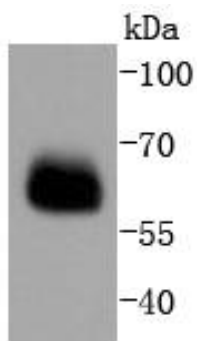
WB: 1:1,000-1:2,000

IHC: 1:50-1:200

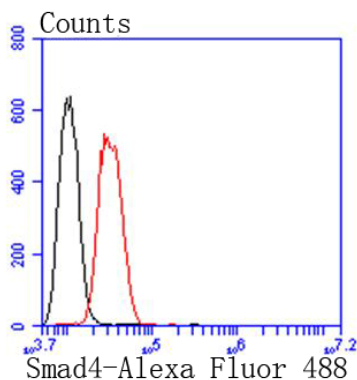
ICC: 1:50-1:200

FC: 1:50-1:100

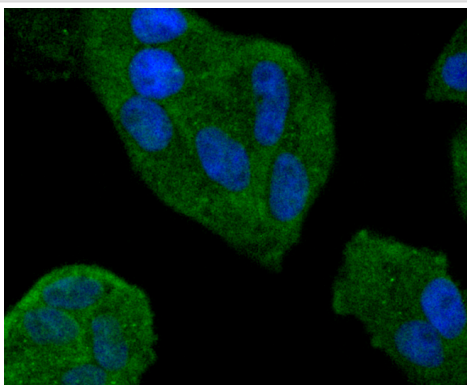
## Images



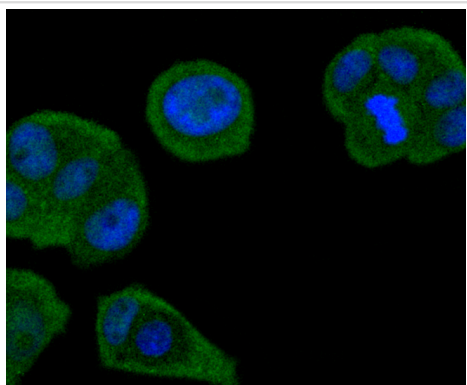
Western blot analysis of Smad4 on PC-12 cells lysates using anti-Smad4 antibody at 1/1,000 dilution.



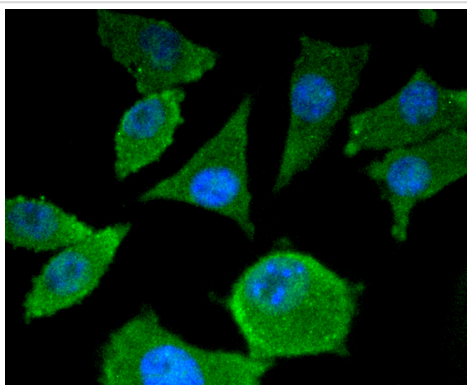
Flow cytometric analysis of SH-SY-5Y cells with Smad4 antibody at 1/50 dilution (red) compared with an unlabelled control (cells without incubation with primary antibody; black). Alexa Fluor 488-conjugated goat anti rabbit IgG was used as the secondary antibody.



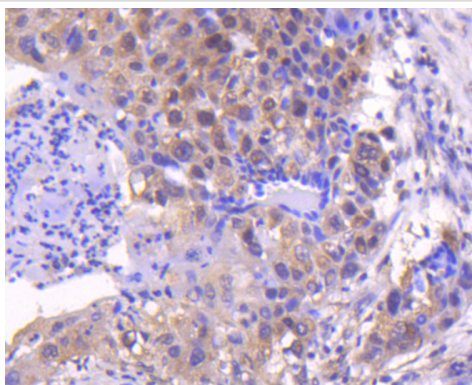
ICC staining Smad4 in HeLa cells (green). The nuclear counter stain is DAPI (blue). Cells were fixed in paraformaldehyde, permeabilised with 0.25% Triton X100/PBS.



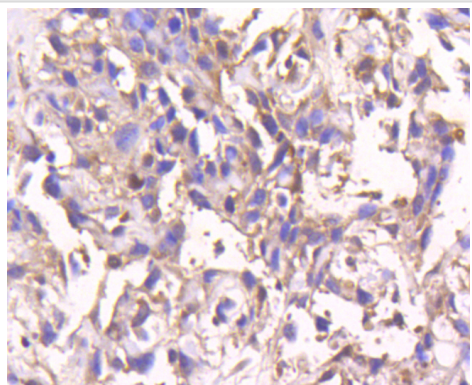
ICC staining Smad4 in MCF-7 cells (green). The nuclear counter stain is DAPI (blue). Cells were fixed in paraformaldehyde, permeabilised with 0.25% Triton X100/PBS.



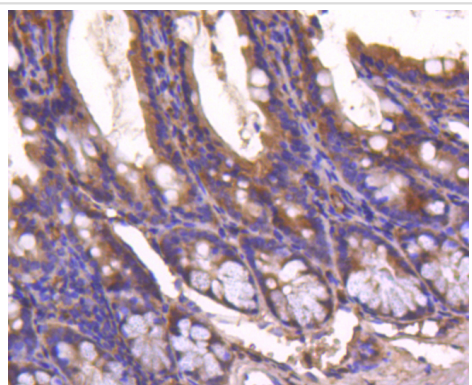
ICC staining Smad4 in SH-SY-5Y cells (green). The nuclear counter stain is DAPI (blue). Cells were fixed in paraformaldehyde, permeabilised with 0.25% Triton X100/PBS.



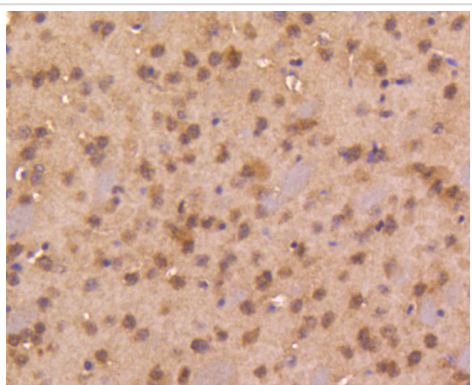
Immunohistochemical analysis of paraffin-embedded human lung cancer tissue using anti-Smad4 antibody. Counter stained with hematoxylin.



Immunohistochemical analysis of paraffin-embedded human breast carcinoma tissue using anti-Smad4 antibody. Counter stained with hematoxylin.



Immunohistochemical analysis of paraffin-embedded mouse colon tissue using anti-Smad4 antibody. Counter stained with hematoxylin.



Immunohistochemical analysis of paraffin-embedded mouse brain tissue using anti-Smad4 antibody. Counter stained with hematoxylin.

## Background

Smad proteins, the mammalian homologs of the *Drosophila* Mothers against dpp (Mad) have been implicated as downstream effectors of TGF $\beta$ /BMP signaling. Smad1 (also designated Madr1 or JV4-1), Smad5 and mammalian Smad8 (also designated Smad9 or MADH6) are effectors of BMP2 and BMP4 function while Smad2 (also designated Madr2 or JV18-1) and Smad3 are involved in TGF $\beta$  and activin-mediated growth modulation. Smad4 (also designated DPC4) has been shown to mediate all of the above activities through interaction with various Smad family members. Smad6 and Smad7 regulate the response to activin/TGF $\beta$  signaling by interfering with TGF $\beta$ -mediated phosphorylation of other Smad family members.

## References

---

Note: This product is for in vitro research use only