

ERG Rabbit mAb

Catalog No: #48702



Package Size: #48702-1 50ul #48702-2 100ul

Orders: order@signalwayantibody.com

Support: tech@signalwayantibody.com

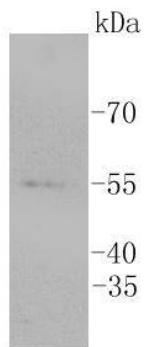
Description

Product Name	ERG Rabbit mAb
Host Species	Recombinant Rabbit
Clonality	Monoclonal antibody
Clone No.	SP06-04
Purification	ProA affinity purified
Applications	WB, ICC/IF, IHC, CHIP
Species Reactivity	Hu, Ms, Rt
Immunogen Description	recombinant protein
Other Names	Avian erythroblastosis virus E-26 (v-ets) oncogene related antibody D030036I24Rik antibody Erg 3 antibody Erg antibody ERG/EWS fusion gene, included antibody ERG/FUS fusion gene, included antibody ERG/TMPSSR2 fusion gene, included antibody ERG_HUMAN antibody ERG1, included antibody ERG2, included antibody ets related antibody ETS-related gene antibody KCNH2 antibody Oncogene ERG antibody p55 antibody TMPRSS2/ERG fusion antibody transcriptional regulator ERG (transforming protein ERG) antibody Transcriptional regulator ERG antibody Transforming protein ERG antibody v ets avian erythroblastosis virus E26 oncogene antibody v ets avian erythroblastosis virus E26 oncogene related antibody v ets erythroblastosis virus E26 oncogene homolog antibody v ets erythroblastosis virus E26 oncogene like antibody v ets erythroblastosis virus E26 oncogene like isoform 2 antibody v-ets erythroblastosis virus E26 oncogene antibody v-ets erythroblastosis virus E26 oncogene homolog (avian) antibody V-ets erythroblastosis virus E26 oncogene like (Avian), isoform CRA_e antibody
Accession No.	Swiss-Prot#:P11308
Uniprot	P11308
GeneID	2078;
Calculated MW	55 kDa
Formulation	1*TBS (pH7.4), 1%BSA, 40%Glycerol. Preservative: 0.05% Sodium Azide.
Storage	Store at -20°C

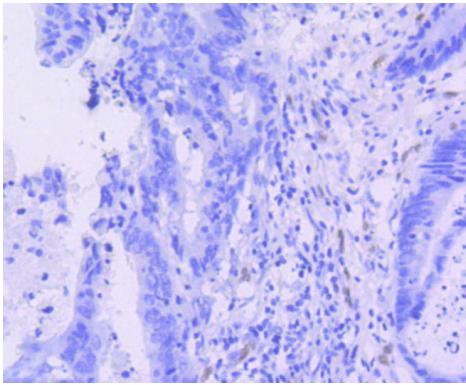
Application Details

WB: 1:1,000 IHC: 1:50-1:200 ICC: 1:50-1:200

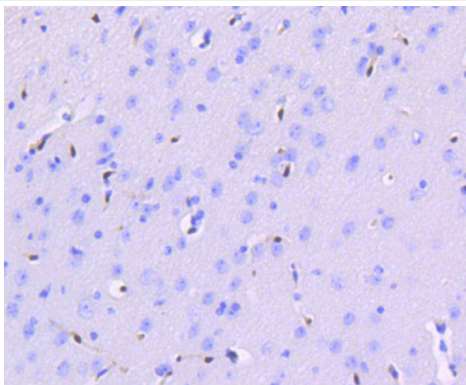
Images



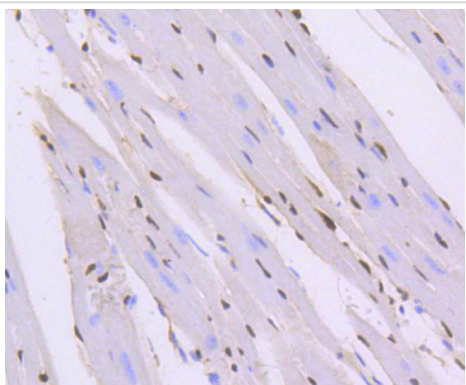
Western blot analysis of ERG on Jurkat cell lysates using anti-ERG antibody at 1/1,000 dilution.



Immunohistochemical analysis of paraffin-embedded human colon cancer tissue using anti-ERG antibody. Counter stained with hematoxylin.



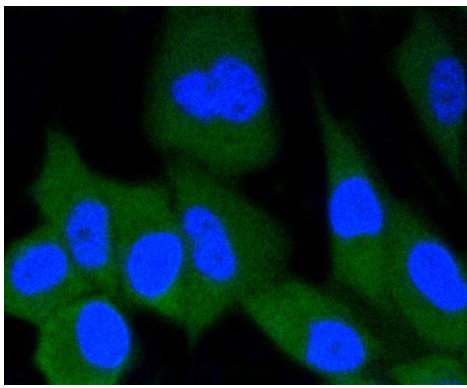
Immunohistochemical analysis of paraffin-embedded mouse brain tissue using anti-ERG antibody. Counter stained with hematoxylin.



Immunohistochemical analysis of paraffin-embedded mouse heart tissue using anti-ERG antibody. Counter stained with hematoxylin.



ICC staining ERG in CRC cells (green). The nuclear counter stain is DAPI (blue). Cells were fixed in paraformaldehyde, permeabilised with 0.25% Triton X100/PBS.



ICC staining ERG in PC-3M cells (green). The nuclear counter stain is DAPI (blue). Cells were fixed in paraformaldehyde, permeabilised with 0.25% Triton X100/PBS.

Background

Ets-1 is the prototype member of a family of genes identified on the basis of homology to the v-Ets oncogene isolated from the E26 erythroblastosis virus. This family of genes currently includes Ets-1, Ets-2, Erg-1C3, Elk-1, Elf-1, Elf-5, NERF, PU.1, PEA3, ERM, FEV, ER8I, Fli-1, TEL, Spi-B, ESE-1, ESE-3A, Net, ABT1 and ERF. Members of the Ets gene family exhibit varied patterns of tissue expression, and share a highly conserved carboxy-terminal domain containing a sequence related to the SV40 large T antigen nuclear localization signal sequence. This conserved domain is essential for Ets-1 binding to DNA and is likely to be responsible for the DNA binding activity of all members of the Ets gene family. Several of these proteins have been shown to recognize similar motifs in DNA that share a centrally located 5'-GGAA-3' element. Erg genes encode for multiple proteins due to alternative splicing and alternative usage of initiation codons.

References

Note: This product is for in vitro research use only