

Smad2 Rabbit mAb

Catalog No: #48703

Package Size: #48703-1 50ul #48703-2 100ul

Orders: order@signalwayantibody.com

Support: tech@signalwayantibody.com

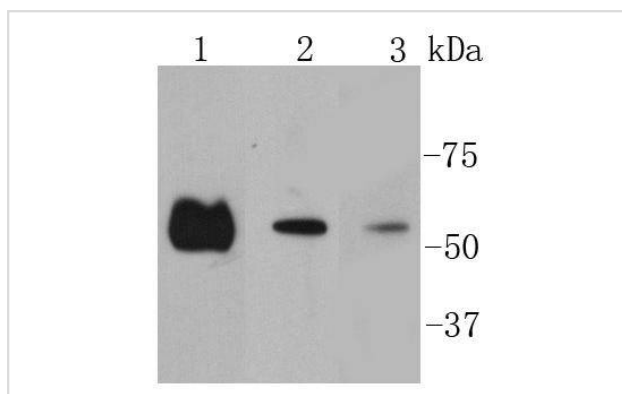
Description

Product Name	Smad2 Rabbit mAb
Host Species	Recombinant Rabbit
Clonality	Monoclonal antibody
Clone No.	SP06-05
Purification	ProA affinity purified
Applications	WB, ICC, IHC, IP, FC
Species Reactivity	Hu, Ms, Rt
Immunogen Description	recombinant protein
Other Names	Drosophila, homolog of, MADR2 antibody hMAD-2 antibody HsMAD2 antibody JV18 antibody JV18-1 antibody JV181 antibody MAD antibody MAD homolog 2 antibody MAD Related Protein 2 antibody Mad-related protein 2 antibody MADH2 antibody MADR2 antibody MGC22139 antibody MGC34440 antibody Mother against DPP homolog 2 antibody Mothers against decapentaplegic homolog 2 antibody Mothers against decapentaplegic, Drosophila, homolog of, 2 antibody Mothers against DPP homolog 2 antibody OTTHUMP00000163489 antibody Sma and Mad related protein 2 antibody Sma- and Mad-related protein 2 MAD antibody SMAD 2 antibody SMAD family member 2 antibody SMAD, mothers against DPP homolog 2 antibody SMAD2 antibody SMAD2_HUMAN antibody
Accession No.	Swiss-Prot#:Q15796
Uniprot	Q15796
GeneID	4087;
Calculated MW	58 kDa
Formulation	1*TBS (pH7.4), 1%BSA, 40%Glycerol. Preservative: 0.05% Sodium Azide.
Storage	Store at -20°C

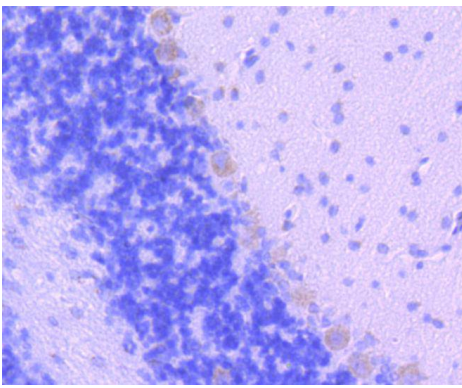
Application Details

WB: 1:1,000-1:2,000 IHC: 1:50-1:200 ICC: 1:50-1:200FC: 1:50-1:100

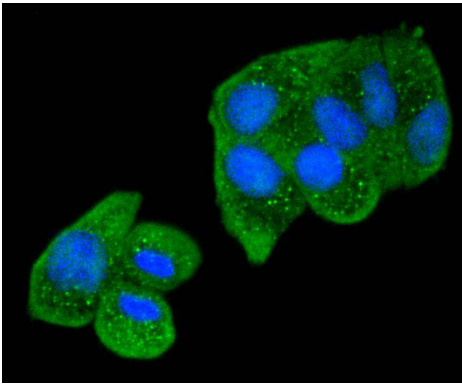
Images



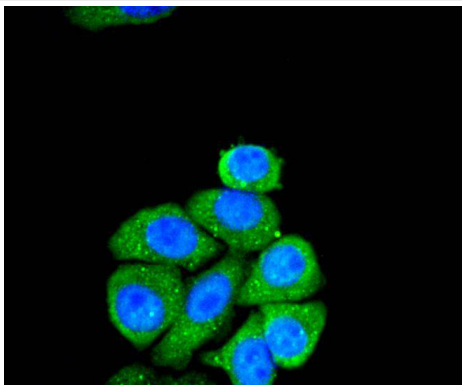
Western blot analysis of Smad2 on different lysates using anti-Smad2 antibody at 1/1,000 dilution. Positive control:
 Lane 1: Hela
 Lane 2: A431
 Lane 3: PC12



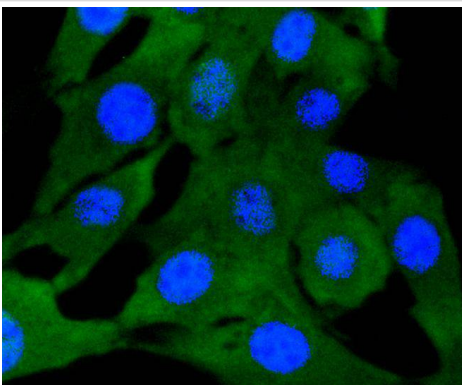
Immunohistochemical analysis of paraffin-embedded rat cerebellum tissue using anti-Smad2 antibody. Counter stained with hematoxylin.



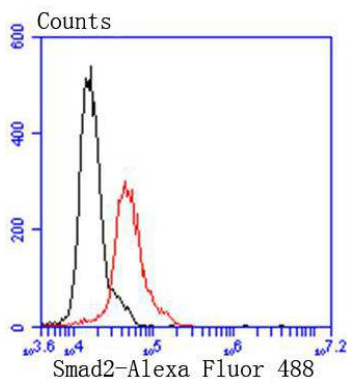
ICC staining Smad2 in HeLa cells (green). The nuclear counter stain is DAPI (blue). Cells were fixed in paraformaldehyde, permeabilised with 0.25% Triton X100/PBS.



ICC staining Smad2 in HepG2 cells (green). The nuclear counter stain is DAPI (blue). Cells were fixed in paraformaldehyde, permeabilised with 0.25% Triton X100/PBS.



ICC staining Smad2 in NIH/3T3 cells (green). The nuclear counter stain is DAPI (blue). Cells were fixed in paraformaldehyde, permeabilised with 0.25% Triton X100/PBS.



Flow cytometric analysis of NIH/3T3 cells with Smad2 antibody at 1/50 dilution (red) compared with an unlabelled control (cells without incubation with primary antibody; black). Alexa Fluor 488-conjugated goat anti rabbit IgG was used as the secondary antibody.

Background

Smad proteins, the mammalian homologs of the *Drosophila* mothers against decapentaplegic (Mad), have been implicated as downstream effectors of TGF β /BMP signaling. Smad1 (also designated Madr1 or JV4-1) and Smad5 are effectors of BMP-2 and BMP-4 function, while Smad2 (also designated Madr2 or JV18-1) and Smad3 are involved in TGF β and Activin-mediated growth modulation. Smad4 (also designated DPC4) has been shown to mediate all of the above activities through interaction with various Smad family members. Smad6 and Smad7 regulate the response to Activin/TGF β signaling by interfering with TGF β -mediated phosphorylation of other Smad proteins.

References

Note: This product is for in vitro research use only