

GFP Rabbit mAb

Catalog No: #48704

Package Size: #48704-1 50ul #48704-2 100ul

Orders: order@signalwayantibody.comSupport: tech@signalwayantibody.com

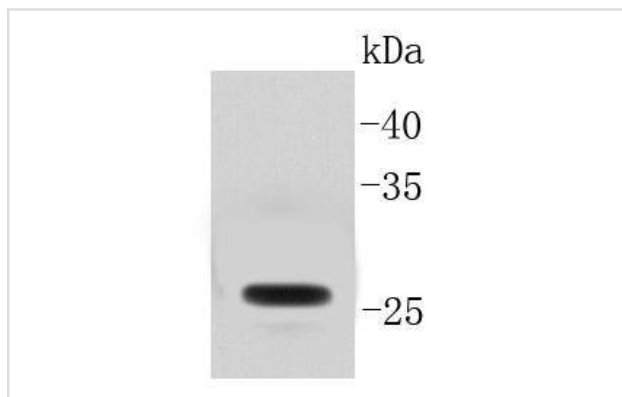
Description

Product Name	GFP Rabbit mAb
Host Species	Recombinant Rabbit
Clonality	Monoclonal antibody
Clone No.	SP00-68
Purification	ProA affinity purified
Applications	WB IHC ICC/IF
Immunogen Description	recombinant protein
Other Names	GFP antibody Green fluorescent protein antibody yfp antibody
Accession No.	Swiss-Prot#:
Calculated MW	26 kDa
Formulation	1*TBS (pH7.4), 1%BSA, 40%Glycerol. Preservative: 0.05% Sodium Azide.
Storage	Store at -20°C

Application Details

WB: 1:10,000-1:100,000 IHC: 1:500-1:1,000

Images



Western blot analysis of GFP on K562 cells transfected with GFP using anti-GFP antibody at 1/100,000 dilution.

Background

The green fluorescent protein (GFP) was originally identified as a protein involved in the bioluminescence of the jellyfish *Aequorea victoria*. GFP cDNA produces a fluorescent product when expressed in prokaryotic cells, without the need for exogenous substrates or cofactors, making GFP a useful tool for monitoring gene expression and protein localization *in vivo*. Several GFP mutants have been developed, including EGFP, which fluoresce more intensely than the wildtype GFP and have shifted excitation maxima, making them useful for FACS and fluorescence microscopy as well as double-labeling applications. GFP is widely used in expression vectors as a fusion protein tag, allowing expression and monitoring of heterologous proteins fused to GFP.

References

Note: This product is for in vitro research use only