

## ALDH1A1 Rabbit mAb

Catalog No: #48723

Package Size: #48723-1 50ul #48723-2 100ul

Orders: [order@signalwayantibody.com](mailto:order@signalwayantibody.com)Support: [tech@signalwayantibody.com](mailto:tech@signalwayantibody.com)

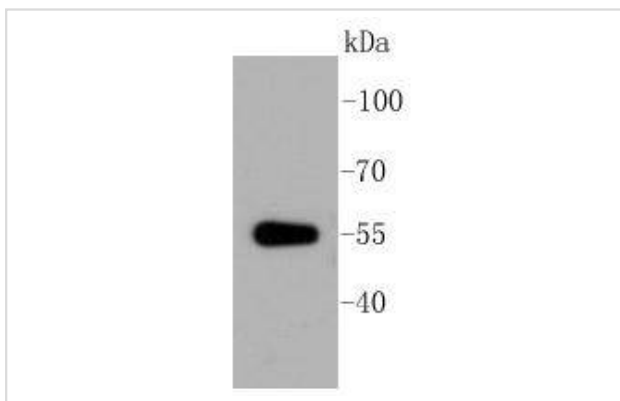
## Description

Product Name	ALDH1A1 Rabbit mAb
Host Species	Recombinant Rabbit
Clonality	Monoclonal antibody
Clone No.	SY11-02
Purification	ProA affinity purified
Applications	WB, IHC, IP
Species Reactivity	Hu, Ms, Rt
Immunogen Description	recombinant protein
Other Names	Acetaldehyde dehydrogenase 1 antibody AHD2 antibody AL1A1_HUMAN antibody ALDC antibody Aldehyde dehydrogenase 1 family member A1 antibody Aldehyde dehydrogenase 1 soluble antibody Aldehyde dehydrogenase 1A1 antibody Aldehyde dehydrogenase antibody Aldehyde dehydrogenase cytosolic antibody Aldehyde dehydrogenase family 1 member A1 antibody Aldehyde dehydrogenase liver cytosolic antibody ALDH 1 antibody ALDH 1A1 antibody ALDH class 1 antibody ALDH, liver cytosolic antibody ALDH-E1 antibody ALDH1 A1 antibody ALDH1 antibody ALDH11 antibody ALDH1A1 antibody ALHDII antibody cytosolic antibody epididymis luminal protein 12 antibody epididymis luminal protein 9 antibody epididymis secretory sperm binding protein Li 53e antibody HEL-S-53e antibody MGC2318 antibody PUMB1 antibody RALDH 1 antibody RaLDH1 antibody Retinal dehydrogenase 1 antibody
Accession No.	Swiss-Prot#:P00352
Uniprot	P00352
GeneID	216;
Calculated MW	55 kDa
Formulation	1*TBS (pH7.4), 1%BSA, 40%Glycerol. Preservative: 0.05% Sodium Azide.
Storage	Store at -20°C

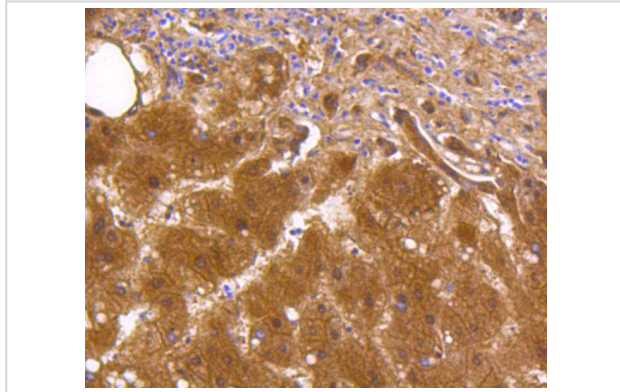
## Application Details

WB: 1:1,000-1:2,000 IHC: 1:50-1:200

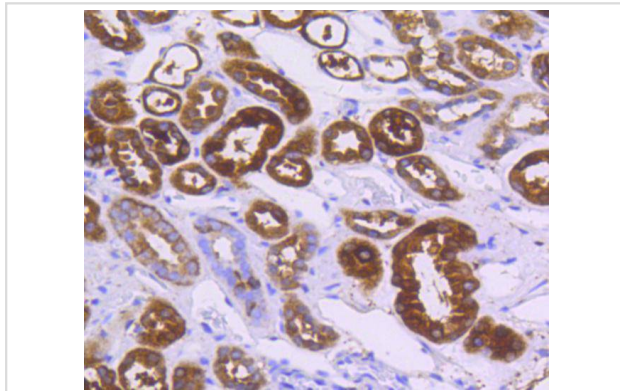
## Images



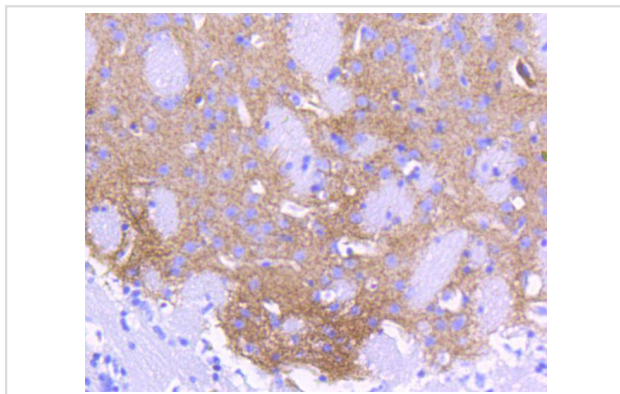
Western blot analysis of ALDH1A1 on mouse lung lysates using anti-ALDH1A1 antibody at 1/1,000 dilution.



Immunohistochemical analysis of paraffin-embedded human liver tissue using anti-ALDH1A1 antibody. Counter stained with hematoxylin.



Immunohistochemical analysis of paraffin-embedded human kidney tissue using anti-ALDH1A1 antibody. Counter stained with hematoxylin.



Immunohistochemical analysis of paraffin-embedded mouse brain tissue using anti-ALDH1A1 antibody. Counter stained with hematoxylin.

## Background

Aldehyde dehydrogenases (ALDHs) mediate NADP<sup>+</sup>-dependent oxidation of aldehydes into acids during the detoxification of alcohol-derived acetaldehyde; metabolism of corticosteroids, biogenic amines and neurotransmitters; and lipid peroxidation. ALDH1A1, also designated retinal dehydrogenase 1 (RALDH1 or RALDH1), aldehyde dehydrogenase family 1 member A1, aldehyde dehydrogenase cytosolic, ALDHII, ALDH-E1 or ALDH E1, is a retinal dehydrogenase that participates in the biosynthesis of retinoic acid (RA). There are two major liver isoforms of ALDH1 that can localize to cytosolic or mitochondrial space. The ALDH1A2 (RALDH2, RALDH2-T) gene produces three different transcripts and also catalyzes the synthesis of RA from retinaldehyde. ALDH1A3 (ALDH6, RALDH3, ALDH1A6) is a 37 kb gene that consists of 13 exons and produces a major transcript of approximately 3.5 kb most abundant in salivary gland, stomach and kidney. ALDH3A1 (stomach type, ALDH3, ALDHIII) forms a

cytoplasmic homodimer that preferentially oxidizes aromatic aldehyde substrates. ALDH genes upregulate as a part of the oxidative stress response, and appear to be abundant in certain tumors that have an accelerated metabolism toward chemotherapy agents.

## References

---

Note: This product is for in vitro research use only