

CD20 Rabbit mAb

Catalog No: #48726



Package Size: #48726-1 50ul #48726-2 100ul

Orders: order@signalwayantibody.comSupport: tech@signalwayantibody.com

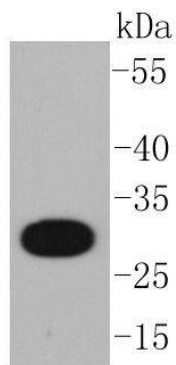
Description

Product Name	CD20 Rabbit mAb
Host Species	Recombinant Rabbit
Clonality	Monoclonal antibody
Clone No.	SY12-01
Purification	ProA affinity purified
Applications	WB, IHC, IP
Species Reactivity	Hu, Monkey
Immunogen Description	recombinant protein
Other Names	APY antibody ATOPY antibody B lymphocyte antigen CD20 antibody B Lymphocyte Cell Surface Antigen B1 antibody B-lymphocyte antigen CD20 antibody B-lymphocyte cell-surface antigen B1 antibody B-lymphocyte surface antigen B1 antibody B1 antibody Bp 35 antibody Bp35 antibody CD 20 antibody CD20 antibody CD20 antigen antibody CD20 receptor antibody CD20_HUMAN antibody CVID5 antibody Fc epsilon receptor I beta chain antibody Fc Fragment of IgE high affinity I receptor for beta polypeptide antibody FCER1B antibody High affinity immunoglobulin epsilon receptor subunit beta antibody IgE Fc receptor subunit beta antibody IGEL antibody IGER antibody IGHHER antibody LEU 16 antibody LEU16 antibody leukocyte surface antigen Leu 16 antibody Leukocyte surface antigen Leu-16 antibody Ly44 antibody Membrane spanning 4 domains A1 antibody Membrane spanning 4 domains subfamily A member 2 antibody Membrane-spanning 4-domains subfamily A member 1 antibody MS4A1 antibody MS4A2 antibody S7 antibody
Accession No.	Swiss-Prot#:P11836
Uniprot	P11836
GeneID	931;
Calculated MW	33 kDa
Formulation	1*TBS (pH7.4), 1%BSA, 40%Glycerol. Preservative: 0.05% Sodium Azide.
Storage	Store at -20°C

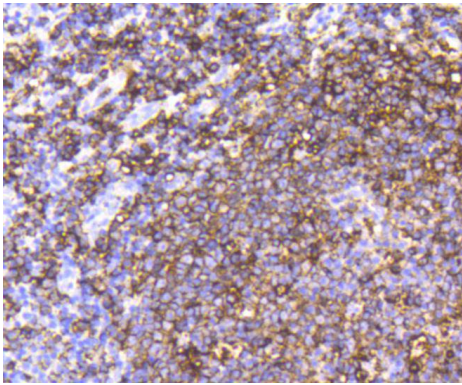
Application Details

WB: 1:1,000-5,000 IHC: 1:50-1:200

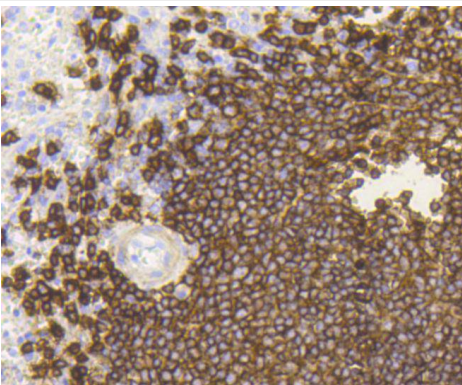
Images



Western blot analysis of CD20 on Raji cell lysates using anti-CD20 antibody at 1/1,000 dilution.



Immunohistochemical analysis of paraffin-embedded human tonsil tissue using anti-CD20 antibody. Counter stained with hematoxylin.



Immunohistochemical analysis of paraffin-embedded human spleen tissue using anti-CD20 antibody. Counter stained with hematoxylin.

Background

CD20 is a leukocyte surface antigen consisting of four transmembrane regions and cytoplasmic N- and C-termini. The cytoplasmic domain of CD20 contains multiple phosphorylation sites, leading to additional isoforms. CD20 is expressed primarily on B cells but has also been detected on both normal and neoplastic T cells. CD20 functions as a calcium-permeable cation channel, and it is known to accelerate the G0 to G1 progression induced by IGF-1. CD20 is activated by the IGF-1 receptor via the alpha subunits of the heterotrimeric G proteins. Activation of CD20 significantly increases DNA synthesis and is thought to involve basic helix-loop-helix leucine zipper transcription factors.

References

Note: This product is for in vitro research use only