

Tau Polyclonal Antibody

Catalog No: #41481

Package Size: #41481-1 50ul #41481-2 100ul

Orders: order@signalwayantibody.comSupport: tech@signalwayantibody.com

Description

Product Name	Tau Polyclonal Antibody
Host Species	Rabbit
Clonality	Polyclonal
Purification	The antibody was affinity-purified from rabbit antiserum by affinity-chromatography using epitope-specific immunogen.
Applications	WB IHC IF ELISA
Species Reactivity	Hu Ms Rt
Specificity	Tau Polyclonal Antibody detects endogenous levels of Tau protein.
Immunogen Type	peptide
Immunogen Description	Synthesized peptide derived from human Tau around the non-phosphorylation site of S262.
Target Name	Tau
Other Names	MAPT; MAPTL; MTBT1; TAU; Microtubule-associated protein tau; Neurofibrillary tangle protein; Paired helical filament-tau; PHF-tau
Accession No.	Swiss-Prot: P10636NCBI Gene ID: 4137
Uniprot	P10636
GeneID	4137;
SDS-PAGE MW	78kd
Concentration	1mg/ml
Formulation	Liquid in PBS containing 50% glycerol, 0.5% BSA and 0.02% sodium azide.
Storage	Store at -20°C/1 year

Application Details

Western Blot: 1/500 - 1/2000.

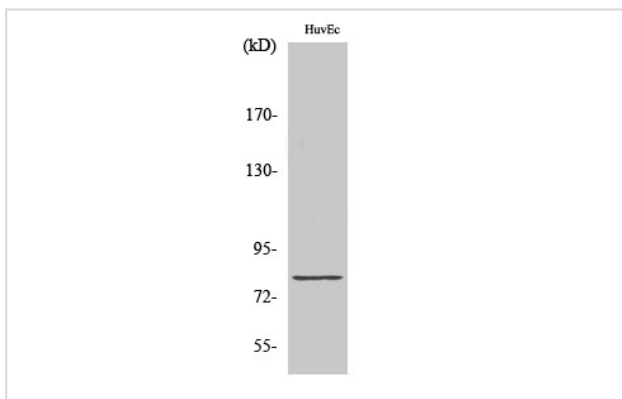
Immunohistochemistry: 1/100 - 1/300.

Immunofluorescence: 1/200 - 1/1000.

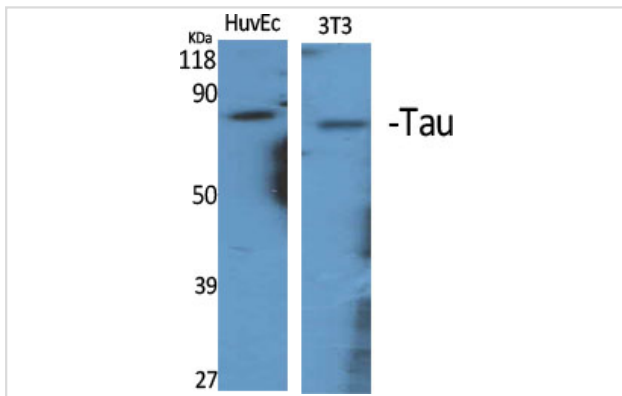
ELISA: 1/20000.

Not yet tested in other applications.

Images



Western Blot analysis of HuvEc cells using Tau Polyclonal Antibody



Western Blot analysis of HuvEc NIH-3T3 cells using Tau Polyclonal Antibody

Note: This product is for in vitro research use only