

## Phospho-Smad5(S463/465) Rabbit mAb

Catalog No: #13348

Package Size: #13348-1 50ul #13348-2 100ul

Orders: order@signalwayantibody.com

Support: tech@signalwayantibody.com

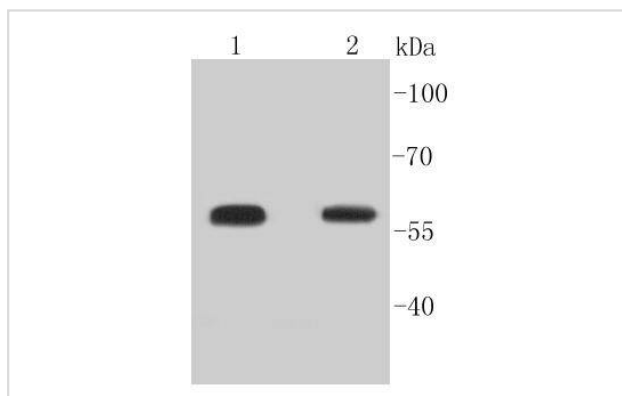
## Description

Product Name	Phospho-Smad5(S463/465) Rabbit mAb
Host Species	Rabbit
Clonality	Monoclonal
Clone No.	SY09-03
Purification	ProA affinity purified
Applications	WB, ICC, IHC
Species Reactivity	Hu, Ms, Rt
Immunogen Description	Synthetic phospho-peptide corresponding to residues surrounding Ser463 and 465 of human Smad5.
Other Names	DKFZp781C1895 antibody DKFZp781O1323 antibody Dwfc antibody hSmad5 antibody JV5 1 antibody JV5-1 antibody MAD homolog 5 antibody MAD, mothers against decapentaplegic homolog 5 antibody MADH 5 antibody MADH5 antibody Mothers against decapentaplegic homolog 5 antibody mothers against decapentaplegic, drosophila, homolog of, 5 antibody Mothers against DPP homolog 5 antibody MusMLP antibody SMA and MAD related protein 5 antibody SMAD 5 antibody SMAD family member 5 antibody SMAD, mothers against DPP homolog 5 antibody Smad5 antibody SMAD5_HUMAN antibody
Accession No.	Swiss-Prot#:Q99717
Uniprot	Q99717
GeneID	4090;
Calculated MW	58 kDa
Formulation	1*TBS (pH7.4), 1%BSA, 40%Glycerol. Preservative: 0.05% Sodium Azide.
Storage	Store at -20°C

## Application Details

WB: 1:1,000-1:2,000 IHC: 1:50-1:200 ICC: 1:50-1:200

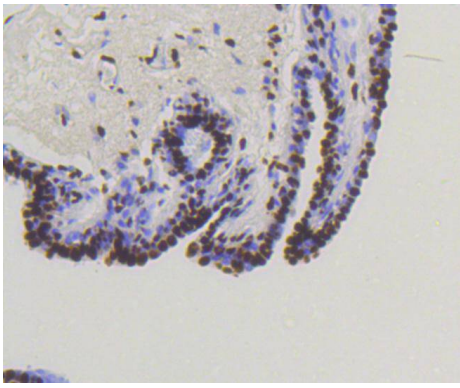
## Images



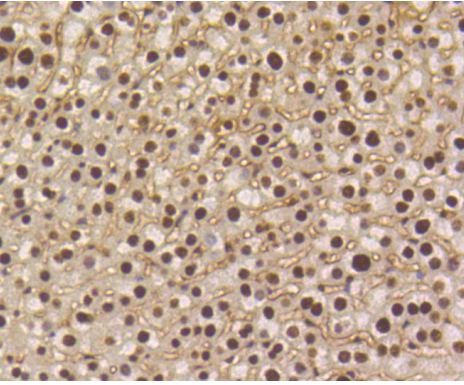
Western blot analysis of Phospho-Smad5(S463/465) on different lysates using anti-Phospho-Smad5(S463/465) antibody at 1/1,000 dilution. Positive control:

Lane 1: Mouse brain

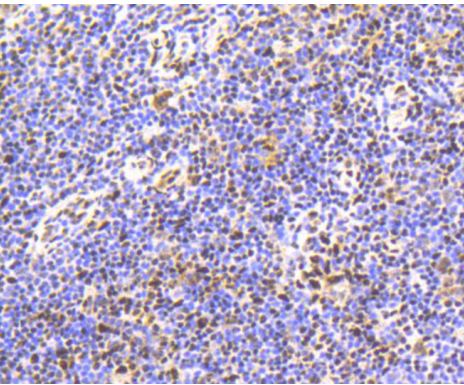
Lane 2: Rat brain



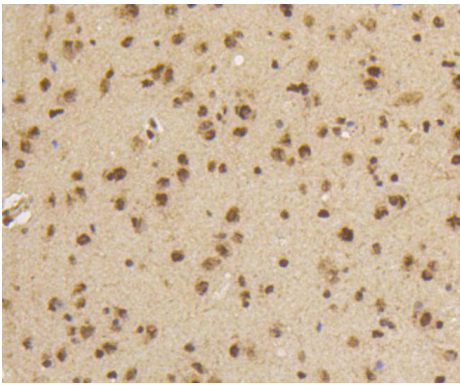
Immunohistochemical analysis of paraffin-embedded human breast carcinoma tissue using anti-Phospho-Smad5(S463/465) antibody. Counter stained with hematoxylin.



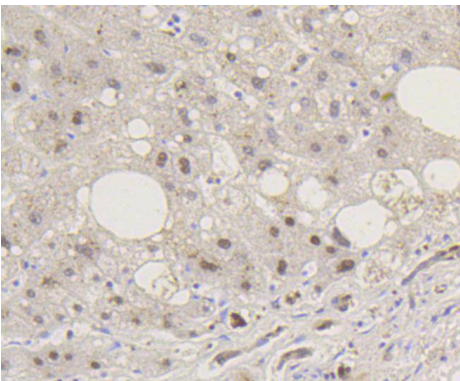
Immunohistochemical analysis of paraffin-embedded mouse liver tissue using anti-Phospho-Smad5(S463/465) antibody. Counter stained with hematoxylin.



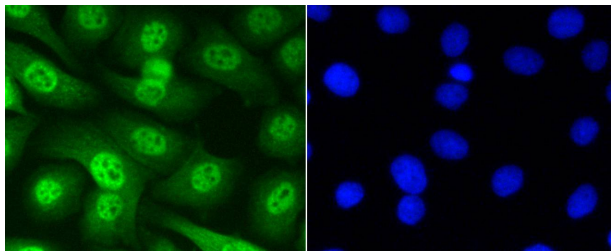
Immunohistochemical analysis of paraffin-embedded human tonsil tissue using anti-Phospho-Smad5(S463/465) antibody. Counter stained with hematoxylin.



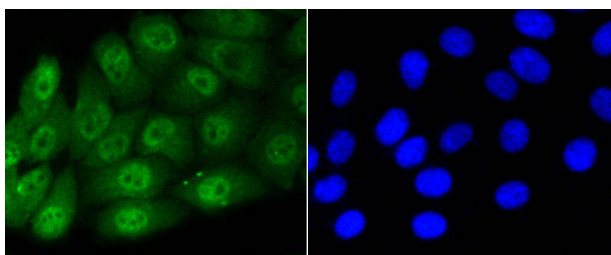
Immunohistochemical analysis of paraffin-embedded mouse brain tissue using anti-Phospho-Smad5(S463/465) antibody. Counter stained with hematoxylin.



Immunohistochemical analysis of paraffin-embedded human liver tissue using anti-Phospho-Smad5(S463/465) antibody. Counter stained with hematoxylin.



ICC staining Phospho-Smad5(S463/465) in SKOV-3 cells (green). The nuclear counter stain is DAPI (blue). Cells were fixed in paraformaldehyde, permeabilised with 0.25% Triton X100/PBS.



ICC staining Phospho-Smad5(S463/465) in HepG2 cells (green). The nuclear counter stain is DAPI (blue). Cells were fixed in paraformaldehyde, permeabilised with 0.25% Triton X100/PBS.

## Background

Smad proteins, the mammalian homologs of the *Drosophila* Mothers against dpp (Mad) have been implicated as downstream effectors of TGF $\beta$ /BMP signaling. Smad1 (also designated Madr1 or JV4-1), Smad5 and mammalian Smad8 (also designated Smad9 or MADH6) are effectors of BMP2 and BMP4 function while Smad2 (also designated Madr2 or JV18-1) and Smad3 are involved in TGF $\beta$  and activin-mediated growth modulation. Smad4 (also designated DPC4) has been shown to mediate all of the above activities through interaction with various Smad family members. Smad6 and Smad7 regulate the response to activin/TGF $\beta$  signaling by interfering with TGF $\beta$ -mediated phosphorylation of other Smad family members.

## References

Note: This product is for in vitro research use only