

PI 3 Kinase catalytic subunit alpha Rabbit mAb

Catalog No: #48751



Package Size: #48751-1 50ul #48751-2 100ul

Orders: order@signalwayantibody.com

Support: tech@signalwayantibody.com

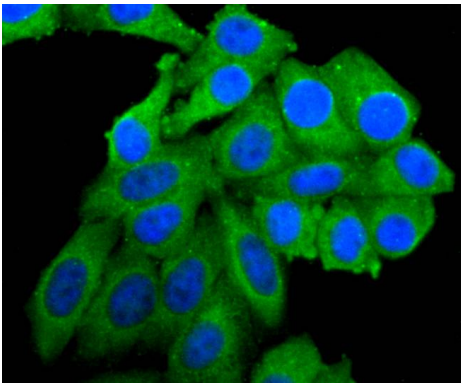
Description

Product Name	PI 3 Kinase catalytic subunit alpha Rabbit mAb
Host Species	Recombinant Rabbit
Clonality	Monoclonal antibody
Clone No.	SJ0186
Purification	ProA affinity purified
Applications	WB, ICC/IF, IP
Species Reactivity	Hu, Ms
Immunogen Description	recombinant protein
Other Names	5-bisphosphate 3-kinase 110 kDa catalytic subunit alpha antibody 5-bisphosphate 3-kinase catalytic subunit alpha isoform antibody caPI3K antibody CLOVE antibody CWS5 antibody MCAP antibody MCM antibody MCMTC antibody MGC142161 antibody MGC142163 antibody p110 alpha antibody p110alpha antibody Phosphatidylinositol 3 kinase catalytic alpha polypeptide antibody Phosphatidylinositol 3 kinase catalytic 110 KD alpha antibody Phosphatidylinositol 4 5 bisphosphate 3 kinase catalytic subunit alpha antibody Phosphatidylinositol 4 5 bisphosphate 3 kinase catalytic subunit alpha isoform antibody Phosphatidylinositol 4,5 bisphosphate 3 kinase 110 kDa catalytic subunit alpha antibody Phosphatidylinositol-4 antibody Phosphoinositide 3 kinase catalytic alpha polypeptide antibody PI3 kinase p110 subunit alpha antibody PI3-kinase subunit alpha antibody PI3K antibody PI3K-alpha antibody PI3KC A antibody PIK3C A antibody Pik3ca antibody PK3CA antibody PK3CA_HUMAN antibody PtdIns 3 kinase p110 antibody PtdIns-3-kinase subunit alpha antibody PtdIns-3-kinase subunit p110-alpha antibody Serine/threonine protein kinase PIK3CA antibody
Accession No.	Swiss-Prot#:P42336
Uniprot	P42336
GeneID	5290;
Calculated MW	124 kDa
Formulation	1*TBS (pH7.4), 1%BSA, 40%Glycerol. Preservative: 0.05% Sodium Azide.
Storage	Store at -20°C

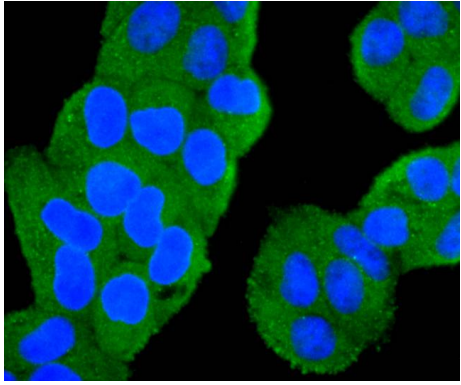
Application Details

WB: 1:500-1:1000 ICC: 1:50-1:200

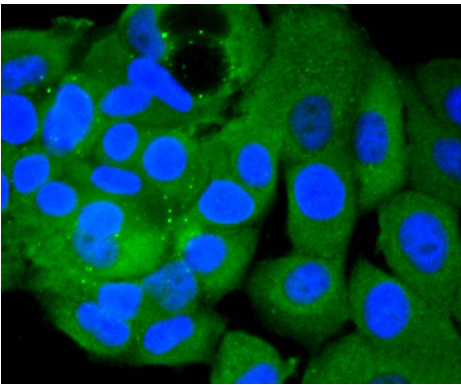
Images



ICC staining PI 3 kinase p110 alpha in HepG2 cells (green). The nuclear counter stain is DAPI (blue). Cells were fixed in paraformaldehyde, permeabilised with 0.25% Triton X100/PBS.



ICC staining PI 3 kinase p110 alpha in HeLa cells (green). The nuclear counter stain is DAPI (blue). Cells were fixed in paraformaldehyde, permeabilised with 0.25% Triton X100/PBS.



ICC staining PI 3 kinase p110 alpha in MCF-7 cells (green). The nuclear counter stain is DAPI (blue). Cells were fixed in paraformaldehyde, permeabilised with 0.25% Triton X100/PBS.

Background

Phosphatidylinositol 3-kinase (PI 3-kinase) is composed of p85 and p110 subunits. p85 lacks PI 3-kinase activity and acts as an adapter, coupling p110 to activated protein tyrosine kinase. Two forms of p85 have been described (p85 α and p85 β), each possessing one SH3 and two SH2 domains. Various p110 isoforms have been identified. p110 α and p110 β interact with p85 α , and p110 α has also been shown to interact with p85 β in vitro. p110 δ expression is restricted to white blood cells. It has been shown to bind p85 α and β , but it apparently does not phosphorylate these subunits. p110 δ seems to have the capacity to autophosphorylate. p110 γ does not interact with the p85 subunits. It has been shown to be activated by α and $\beta\gamma$ heterotrimeric G proteins.

References

Note: This product is for in vitro research use only