

## Notch 1 Rabbit mAb

Catalog No: #48766

Package Size: #48766-1 50ul #48766-2 100ul

Orders: order@signalwayantibody.com

Support: tech@signalwayantibody.com

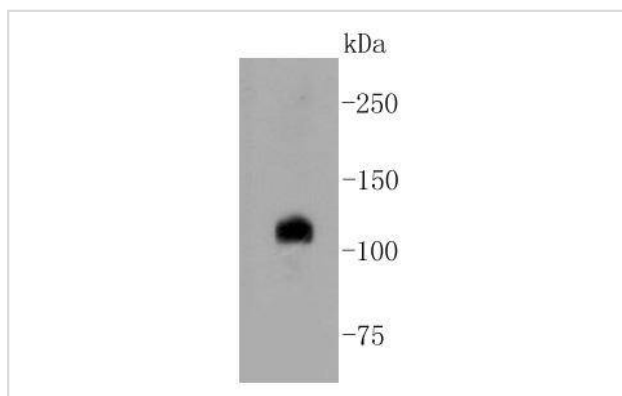
## Description

Product Name	Notch 1 Rabbit mAb
Host Species	Recombinant Rabbit
Clonality	Monoclonal antibody
Clone No.	SJ205
Purification	ProA affinity purified
Applications	WB, ICC/IF, IHC, IP, FC
Species Reactivity	Hu, Ms
Immunogen Description	recombinant protein
Other Names	9930111A19Rik antibody AOS5 antibody AOVD1 antibody hN1 antibody Lin-12 antibody LIN12 antibody Mis6 antibody Motch A antibody mT14 antibody Neurogenic locus notch homolog protein 1 antibody Neurogenic locus notch protein homolog antibody NICD antibody NOTC1_HUMAN antibody Notch 1 antibody Notch 1 intracellular domain antibody NOTCH antibody Notch gene homolog 1 (Drosophila) antibody Notch homolog 1, translocation-associated (Drosophila) antibody NOTCH, Drosophila, homolog of, 1 antibody notch1 antibody TAN1 antibody Translocation associated notch homolog antibody Translocation associated notch protein TAN 1 antibody Translocation-associated notch protein TAN-1 antibody xotch antibody
Accession No.	Swiss-Prot#:P46531
Uniprot	P46531
GeneID	4851;
Calculated MW	125 kDa
Formulation	1*TBS (pH7.4), 1%BSA, 40%Glycerol. Preservative: 0.05% Sodium Azide.
Storage	Store at -20°C

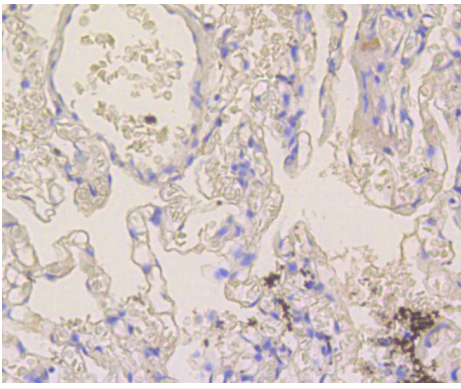
## Application Details

WB: 1:1,000-1:2,000 IHC: 1:50-1:200 ICC: 1:50-1:200FC: 1:50-1:100

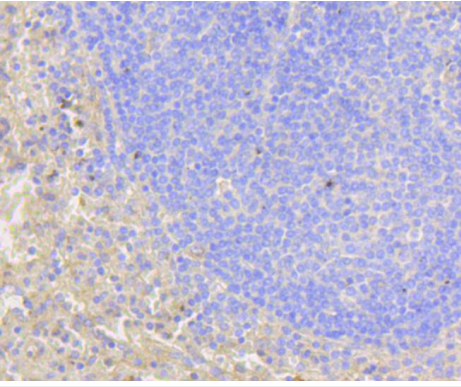
## Images



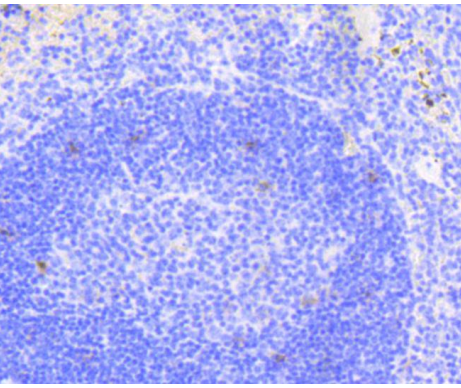
Western blot analysis of Notch 1 on HepG2 cell lysates using anti-Notch 1 antibody at 1/1,000 dilution.



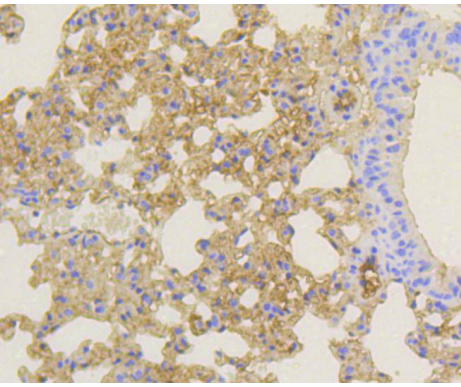
Immunohistochemical analysis of paraffin-embedded human lung tissue using anti-Notch 1 antibody. Counter stained with hematoxylin.



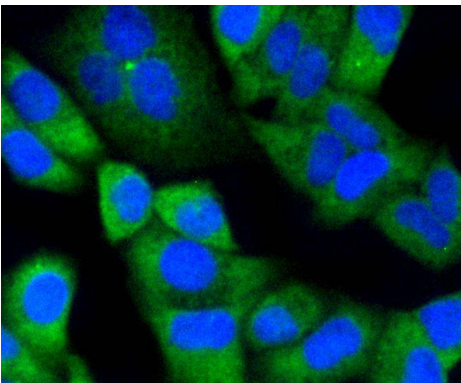
Immunohistochemical analysis of paraffin-embedded human spleen tissue using anti-Notch 1 antibody. Counter stained with hematoxylin.



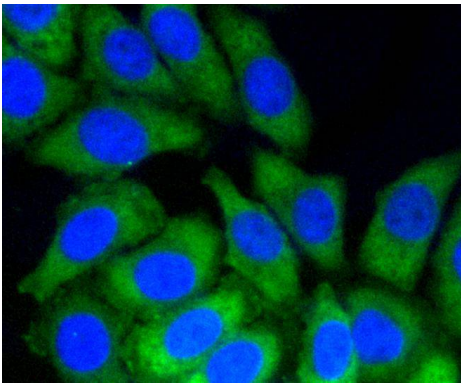
Immunohistochemical analysis of paraffin-embedded mouse spleen tissue using anti-Notch 1 antibody. Counter stained with hematoxylin.



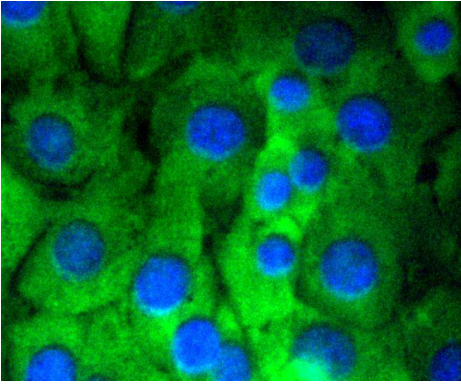
Immunohistochemical analysis of paraffin-embedded mouse lung tissue using anti-Notch 1 antibody. Counter stained with hematoxylin.



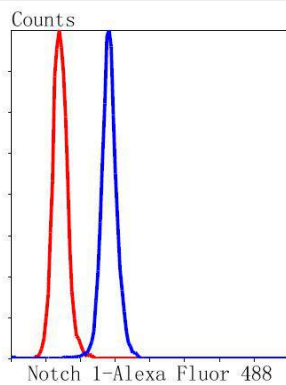
ICC staining Notch 1 in HeLa cells (green). The nuclear counter stain is DAPI (blue). Cells were fixed in paraformaldehyde, permeabilised with 0.25% Triton X100/PBS.



ICC staining Notch 1 in HepG2 cells (green). The nuclear counter stain is DAPI (blue). Cells were fixed in paraformaldehyde, permeabilised with 0.25% Triton X100/PBS.



ICC staining Notch 1 in NIH/3T3 cells (green). The nuclear counter stain is DAPI (blue). Cells were fixed in paraformaldehyde, permeabilised with 0.25% Triton X100/PBS.



Flow cytometric analysis of HeLa cells with Notch 1 antibody at 1/50 dilution (blue) compared with an unlabelled control (cells without incubation with primary antibody; red). Alexa Fluor 488-conjugated goat anti rabbit IgG was used as the secondary antibody.

## Background

The LIN-12/notch family of transmembrane receptors is believed to play a central role in development by regulating cell fate decisions. To date, four notch homologs have been identified in mammals and have been designated Notch 1, Notch 2, Notch 3 and Notch 4. The notch genes are expressed in a variety of tissues in both the embryonic and adult organism, suggesting that the genes are involved in multiple signaling pathways. The notch proteins have been found to be overexpressed or rearranged in human tumors. Ligands for notch include Jagged1, Jagged2 and Delta. Jagged can activate notch and prevent myoblast differentiation by inhibiting the expression of muscle regulatory and structural genes. Jagged2 is thought to be involved in the development of various tissues whose development is dependent upon epithelial-mesenchymal interactions. Normal Delta expression is restricted to the adrenal gland and placenta. Delta expression has also been found in neuroendocrine tumors such as neuroblastomas and pheochromocytomas.

## References

Note: This product is for in vitro research use only