

TERT Polyclonal Antibody

Catalog No: #41486

Package Size: #41486-1 50ul #41486-2 100ul

Orders: order@signalwayantibody.comSupport: tech@signalwayantibody.com

Description

Product Name	TERT Polyclonal Antibody
Host Species	Rabbit
Clonality	Polyclonal
Purification	The antibody was affinity-purified from rabbit antiserum by affinity-chromatography using epitope-specific immunogen.
Applications	WB IF ELISA
Species Reactivity	Hu
Specificity	TERT Polyclonal Antibody detects endogenous levels of TERT protein.
Immunogen Type	peptide
Immunogen Description	Synthesized peptide derived from human TERT around the non-phosphorylation site of S227.
Target Name	TERT
Other Names	TERT; EST2; TCS1; TRT; Telomerase reverse transcriptase; HEST2; Telomerase catalytic subunit; Telomerase-associated protein 2; TP2
Accession No.	Swiss-Prot: O14746NCBI Gene ID: 7015
Uniprot	O14746
GeneID	7015;
SDS-PAGE MW	170kd
Concentration	1mg/ml
Formulation	Liquid in PBS containing 50% glycerol, 0.5% BSA and 0.02% sodium azide.
Storage	Store at -20°C/1 year

Application Details

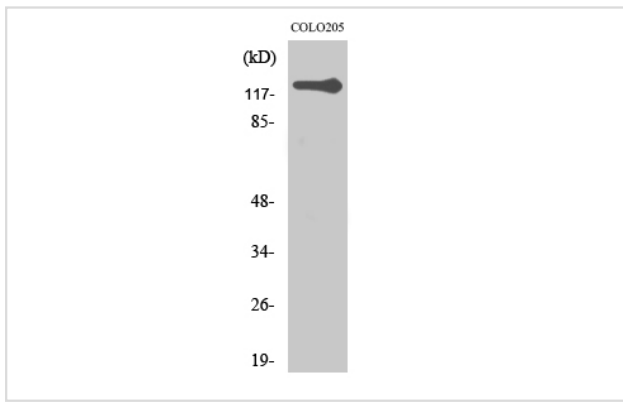
Western Blot: 1/500 - 1/2000.

Immunofluorescence: 1/200 - 1/1000.

ELISA: 1/5000.

Not yet tested in other applications.

Images



Western Blot analysis of COLO205 cells using TERT Polyclonal Antibody

Note: This product is for in vitro research use only